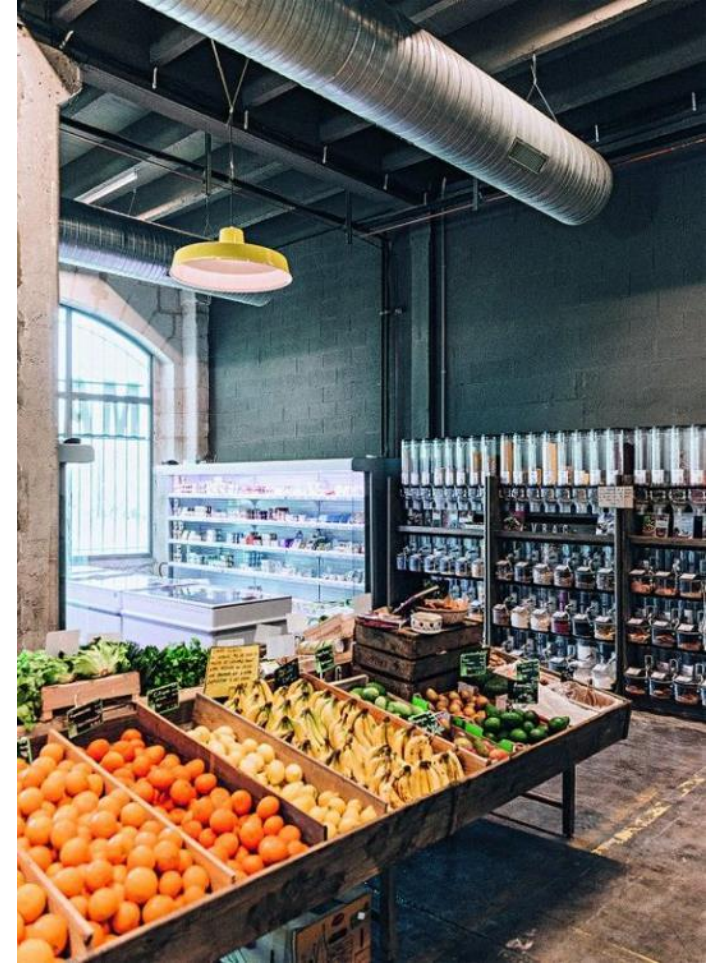


Looking forward to a productive urban landscape

Andreas Kipar, LAND



Where does our food come from?



Industrialization changed our relation to food production and its territory

Living nature & productive landscape



“Landscape is a modeled shape
that evolves by living”

J.W. Goethe

Gartenreich Dessau-Wörlitz: a productive cultural landscape

We forgot the countryside



Milan's Southern periphery: city vs countryside



Rem Koolhaas sees the future in the countryside

It is time to learn from the radical change happening beyond the world's cities, suggests Rem Koolhaas, architect and co-founder of OMA

© The Economist, 2018

TASTING THE LANDSCAPE

tasting the
TORINO CANDIDATE CITY

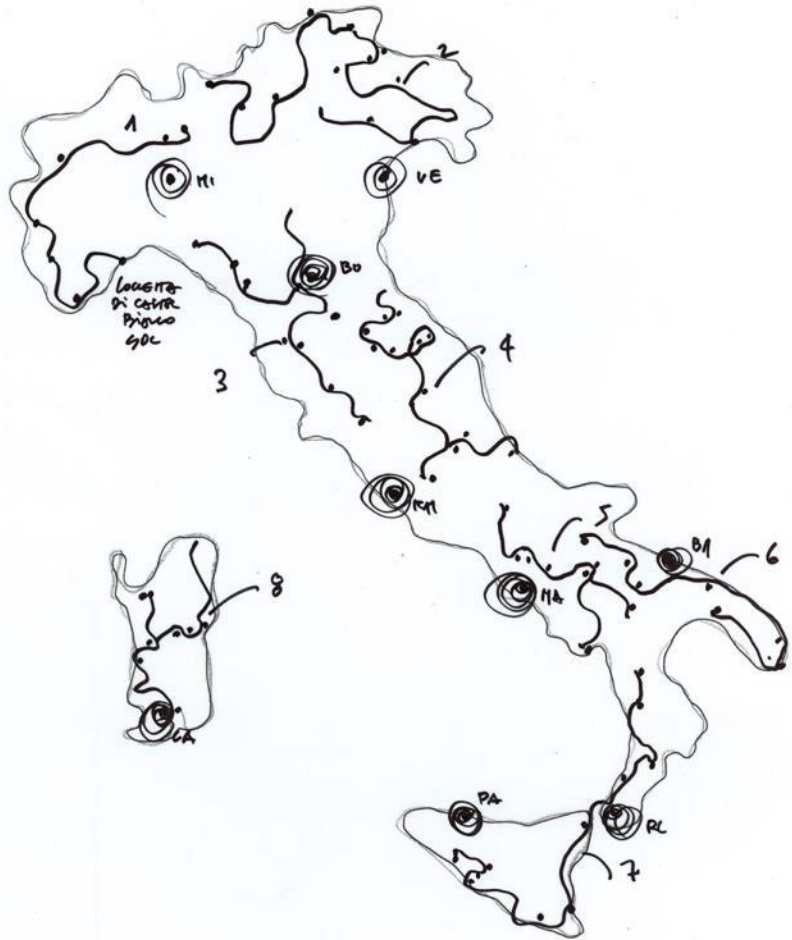
LANDSCAPE

2016 IFLA 53RD WORLD CONGRESS



TORINO 2016

Today's contrast: Metropolis vs Inland



2018 Biennale: Italian Pavilion dedicated to inland areas

Urban agriculture: social need or emergency solution?



Rooftop garden in Torino

Is UA an effective answer for our future cities?



Is UA proportionate to humanity nutritional needs?

Urban gardening mainly responds to our desire to reconnect to nature

LAND



An ancient symbiotic relation



“Effetti del buon governo in città e in campagna”
Ambrogio Lorenzetti - Siena, 1338-1339

City and agriculture have a strong relation in the history of European cities: they provided a mutual exchange of products, resources and ideas.

LAND

Milan: an agricultural metropolis



Milan historical plan 1629 (Pierre Mortier)



Gardens around Navigli (1870)

An innate acquaintance



Urban agriculture as emergency solutions: wheat fields in Duomo square during WWII

Dealing with urban density



Regain the relation with urban borders



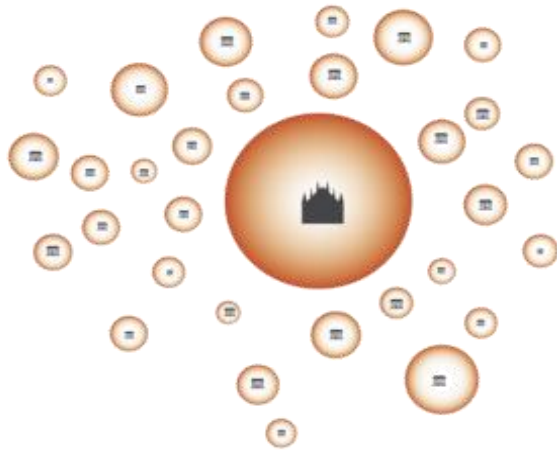
Periurban agriculture

LAND



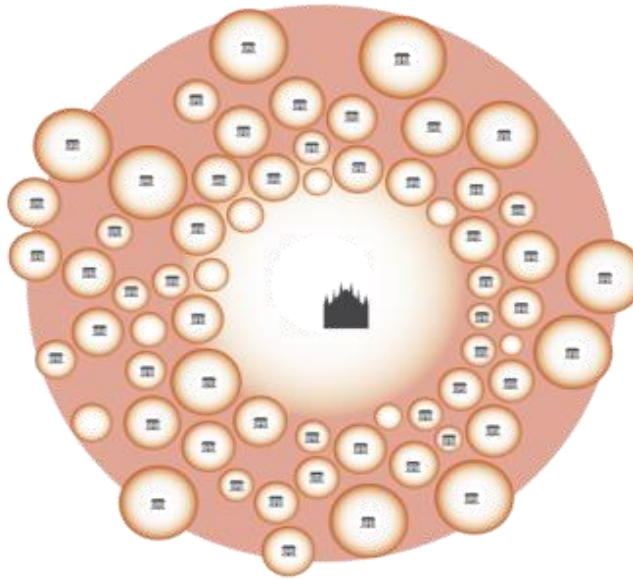
Open space in evolution

1900



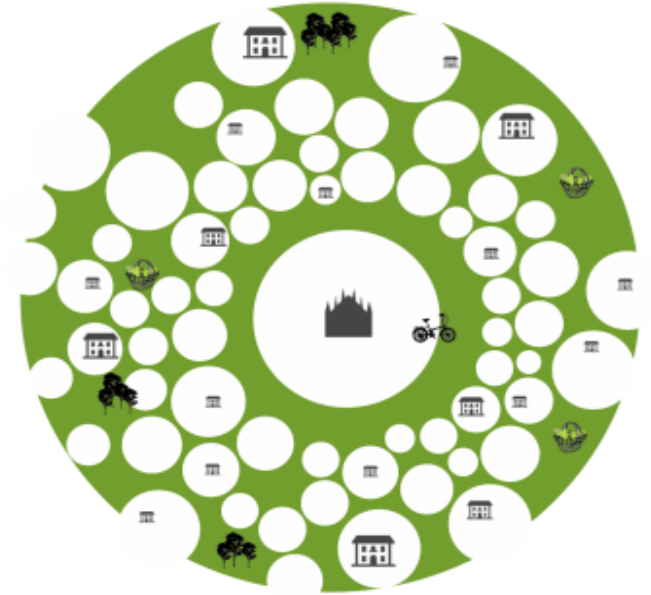
La città e i borghi

OGGI



‘i resti dello spazio aperto’
metropolizzazione del territorio.

2020...IL DOMANI?...



...**DARE** nuova identità
agli spazi aperti...



We need a territorial vision

Cooperation




**Regional
development strategies**

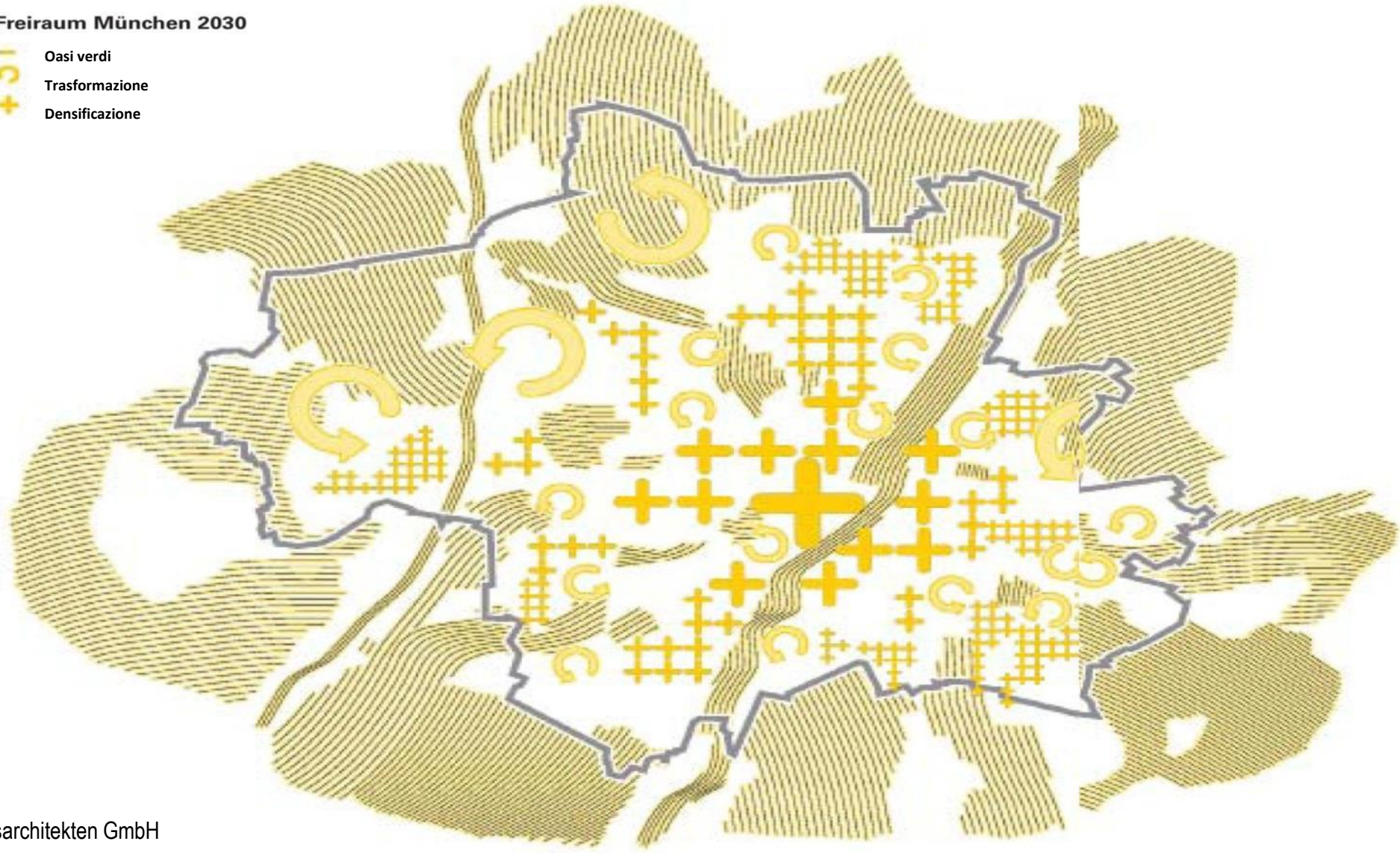
**Integration of different
stakeholders and disciplines**

Cross-border structures

Munich 2030

Freiraum München 2030

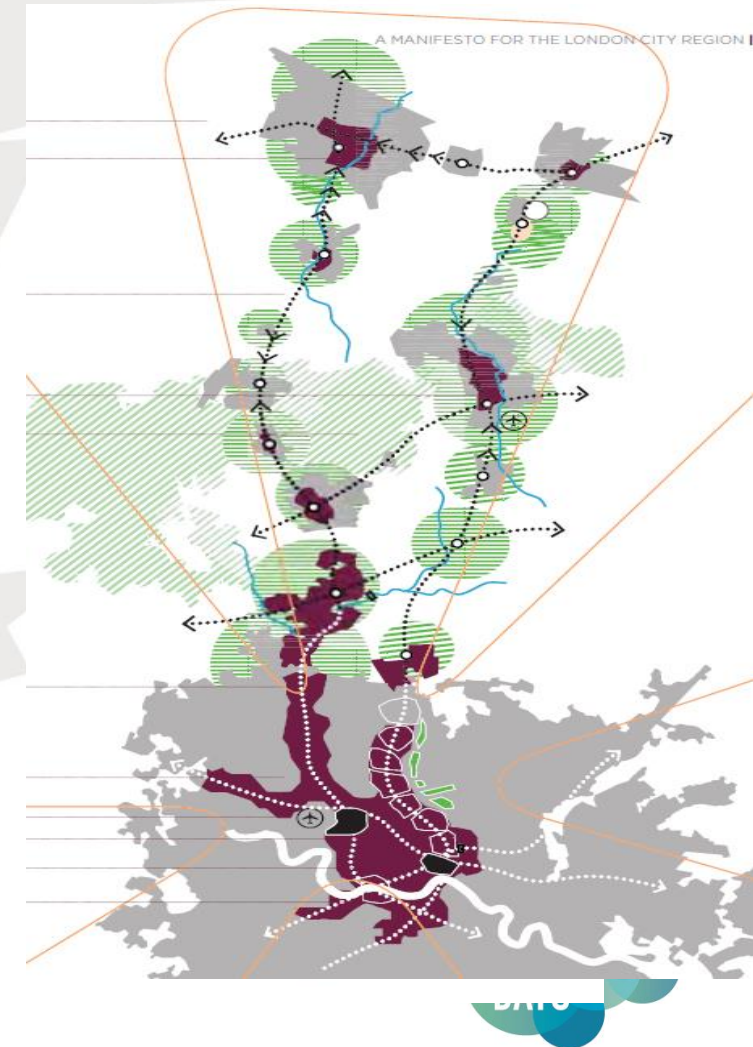
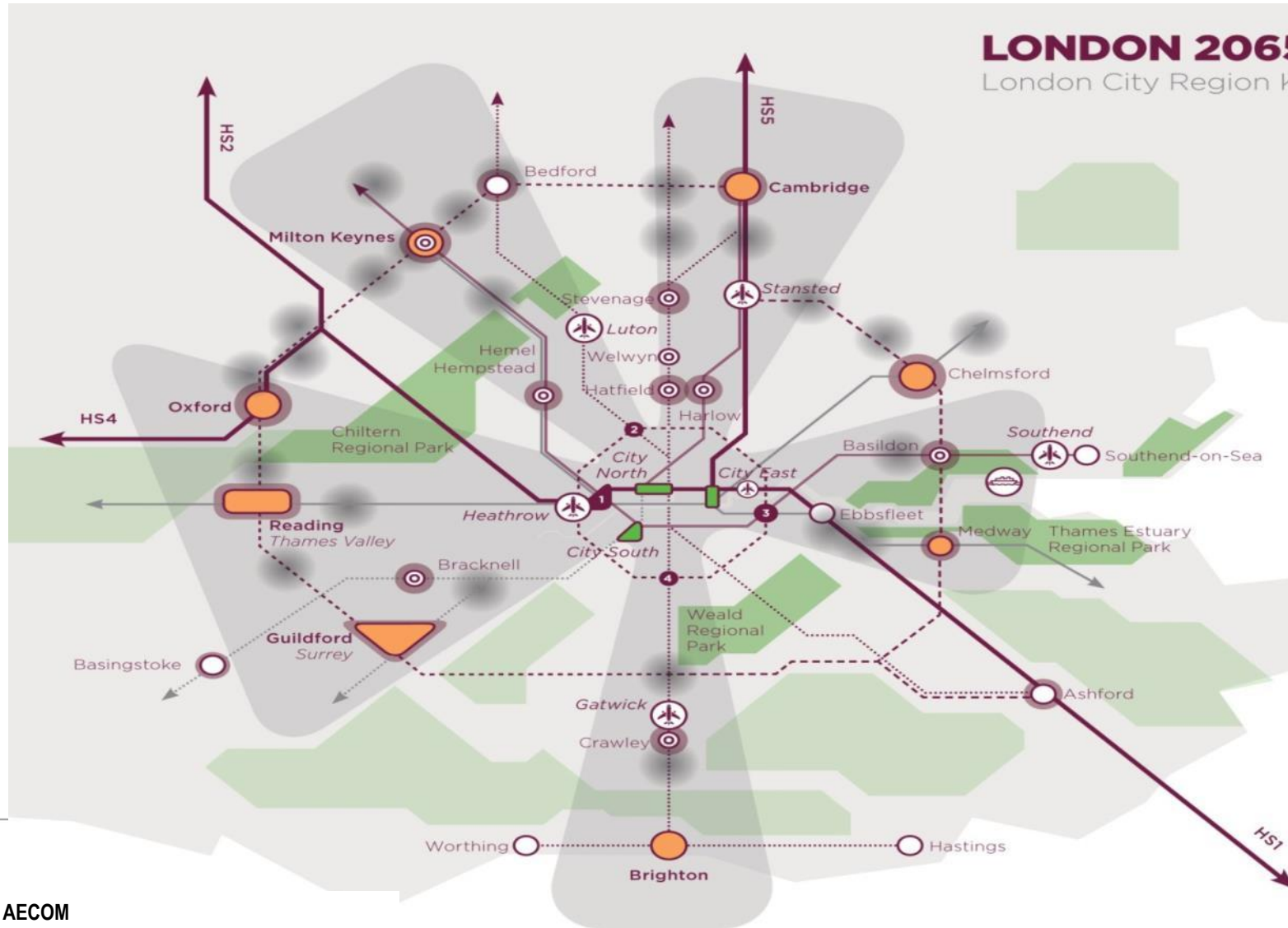
-  Oasi verdi
-  Trasformazione
-  Densificazione



London 2065

LONDON 2065

London City Region Key diagram

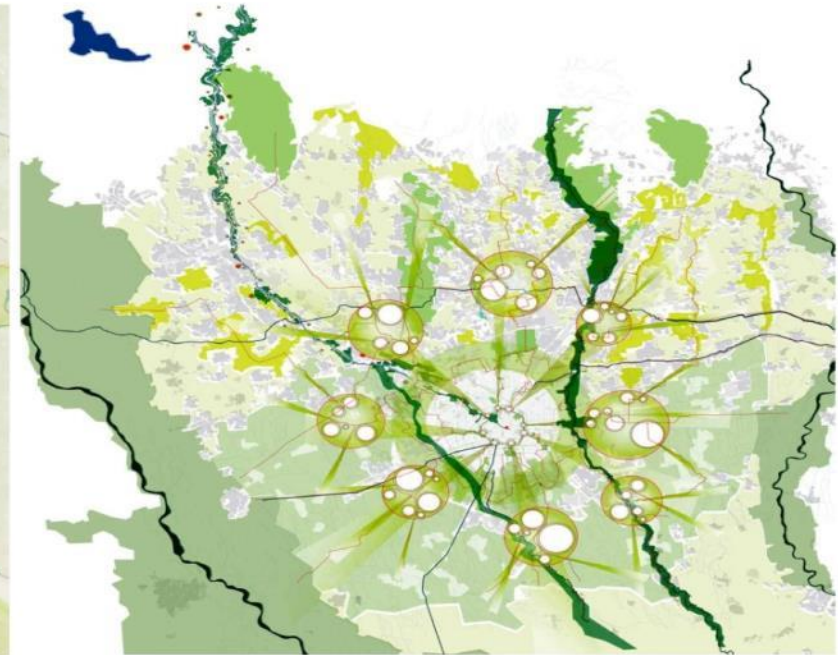
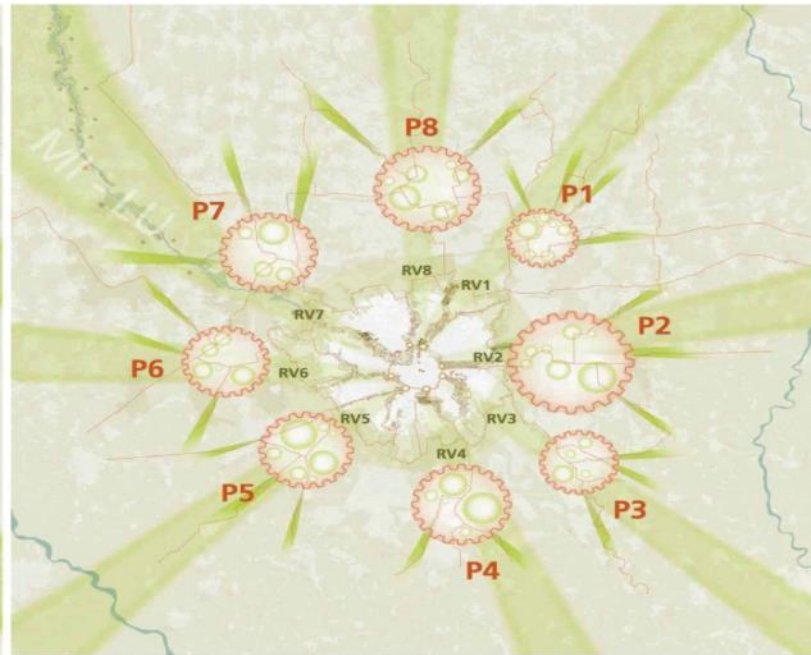
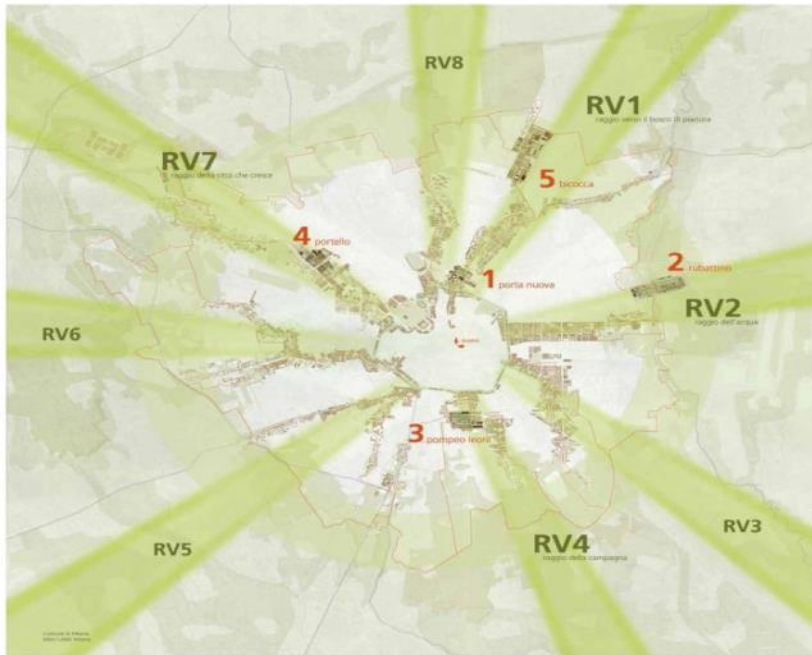


© AECOM

LAND

Urban agriculture as multi-service infrastructure

Green Infrastructure a new strategy for European Green Cities



We need Urban Agri-CULTURE!

Open spaces planning is a cultural approach
working at different scales:

Neighbourhood

-

Urban

-

Territorial

Urban Agriculture as place-making



Garden of Faith, Christian protestant Church of Milan

Learning from Rotterdam



DakAkker Schieblock, 1,000 sqm

Learning from Chicago



Gary Comer Youth Center, 750 sqm

Learning from Torino



Orto Alto, 150 sqm

We need Urban Agri-CULTURE!



Bike ride on the LET (Landscape Expo Tour) in 2015



MILANO 2015

FEEDING THE PLANET
ENERGY FOR LIFE

Food supply

Quality and availability of
food products

Short&local supply chain

Multi-stakeholder territorial
approach



Wheat field Porta Nuova (2015)



Milan gets RURAL!

LAND



From Expo to MIND



MILANO 2015

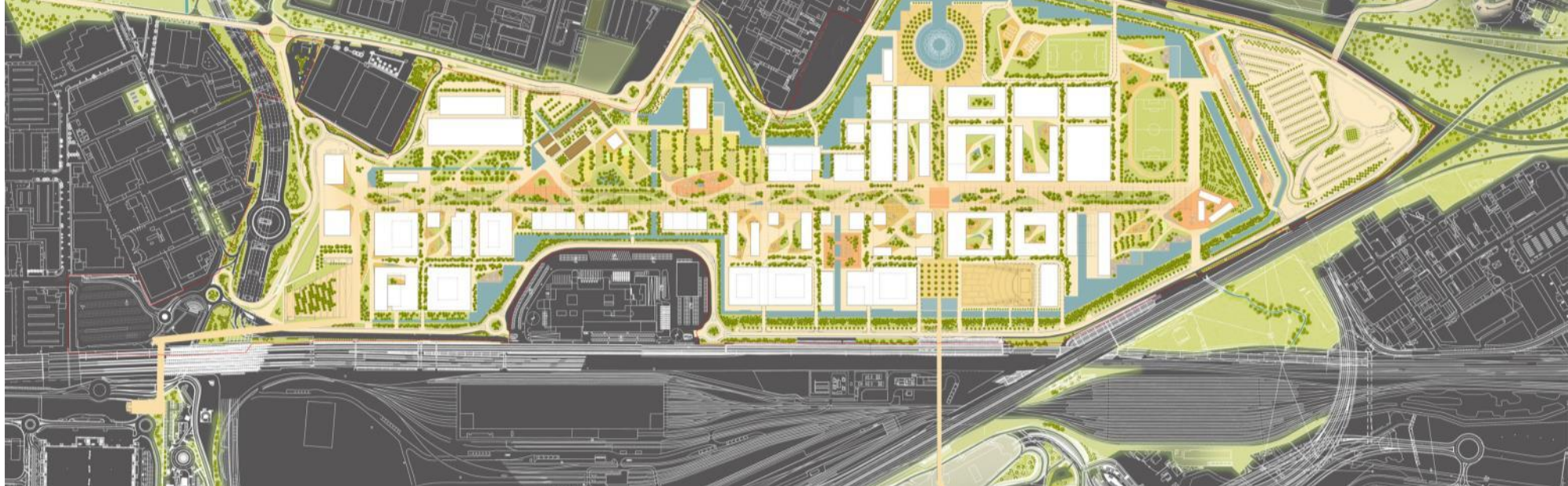
FEEDING THE PLANET
ENERGY FOR LIFE

2015



MILANO INNOVATION DISTRICT

2018



Future productive urban landscapes. Innovation+nature for more liveable cities

LAND



MIND: an innovation lab



Outdoor
farming decks

+



Indoor
aquaponic&hydroponic

+



Indoor
vertical garden

=



Food processing



Food distribution

Climate change, land consumption and resource shortages for farming and nutrition
boost the research on food sciences and human health

LAND



Towards new possibilities: the Sky Farm



Rogers
Stirk
Harbour
+ Partners

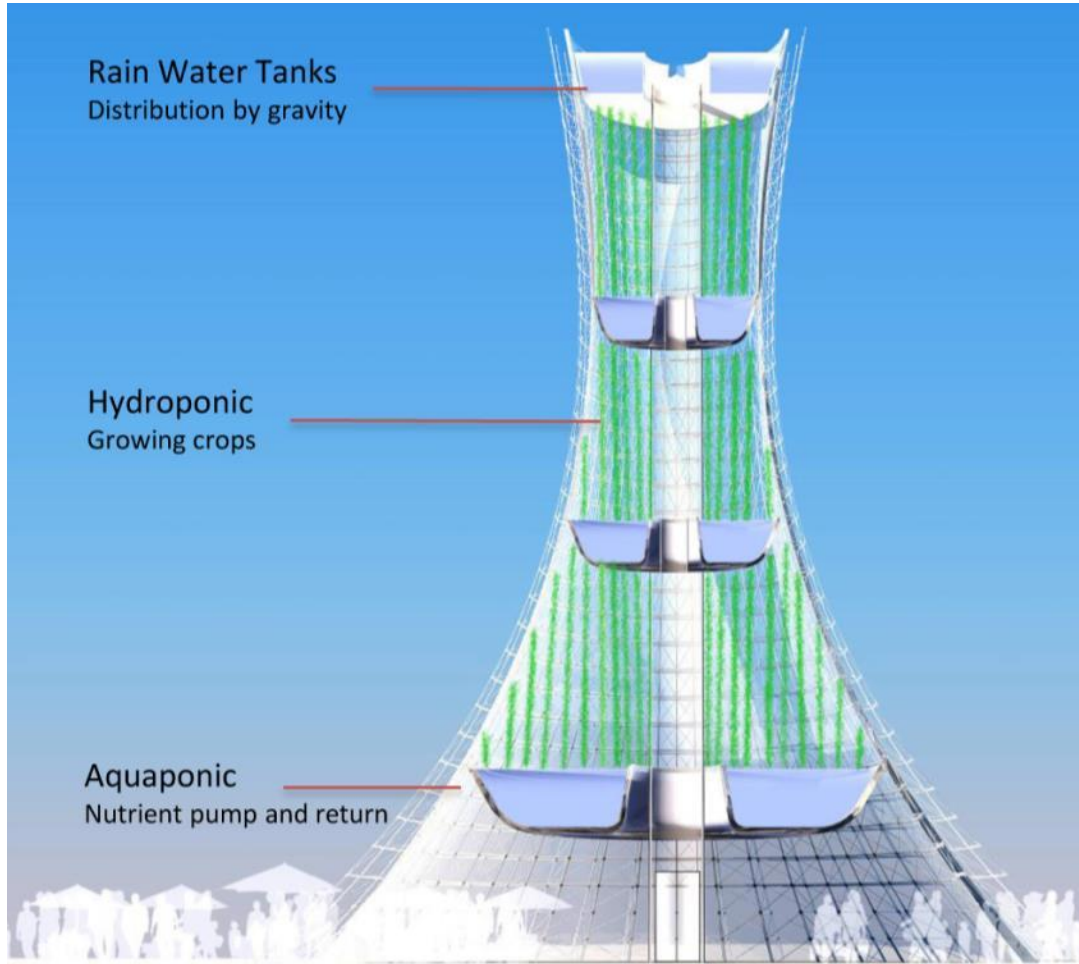
ARUP

RECONSILIA

LAND



3 fundamentals for life



Richard Rogers says there are three fundamentals to life:

1. Architecture

2. Food

3. Social Interaction

The Project deals with these three fundamentals. SkyFarm will redress this trend by creating a space that engages with the food-chain, creates a community hub, whilst, at the same time, promoting environmental awareness

Credits:

Rogers
Stirk
Harbour
+ Partners

ARUP

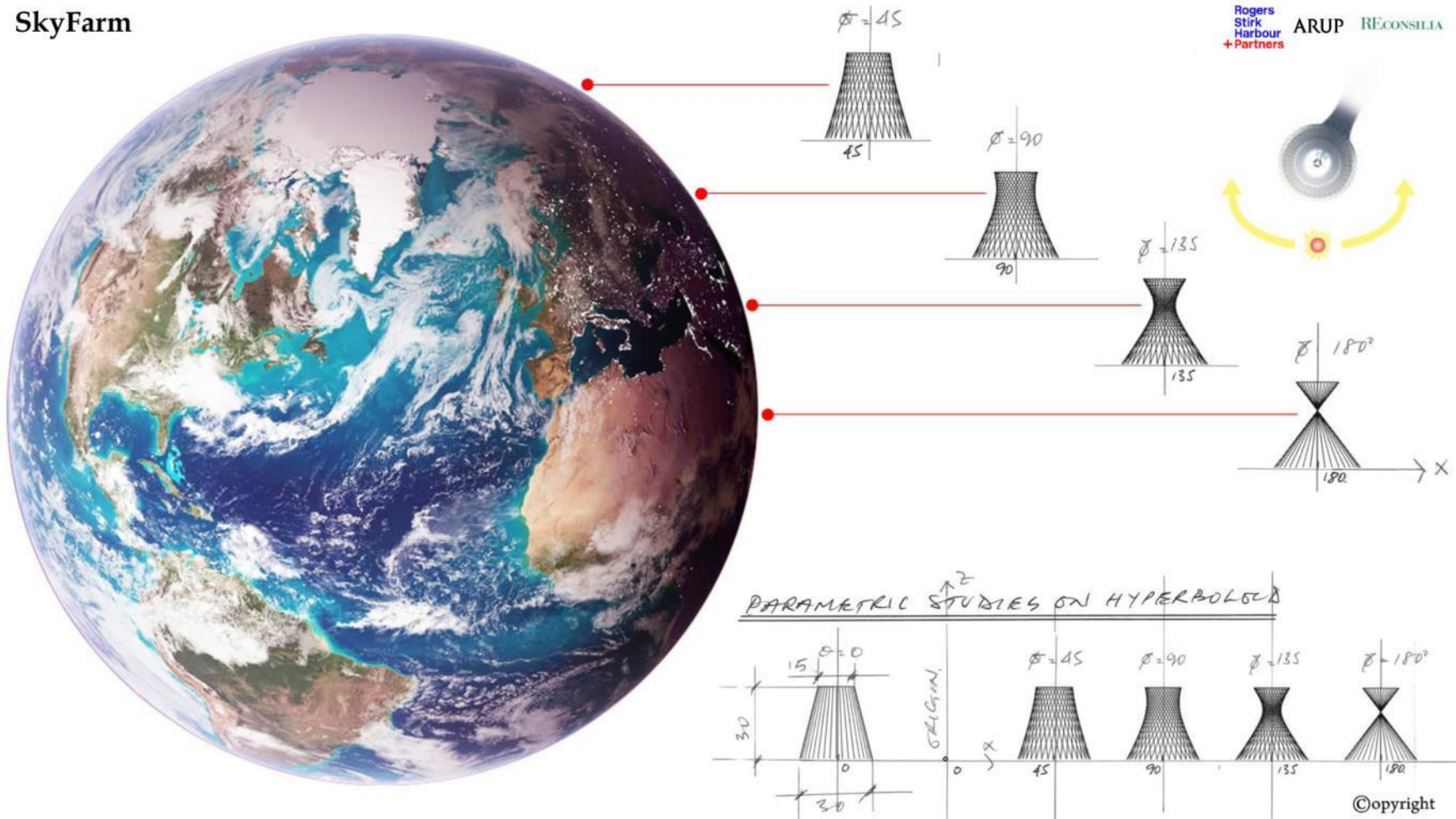
RECONSILIA

LAND



An adaptive technology

SkyFarm



Credits:

Rogers
Stirk
Harbour
+ Partners

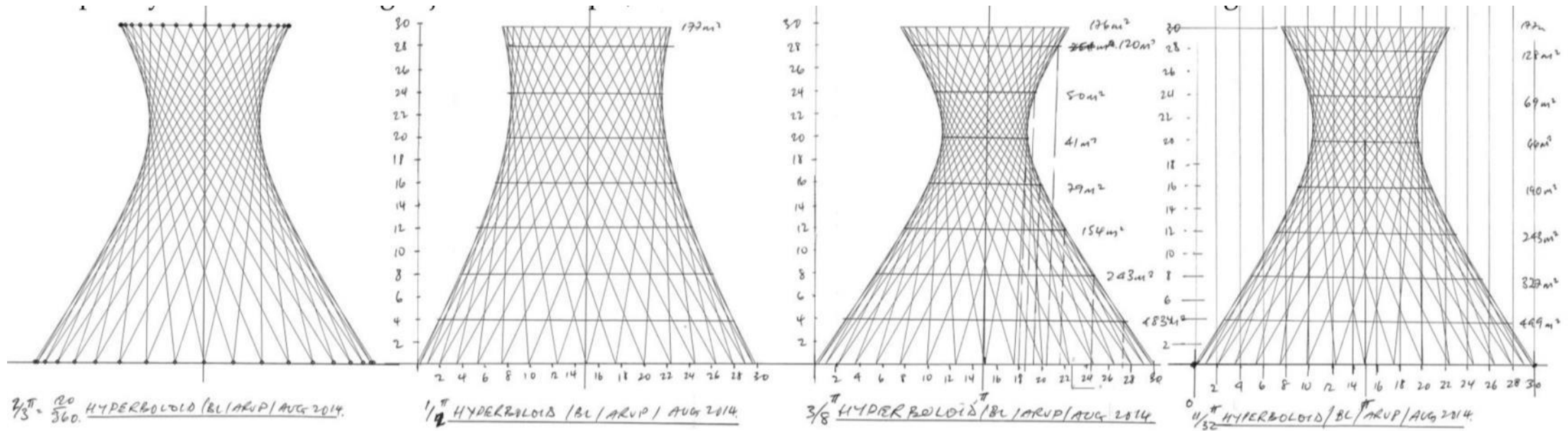
ARUP

RECONSILIA

LAND



Not only architecture: it is AGRITECTURE



©copyright

Credits:

Rogers
Stirk
Harbour
+ Partners

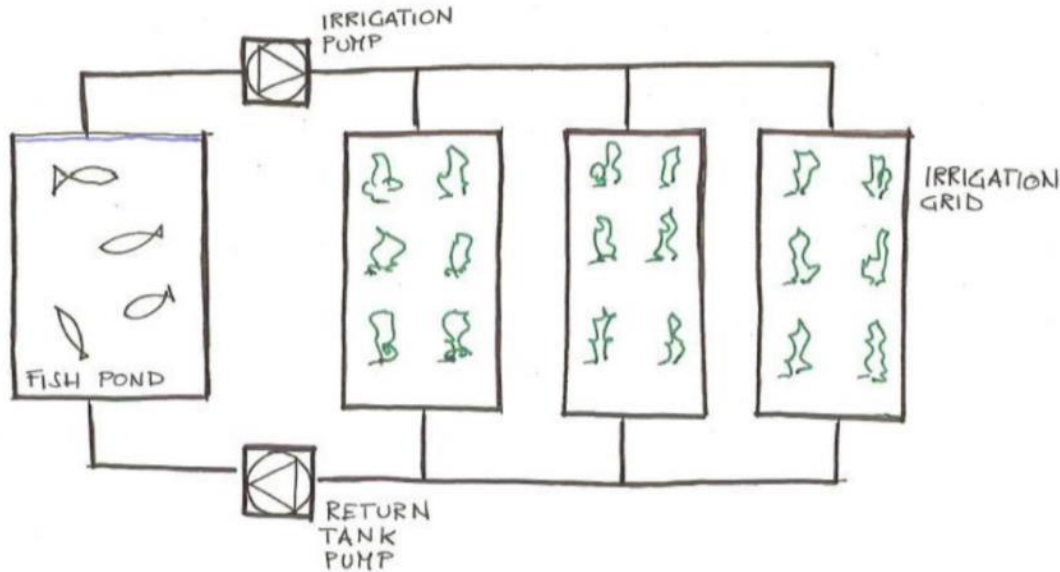
ARUP

RECONSILIA

LAND



Exploring new technologies



A key component of **SkyFarm** is Aquaponics, an integrated system supporting fish farming and hydroponic plant cultivation in a closed loop system. *"So the fish feed the plants and the plants feed the fish"*. Creating a sustainable ecosystem where plants and fish feed themselves reciprocally and both thrive.

Credits:

Rogers
Stirk
Harbour
+ Partners

ARUP

RECONSILIA

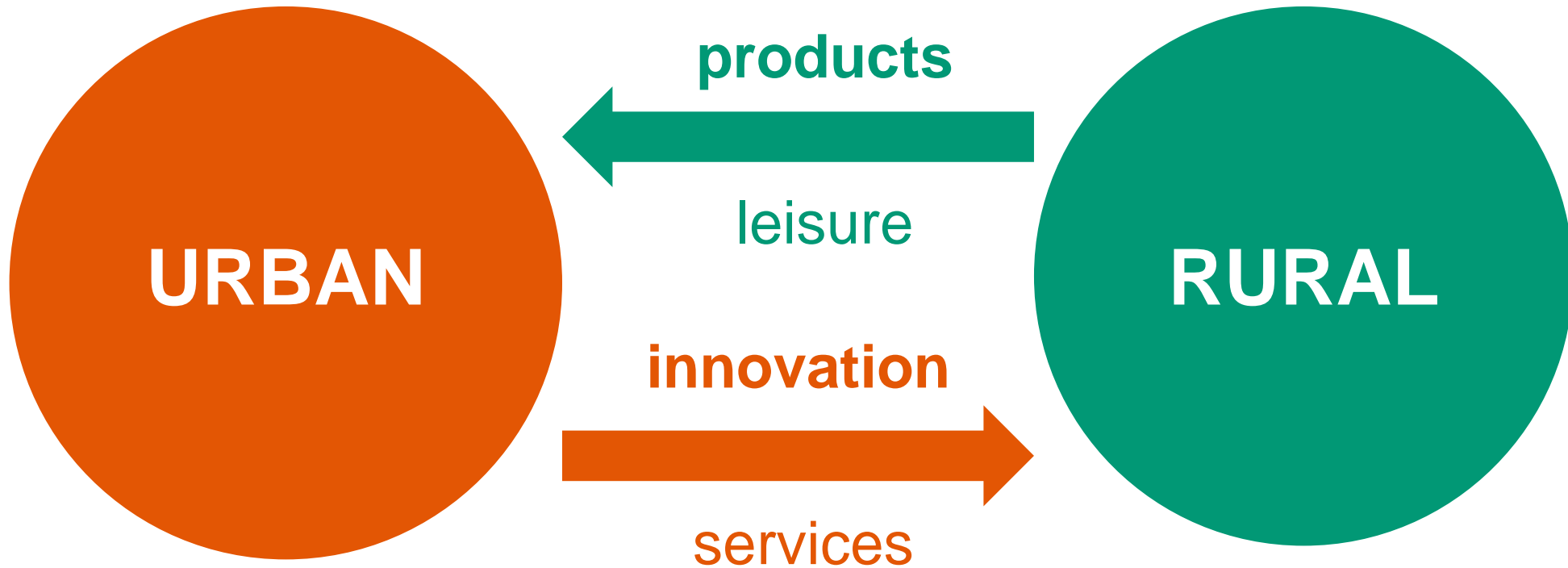
LAND





In some environments SkyFarm will require LED lighting and heating to maximize output.

Urban Renaissance to export



Italy is first country in EU for agricultural enterprises run by under 35.
70% of them deals with innovative agricultural activities.

Rural is innovation



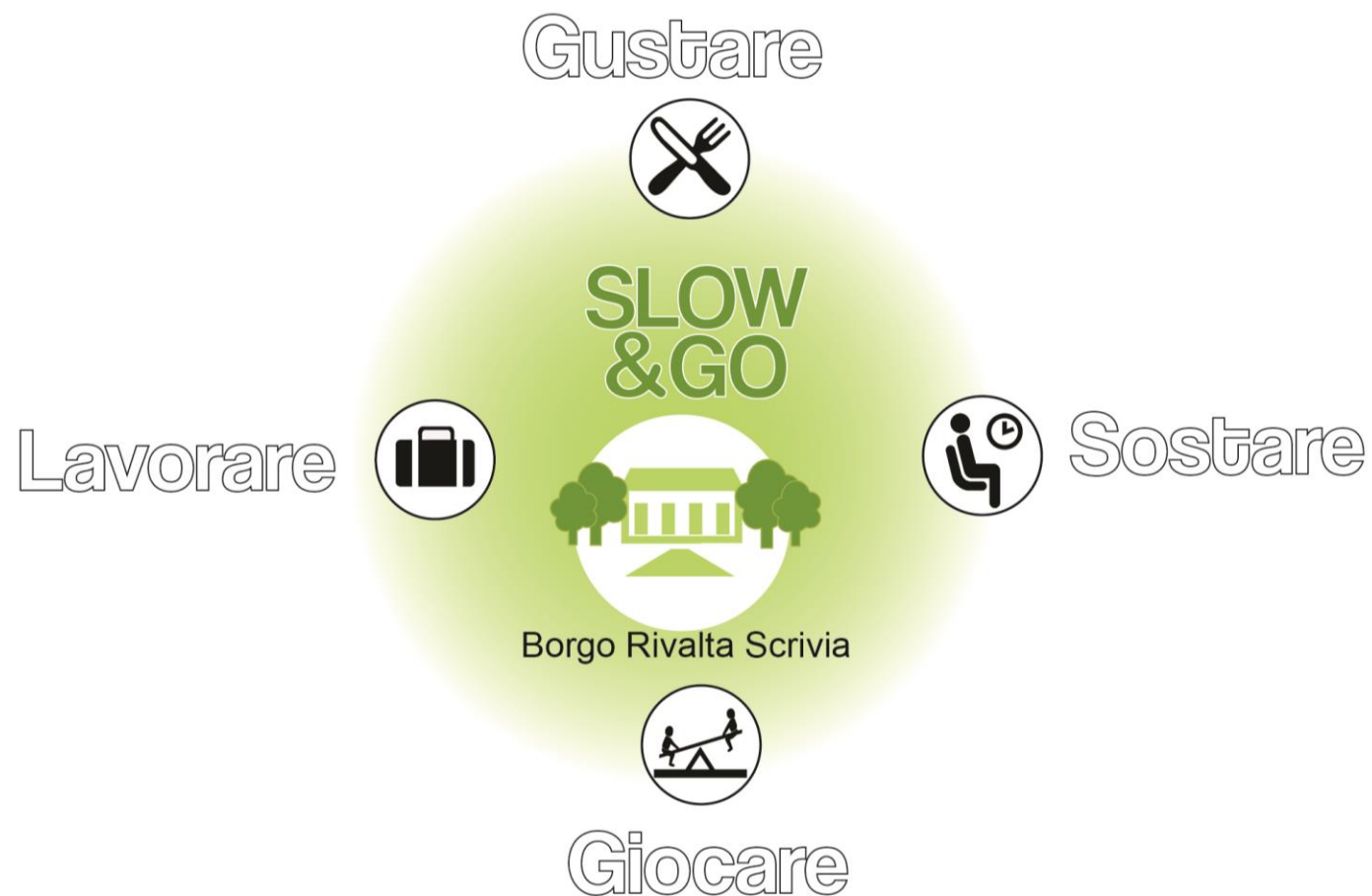
Agriculture 4.0 in Italy has a market share of 100 millions € (2.5% of world market!)

Source: Osservatorio Smart AgriFood

LAND



Multifunctional agriculture is the new frontier



© LAND

Slow&Go: an innovative multifunctional approach

Copyright: LAND

LAND

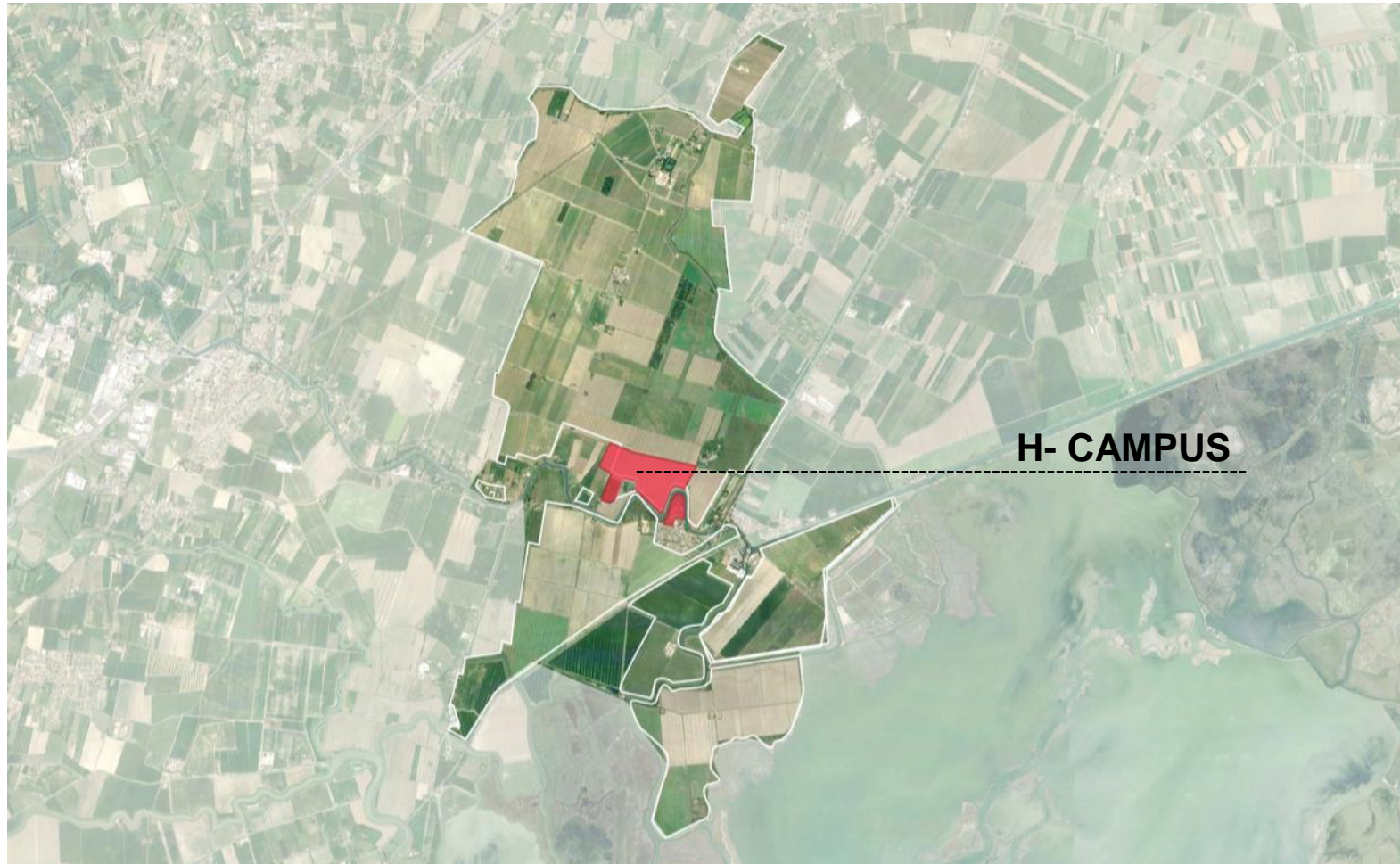


Towards multifunctional agriculture



Export CULTURE to productive landscapes

Ca' Tron



Ca' Corniani



Photo: Agostino Osio

Produttività



Photo: Francesco Galifi

Biodiversità



Photo: Francesco Galifi

Arte

QUESTE LUCI VIBBERANNO QUANDO IN ITALIA
UN FULMINE CADRA DURANTE I TEMPORI
QUEST'OPERA E' DEDICATA A CHI PASSANDO DI QUI
PENSA AL CIELO

Fruizione



Photo: Agostino Osio

Our mission

Reconnecting people with Nature

Thank you!