

# WIND TECHNIK NORD

DEVELOPMENT, PRODUCTION AND DISTRIBUTION OF WIND TURBINE GENERATORS SINCE 1986

*YOUR PARTNER FOR WIND ENERGY*



German Energy Solutions  
Energy solutions – made in Germany



Enge-Sande, December 2021  
Dieter Guschewski (CFO)

# CONTENT

- General information about Wind Technik Nord GmbH (WTN)
- Product overview
- Service overview
- Our energy solution
- WTN Impressions
- Search for new business partners



# GENERAL INFORMATION

- Founded in 1986 by Norbert Wippich
- Manufacturer of wind turbine generators in the mid-size range (200-250 kW, 600 kW, 1000 kW, 1500 kW)
- Small-sized company in Northern Germany with international experiences
- Partners in Ireland, England and Turkey

→ **High Quality, Efficiency and Economy**



Tobias Wippich  
CEO (since 2009)



# PRODUCT OVERVIEW



WTN200 (refurbished)



WTN250



WTN500/600



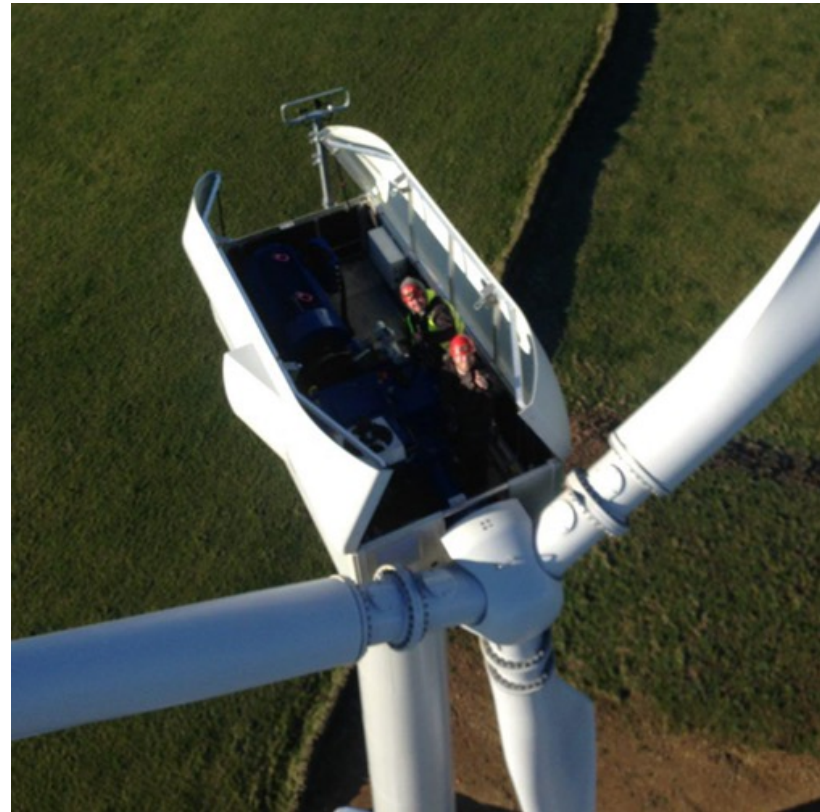
**Wind turbines made in Germany**





# SERVICE OVERVIEW

- Support from the beginning
- Due diligence and Planning advisory
- Production
- Transport
- Installation
- Commissioning
- Service & Maintenance
- SCADA remote monitoring 24/7
- Training of local people (for O&M and more)



# OUR ENERGY SOLUTION

- Why WTN wind turbines ?
  - Long-term experience in wind energy
  - **Reliable** technology with low investment costs
  - **Off-grid solutions**, especially for remote areas / districts
  - Individual power supply for factories incl. storage possibilities
  - Hybrid Solutions available
  - **Easy transport**, all WTN250 components fit into standard 40“ containers
  - Only **small cranes** needed for installation
  - Use the total wind energy potential
  - **Simple, but solid** turbines, easy service and maintenance



# OUR ENERGY SOLUTION

- Aims and results:
  - Availability and Reliability of electrical power supply for your business
  - Local renewable and economical value added
  - Education, Qualification and gain Experience for local people
  - Increase the share of wind energy in the national electricity generation mix
  - Upgrade old turbines with climbing support



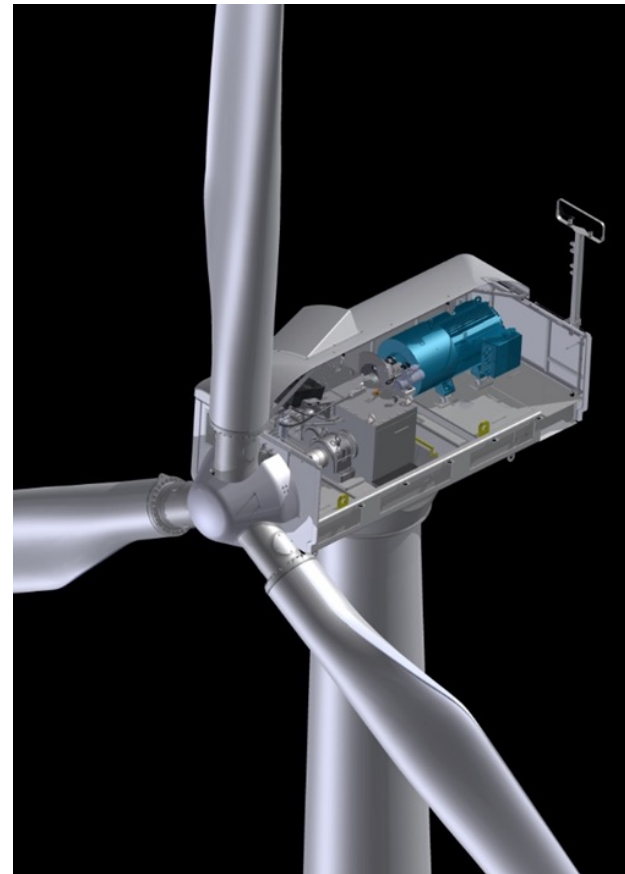
Wind Technik Nord



# OUR ENERGY SOLUTION – WTN250

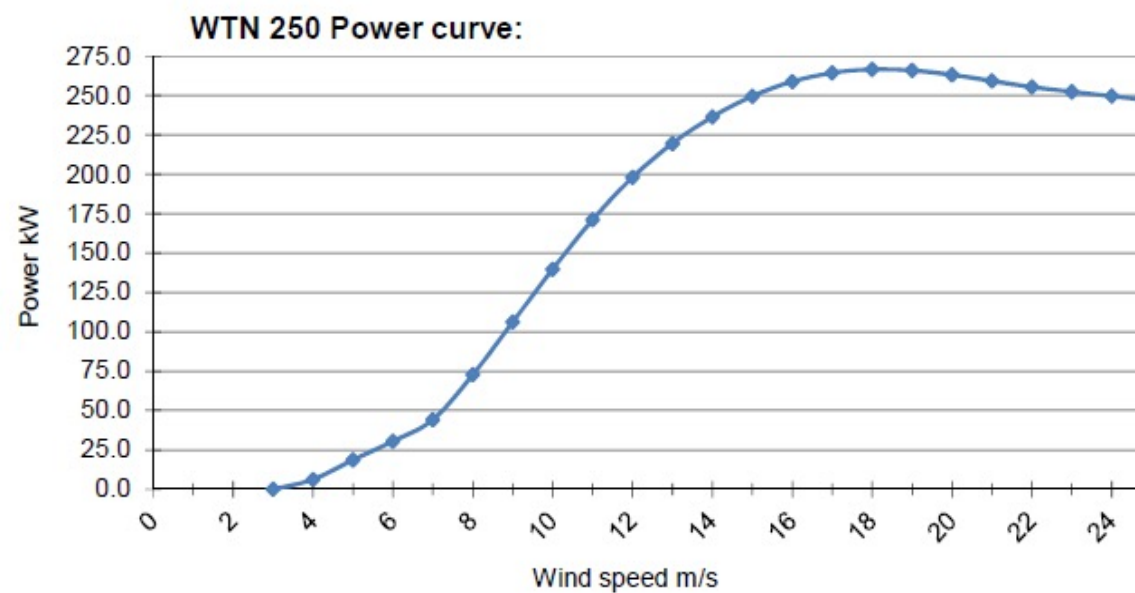
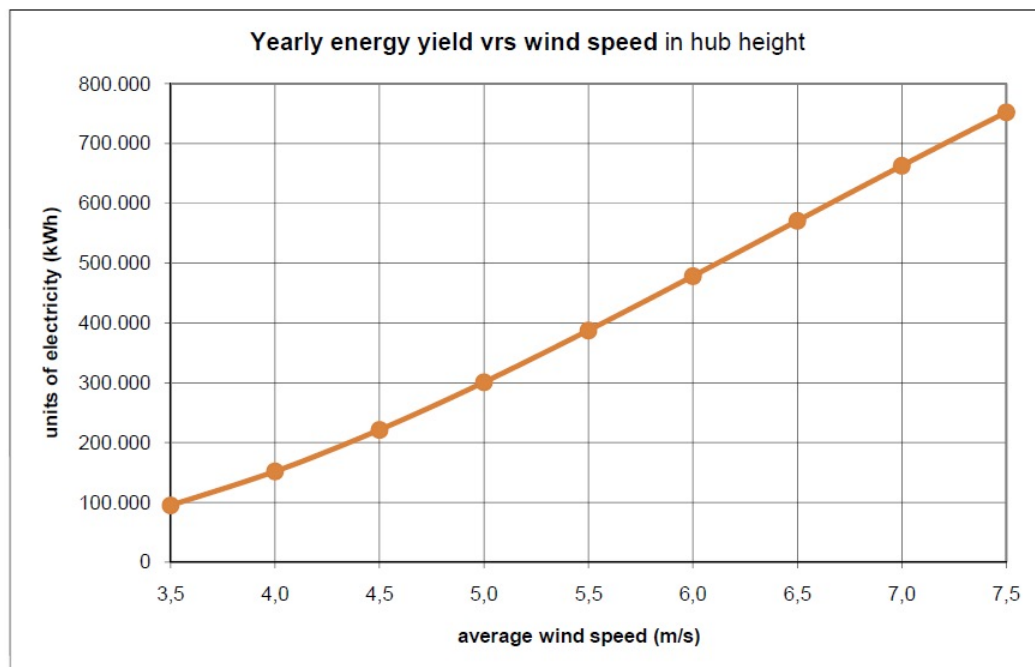
- WTN250 turbine:
  - Nominal output: 250kW
  - Hub height: 30, 40, 46 or 50m
  - Rotor diameter: 29 or 30m
  - Blades type: WTN 13.4
  - Gear type: helical spur gear
  - Yaw system (kind): active
  - Generator output: 50 / 250kW
  - Aerodynamic brakes: Tip brakes
  - Towers: tubular, edged or lattice

→ A simple, but solid turbine for at least 20 years  
→ Easy installation, just one crane day

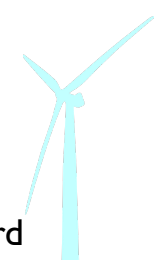


# WTN250

- delivery time is 4-5 months



Yearly energy yield can vary dependent on actual site conditions.





# WTN IMPRESSIONS





## WTN IMPRESSIONS 2





# SEARCH FOR NEW BUSINESS PARTNERS

## **WTN is looking for:**

- Distributors
- Reliable partners with country-specific and technical know-how
- Licensees and Joint Venture partners (local production)
- Other forms of cooperation and partnerships
- Achieving brand awareness

We are open for proposals 😊



# THANKS FOR YOUR ATTENTION! QUESTIONS?

Wind Technik Nord GmbH  
Enger Straße 13  
25917 Enge-Sande  
Germany

Office: +49 4662 698000  
info@windtechniknord.de  
www.windtechniknord.de



## Get in touch with us!

