



BAUER Spezialtiefbau GmbH

Company profile

Dipl. Ing. Kristóf Nagy, MBA

Managing Director

21/06/2022

BAUER History



The BAUER Group, based in the town of Schrobenhausen in Upper Bavaria, is a business with a long-standing family tradition. The artisan's workshop founded in 1790 has grown into an international construction and machinery manufacturing concern. The company's traditional core competency in specialist foundation engineering has today been expanded to encompass three distinct business segments: Construction, Equipment and Resources. BAUER AG has been a publicly listed corporation since 2006.



*PASSION for
PROGRESS*



CONSTRUCTION



EQUIPMENT



RESOURCES

- Year of foundation: 1990.
- 1990-2012: BRK (**B**auer-**R**eformbau-**K**év Metró) Foundation Engineering Specialist Ltd.
- 2012- BAUER Hungary Foundation Engineering Specialist Ltd.
- BAUER Hungary Foundation Engineering Specialist Ltd. is a subsidiary of the German company BAUER Spezialtiefbau GmbH, a world leader in advanced foundation technology, recognized not only as contractor but also as a manufacturer of geotechnical equipment.

Retaining walls:

- Diaphragm walls (40/45 cm -100/105 cm)
- Cut-off Walls (40/45 cm -100/105 cm)
- Mixed-In-Place (MIP) technology (37 cm and/or 55 cm)
- Pile Wall technology (CFA and Cased; Secant or Continuous Pile Wall)

Deep foundations:

- CFA piles (40 -120 cm)
- Cased piles (88 - 178 cm)
- FDP piles (36, 41, 51, 62 cm)
- Gravel piles
- Ductile piles
- Precast driven piles

Anchoring:

- Temporary and permanent ground anchors (Auger and Single or Double casing; Air-or Water rinsing)

Environmental protection:

- Cut-off Walls (40/45 cm -100/105 cm)
- DSM and Mixed-In-Place (MIP) technology (d: 100-200 cm , v:37 cm and/or 55 cm)

Rig Fleet



D-Wall Rigs:

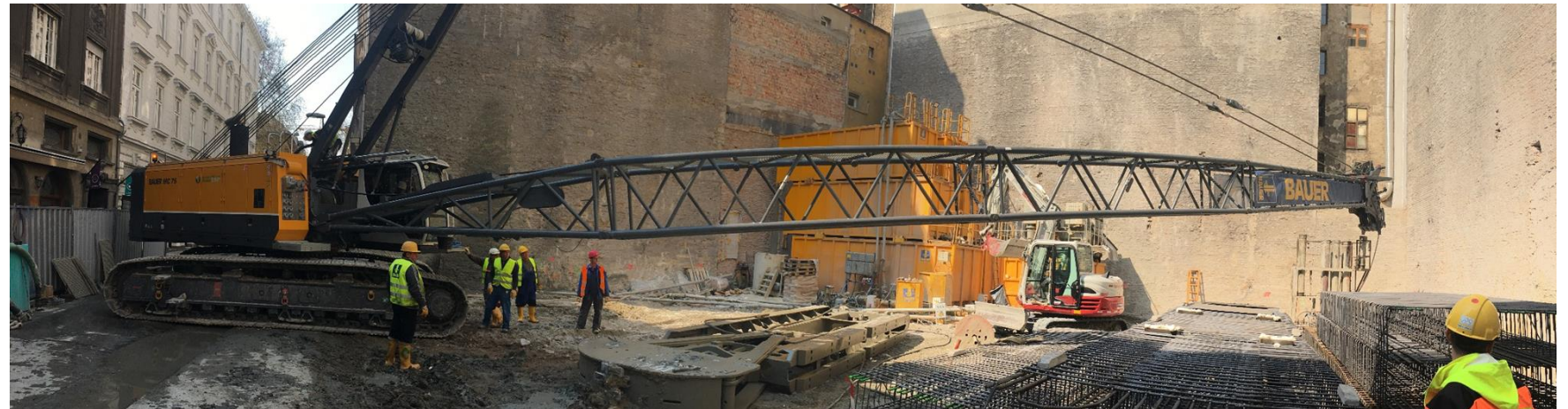
- BAUER MC 76 (2 pcs)
- Liebherr 855
- Liebherr 843
- Liebherr 841

Anchor Drilling Rigs:

- UBW 08
- Klemm 806 (2 pcs)

Drilling Rigs:

- BAUER BG 18 H
- BAUER BG 28 H
- BAUER BG 28
- BAUER BG 30 PL (2 pcs)
- BAUER BG 45 (2 pcs)



Design & Digital Construction

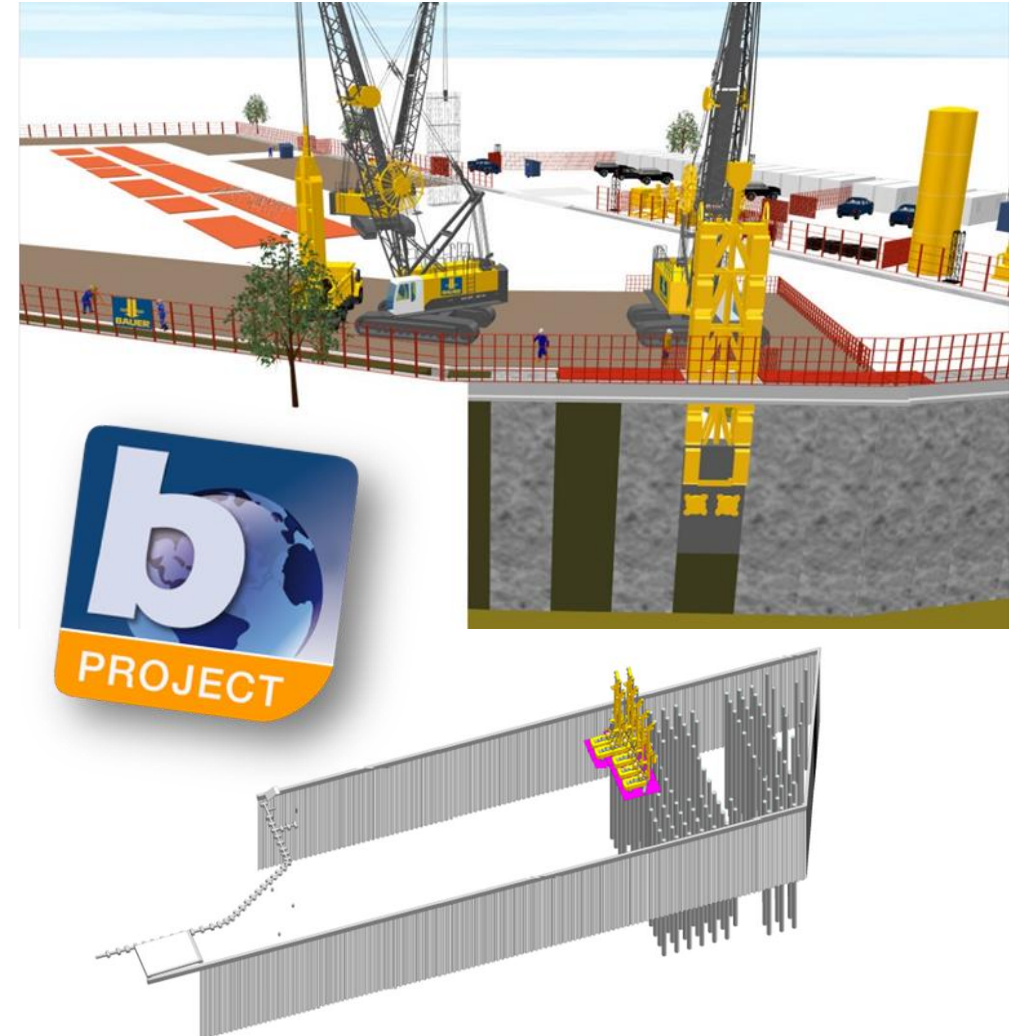
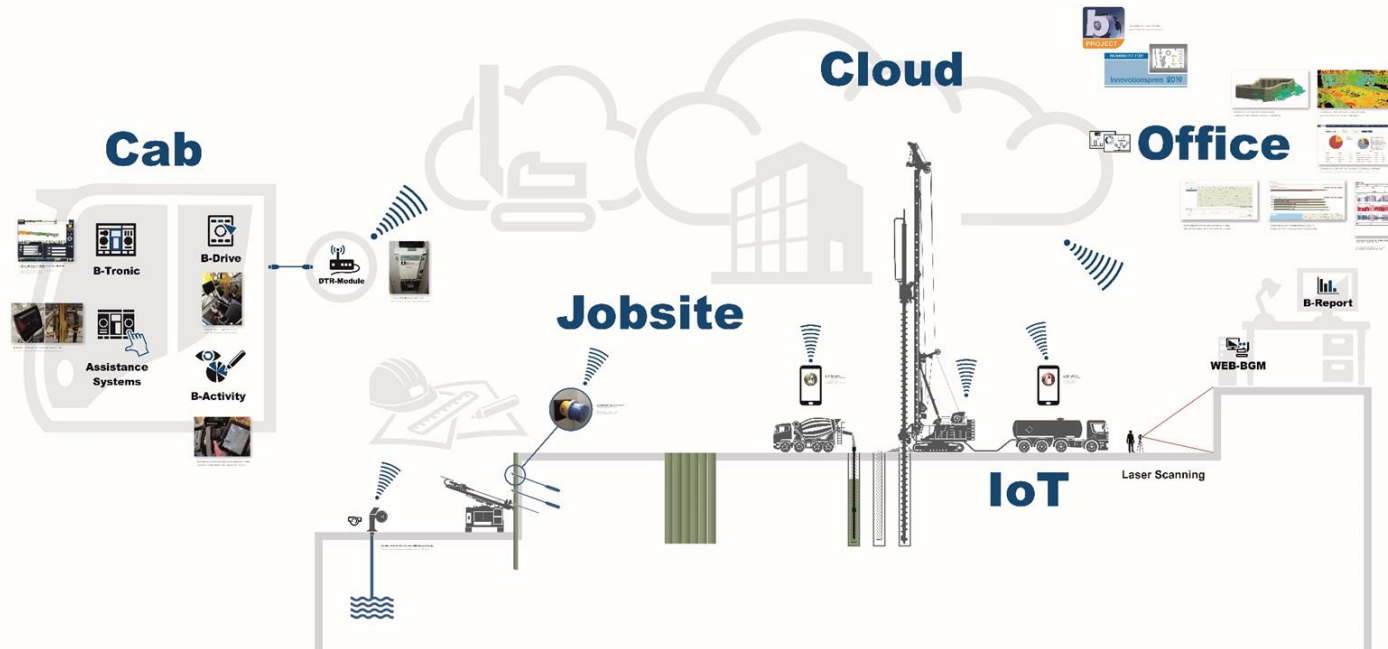


Vizual **S**ite **I**nstaler (own software)

Building Information Modelling (BIM)

b-Project

BAUER» digital



Our company is working according to the following quality management systems:

Since 2006:

- Quality Management System Certification (MSZ EN ISO 9001:2015)
- Environmental Management System (MSZ EN ISO 14001:2015)
- Health and Safety Management System (MSZ 8001:2008; BS OHSAS 18001)

Since 2018:

- SCC – MOL (Safety Certificate for Contractors)
- TBT – Paks II NPP (National Security Authority of Hungary)

Since 2020:

- SAP B1

Retaining walls



The process

Diaphragm Walls

Diaphragm Rigs:

- BAUER MC 76 (2 pcs)
- Liebherr 855
- Liebherr 843
- Liebherr 841

Thickness of the wall:

- 40/45 cm
- 60/65 cm
- 80/85 cm
- 100/105 cm
- **Since 1990 we excavated**
- **more than 350.000 m² COW**



MIP Technology

Soil mixing technologies:

Mixing the soil on site and the applied binder.

Mixed-In-Place (MIP)

The thickness of the wall:

- 37 cm
- 55 cm

Deep Soil Mixing (DSM)

- 100 cm
- 200 cm



CFA piles

Piles drilled with continuous flight auger.

Diameters:

- 400 mm
- 600 mm
- 800 mm
- 900 mm
- 1000 mm
- 1200 mm

- Since 1990 we drilled
- more than 2.100.000 Im Piles



Technical content:

CFA piles:

- CFA 400: 11.444 lm
- CFA 600: 4.805 lm
- CFA 800: 4.113 lm
- CFA 1000: 1.953 lm

- Execution period:
- 2015



Krones

Krones, Debrecen

CFA piles:

- CFA 600: 30.400 lm
- CFA 800: 1.570 lm
- Execution period: 2019





BOSCH Campus

BOSCH Campus, Budapest

CFA Piles:

- CFA 600: 3.000 lm
- CFA 800: 24.000 lm



Iváncsa, SK

Technical content (executed quantities)

CFA piles:

- CFA 600: 20.182 lm
- CFA 800: 34.373 lm
- CFA 600 non- reinforced: 18.928 lm
- Total: **73.483 lm**
- Execution period:
 - June-Aug.2021
 - 6 drilling rigs



We provide for our Clients:

- Bauer as a reliable partner,
- Optimized and Environmental technical solutions based on our design,
- Efficient construction works on site,
- Excellent quality,
- More than 32 years' experience on the local market,



Contact

Office

Budapest 1095 Máriássy utca 7. Déli porta 4. emelet

office@bauer.hu or vallalkozas@bauer.hu

Tel.: +36-1/216-3053

Workshop

Budapest 1095 Soroksári út 95

*PASSION for
PROGRESS*

© 2020 BAUER Spezialtiefbau GmbH. All rights reserved.

