



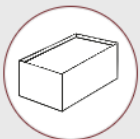
We support PV systems  
... from the beginning.



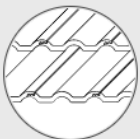


# About us

- / German mounting systems manufacturer
- / Focus on rooftop systems
- / High quality systems for quick installation
- / 12-year warranty on all components
- / Static calculation
- / Global experience



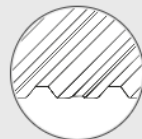
Flat roofs



Tiles



Corrugated fibre cement



Trapezoidal sheet metal



Standing/round seam  
roof



# K2 at a glance



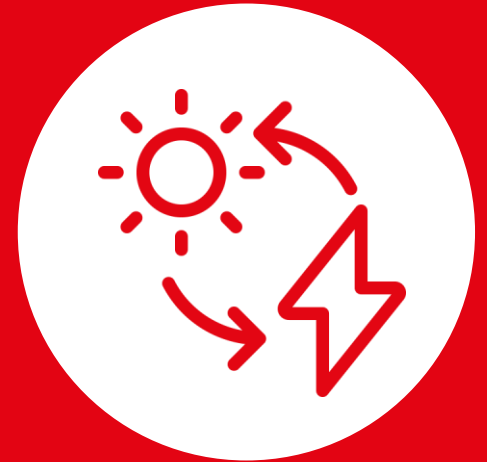
**210**  
employees



**17 years**  
experience



**> 120**  
distributors



**> 16 GW**  
installed capacity

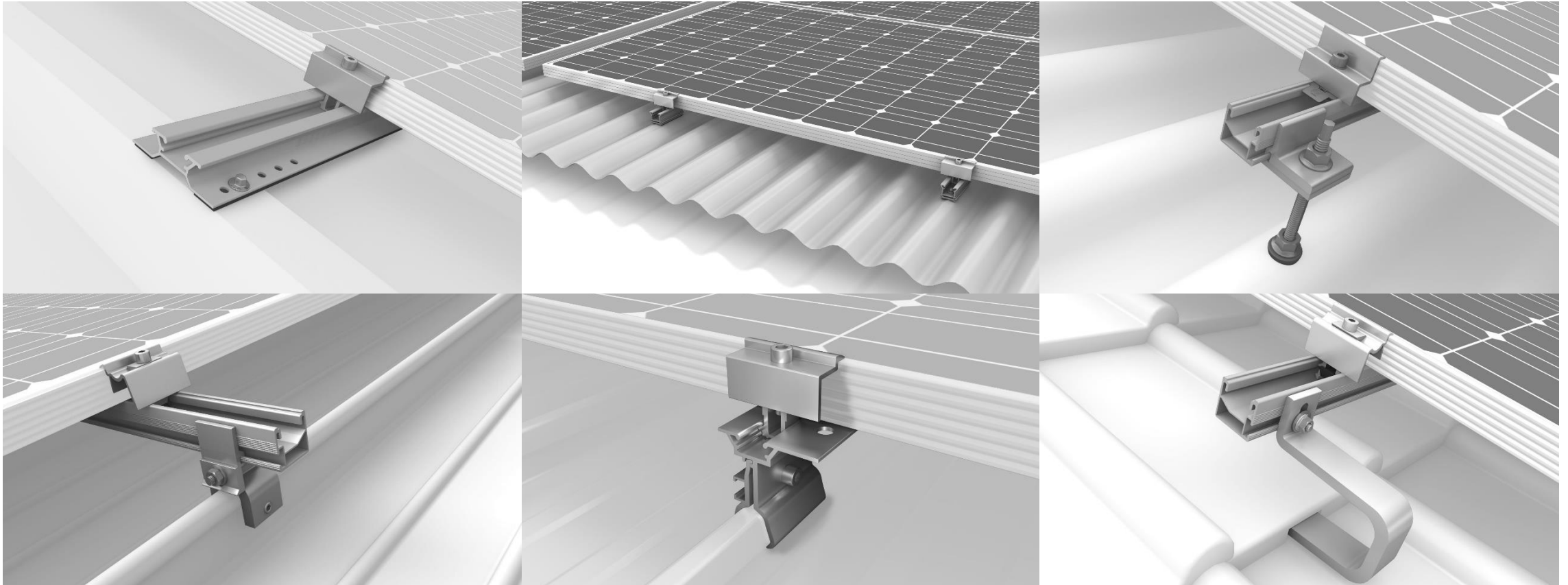
# 9 locations on 5 continents

Installed in over 130 countries

- / 2004: Germany
- / 2009: Italy
- / 2010: France
- / 2011: England
- / 2012: USA
- / 2015: Mexico
- / 2017: South Africa
- / 2018: Brazil
- / 2021: Australia



# Pitched roof systems







© Pon Power BV



© GM Solar S.r.l.



© SunTechnics Fabrisolar SA, SI-REN SA



© DHYBRID



© Enersolax, Energía de Pereira

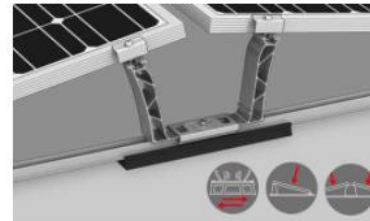


© MHB



# Flatroof systems

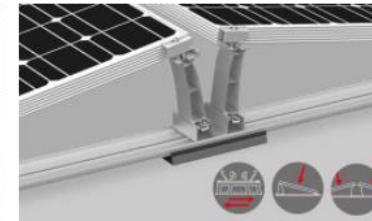
- / one or two-sided elevation, standard 10 or 15°, triangles up to 30°
- / few components, fast installation
- / ballast-optimized, ballast according to wind load at site, also roof attachments possible
- / aerodynamically optimized as a result of wind tunnel testing
- / static verification



## Dome 6.10 Systems

Pre-assembled for time-saving assembly or unassembled for cost efficiency. Available elevated on one/two sides.

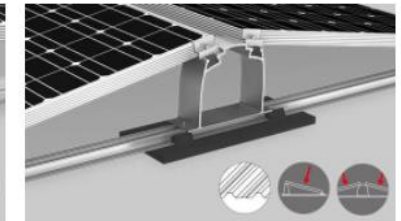
[More](#)



## Dome V Systems

Time saving due to simultaneous assembly, reduced screw connections. Available elevated on one/two sides.

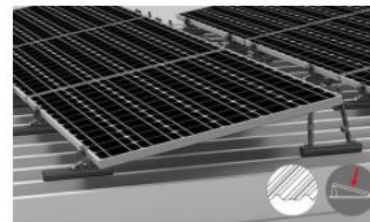
[More](#)



## Dome Classic Systems

Assembly-friendly classics thanks to the use of fewer components. Available elevated on one/two sides.

[More](#)



## S-Dome Small System

Suitable for flat and trapezoidal sheet metal roofs. Saves material and transport and has a secure holding force.

[More](#)



## TiltUp Vento System

Many different module arrangements, suitable for larger modules and 3 different elevation angles: 20°, 25° and 30°.

[More](#)



## Triangle/MultiAngle System

High flexibility due to individually adjustable elevation angles and universal module orientation.

[More](#)





© Plan-Net D.O.O.



© Enercity



© Photovoltaik Montage Zimmermann



© Renewable Energy Developers



© MHB Süd GmbH



© SOLA FUTURE ENERGY



© HEG Energie



© Abel Retec

© Softgroup



# K2 Digital Toolbox

USER K2-ID



PROJECT RECORDING

PROJECT DESIGN

PROJECT DOCUMENTATION

CH

K2 CheckApp

BA

K2 Base

DO

K2 DocuApp



INSTALLATION



API: K2+



# K2 Base: Simple, fast and safe

- / **Fast and easy planning** in 5 steps of K2 mounting systems for pitched and flat roofs
- / **Google Maps integration** and graphical drawing tools
- / **Structural validation** according to Eurocode with 16 national annexes as well as 8 other standards such as ASCE, JIS and ABNT
- / **Result** is a project-specific structural verification including a BOM for the mounting system
- / **Dashboard** for easy and fast project management
- / **K2+ API** for data transfer to SolarEdge, SMA, Fronius, Kostal, GoodWe and archelios™ PRO
- / [base.k2-systems.com](http://base.k2-systems.com)






# Thanks for your attention!

**Melanie Stenzel**

International Sales

 +49 151 1868 9691

 [m.stenzel@k2-systems.de](mailto:m.stenzel@k2-systems.de)

