



# Professional Offshore Services

# Company Presentation

## German-Taiwanese Offshore Wind Conference 24.09.2019



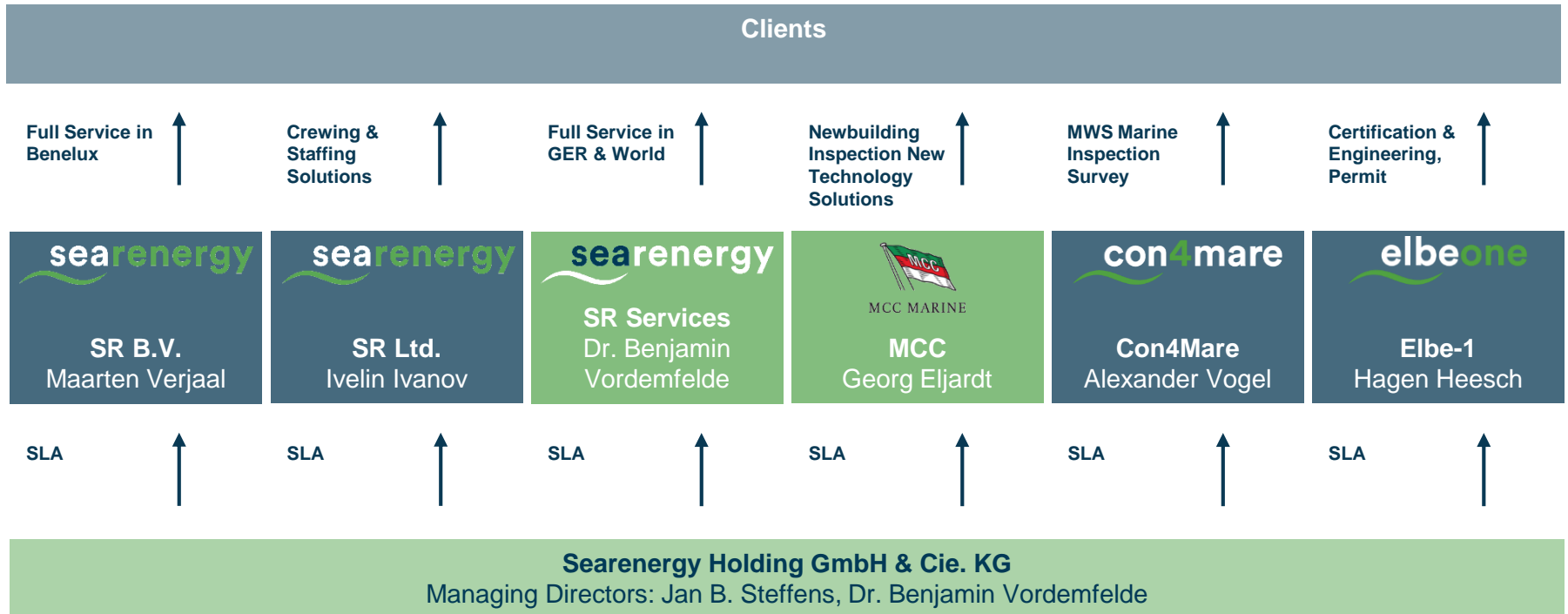
Deutsches Wirtschaftsbüro  
German Trade Office  
Taipei  
德國經濟辦事處

# Content

A photograph of an offshore wind farm at sunset. The sun is low on the horizon, casting a golden glow over the sea and sky. Several wind turbines are visible in the distance. In the foreground, a yellow metal railing and a red lifebuoy are visible on the deck of a ship or platform.

- **Group Key Facts**
- **Group Structure**
- **Working Standards**
- **Group Services**
- **Group Key References**
- **Contacts**

# Searenergy Group



# Group Key Facts



- **Mother company founded in 2010**
- **Privately owned by Bertram Rickmers & Jan B. Steffens**
- **Con4Mare acquired in 2016**
- **Elbe-1 acquired in 2019**
- **Located in Hamburg (GER), Den Haag (NL) and Limassol (CY)**
- **70 + permanent employees**

# Working Standards



**Safety Culture Ladder**  
NEN



**ISO 9001:2015**  
**ISO 14001:2015**



**OHSAS 18001:2007**



**Achilles**  
(UVDB; Utilities NCE)

March 2018:  
**Successful completion**  
of the Safety Culture  
Ladder Audit (**Level 3**)

March 2019:  
**Successful completion**  
**of extension** of the  
Safety Culture Ladder  
Audit (**Level 3**)

June 2019:  
**Member of German**  
**workgroup** for Safety  
Culture Ladder Standard

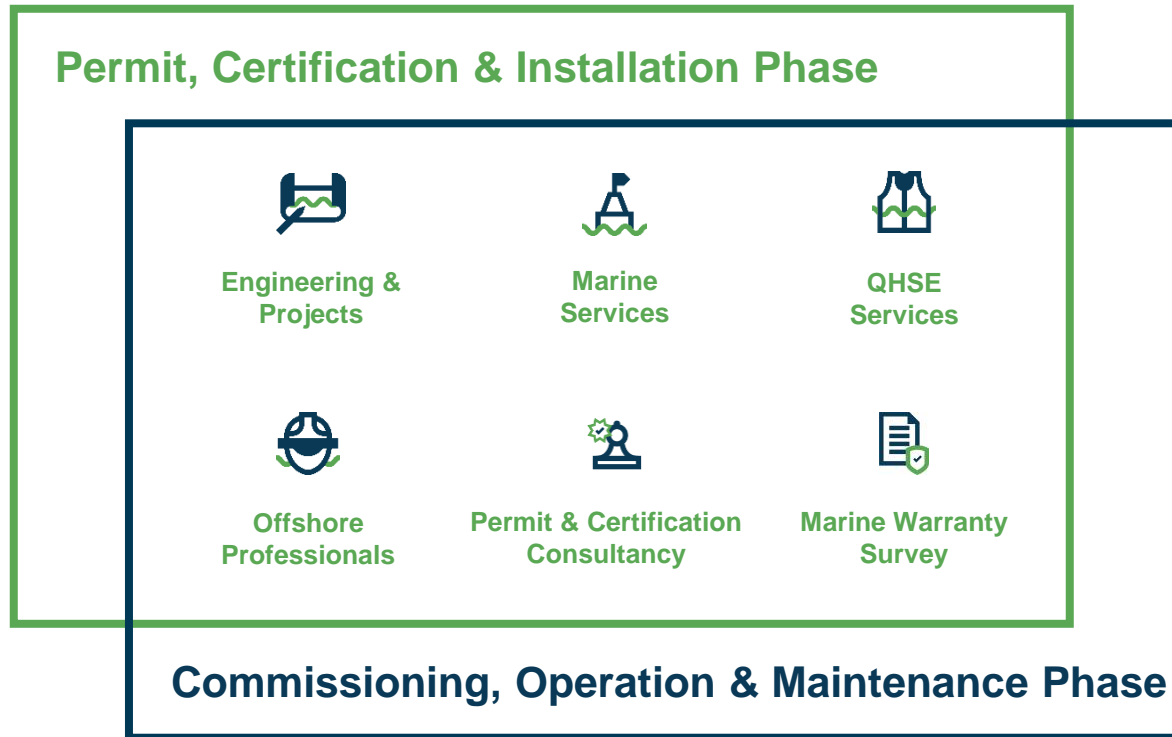
**ISO 9001:2015** sets  
the criteria for a  
**quality management**  
system.

**ISO 14001:2015** sets  
the criteria for an  
**environmental**  
management system.

**OHSAS 18001:2007**  
Occupational **Health**  
**and Safety**  
**Management**  
**Certification** is an  
international standard  
which provides a  
framework to identify,  
control and decrease  
the **risks** associated  
with **health and safety**  
within the **workplace**.

Achilles is one of the  
world's leading global  
**supply chain risk**  
**management**  
companies.

# Group Services





# Group Services





# Group Services



## Engineering & Projects

- Transport & Installation Concepts
- Load Definition
- Structural Stability Checks
- Vessel Selection
- Onsite Support
- Heavy Lift Engineering



# Group Services



## Marine Services

- Onshore, Port & Offshore Logistics
- Construction Site Safety
- Offshore Marine Operations
- Marine Coordination
- Provision of Vessels (CTV / PSV)
- Provision of Helicopters
- Catering & Outfitting services





# Group Services



## QHSE Services

- Development of Emergency Response Plans
- QHSE Management & Supervision
- Permit to Work
- Provision of Risk Assessments
- Incident & Accident Investigation
- Execution of HAZIDs
- QHSE - supervision of construction works



# Group Services



## Offshore Professionals

- Provision of Project Specialists (onshore)
- Provision of Offshore experienced Professionals
- Assessment and Training of Personnel
- Personnel Management Service
- Manning Concepts
- Visa Support for Clients





# Group Services



## Design & Permit & Certification

- Design consultancy
- Project certification consultancy acc. to all available certification schemes
- Permits consultancy acc. to international local regulations
- Market readiness studies
- Due diligence studies
- Project management
- Type certification processes
- Design consultancy
- Collateral clauses from permit authorities
- Periodic inspections



# Group Services



## Marine Warranty Survey

- **Surveys & Inspections**
  - Vessel Surveys: CMID, Condition, On- / Off-hire, Vessel Assurance, DP
  - Equipment Inspections: Lifting Appliance (LEEA/DIN), LOLER, Crane
  - Surveys: Loading Inspection, Cargo Surveys, Fabrication Inspection
- **(Pre-accompanying) Consultancy**
  - Feasibility Studies, Design & Analysis, Engineering Evaluation
- **Risk & Safety**
  - Risk Management, HSE Document Review, Legal Compliance
- **Certification Services**
  - LEEA Certification, 3rd Party Approval, MWS Approval





## Group Key References



# DolWin alpha HVDC Platform

### CLIENT

TenneT Offshore GmbH

### SERVICES

Engineering & Projects

### PROJECT PHASE

Operation & Maintenance

### DURATION

2018 – ongoing

### SCOPE

Design, fabrication and installation of repair clamps for the jacket structure subsea including required surveys, project management, documentation, reporting, personnel, divers, vessel provision, material and equipment.

1. **Adapting and detailing Client concept design** to final workable solution
2. **Supervision of detail structure design and interface management** towards certifier and fabrication subcontractor incl. management of single case approval
3. **Subcontracting fabrication and supervision** thereof
4. **Planning of offshore diving and installation campaign**
5. **Offshore ovality measurements** (videogrammetry) of the substructure as preparation for the substructure modification.
6. **Offshore execution of the substructure modification** supported by divers and ROVs:
  - Site preparations by inspections, dredging and steel surface cleaning and rigging pre-installation
  - Subsea transport of clamps from landing zone to the jacket using airlift bags and hydraulic winches
  - Attachment and fixation of clamps underneath jacket, final bolting and activating
  - Cleaning up of work site and final inspections



## Group Key References



## Trianel Windpark Borkum II

### CLIENT

Seaway Heavy Lifting

### SERVICES

Marine Services  
Offshore Professionals

### PROJECT PHASE

Installation

### DURATION

2019 – ongoing

### SCOPE

1. **Execution of TP Maintenance Campaign**
2. **Provision of Offshore Professionals** (incl. Team Leaders)
3. **Procurement of Material**, tools, equipment, other services required for the TP maintenance
4. **Onshore Project Management:**
  - Project steering and supervision
  - Provision of required documentation (RAMS, HSE Plan, Quality Plan, Inspection & Test Plan, Reporting)
  - Assurance of compliance with legal and QHSE requirements
  - Crew & travel management





## Group Key References



## OSS Hohe See

### CLIENT

Consortium of Engie  
Fabricom, Iemants and CG

### SERVICES

Marine Services  
Offshore Professionals

### PROJECT PHASE

Commissioning, Operation &  
Maintenance

### DURATION

2018 – ongoing

### SCOPE

#### 1. Provision of Jack-Up Barge

- Vessel Selection according to client requirements
- Execution of HAZID audit prior to sail-out
- Accompanying of Vessel Mobilization, Sail-Out, Vessel Positioning
- Vessel Management incl. vessel supply, refueling, crew change logistics
- Execution of ROV survey for scour monitoring and measurement of leg penetration
- Vessel demobilization

#### 2. Provision of OSS Platform Manager

#### 3. Overall Management for on- and offshore logistics

#### 4. Provision of CTV for crew transfer and small cargo handling

#### 5. Provision of helicopter

#### 6. Crew & Aviation Coordination

#### 7. Supply Logistics & Warehousing

#### 8. Provision of Catering and Outfitting of TLQs and provision of corresponding personnel

#### 9. Provision of PSV and Cargo Runs Management

#### 10. Fuel Supply and Platform Refueling



## Group Key References



## BorWin gamma HVDC Platform

### CLIENT

Petrofac

### PROJECT PHASE

Post-Installation /  
Commissioning

### SERVICES

Marine Services  
QHSE Services  
Offshore Professionals

### DURATION

2018 – 2019

### SCOPE

1. **HSE Consultancy & Documentation**
2. **Arrangement of required Surveys & Certification** in acc. with German law
3. **Assistance of governmental / administrative Matters**
4. **Arrangement and Management of Diverse Services** (seabed survey, drone survey)
5. **Vessel Chartering & Coordination**
6. **Procurement of technical parts**
7. **Customs and Transshipment Clearance / Administration**
8. **Provision of Helicopter Flights & Coordination**
9. **Crew Change Logistics**
10. **Crew Onshore Accommodation**
11. **Personnel Provision:** OIM, NOM, Material Coordinator, Crane Operators, Deck Foreman, Riggers, Control Room Operators, Electricians, Mechanics Telecommunication Engineer, Field Operator, Safety Engineer (Fachkraft für Arbeitssicherheit), HSE Officer, Safety Officer, PTW Coordinator, ERT Team







## Group Key References



## BorWin beta HVDC Platform

### CLIENT

Siemens AG

### SERVICES

Engineering and Projects  
Marine Services

### PROJECT PHASE

Development and Installation

### DURATION

2012 – 2014

### SCOPE

EPCI contract consisting of:

1. **Project Management**
2. **Development of a T&I Concept**
3. **Management** of all Interfaces
4. **Design and Procurement** of all necessary installation tools incl. certification where necessary
5. **Selection, Chartering and Management** of vessels and barges
6. **Execution of the Offshore Works**, providing all required logistics and 24/7 back office support during operations



## Group Key References



## HelWin alpha HVDC Platform

### CLIENT

Siemens AG

### SERVICES

Engineering and Projects  
Marine Services

### PROJECT PHASE

Development and Installation

### DURATION

2012 – 2014

### SCOPE

EPCI contract consisting of:

1. **Project Management**
2. **Development of a T&I Concept**
3. **Management** of all Interfaces
4. **Design and Procurement** of all necessary installation tools incl. certification where necessary
5. **Selection, Chartering and Management** of vessels and barges
6. **Execution of the Offshore Works**, providing all required logistics and 24/7 back office support during operations





## Group Key References

Global  
Tech I\*  
400 MW

BorWin gamma

BorWin3

Norderney

Borkum

Emden/Ost

## Export Cable Hohe See

### CLIENT

ZTT

### SERVICES

QHSE Services

### PROJECT PHASE

Engineering, Purchase,  
Installation, Commissioning

### DURATION

2017 – ongoing

### SCOPE

1. **QHSE Management and Support** for the EPIC of HVAC export cable connections between Hohe See Offshore Substation (OSS) and BorWin gamma HVDC platform
2. **Supervision and Support** during cable load-outs, cable transport, installation and commissioning phase of the project
3. **Supervision and Support** during shunt reactor delivery and installation on OSS during outfitting
4. **Supervision and Support** of cable installation on OSS during outfitting
5. **Supervision and Support** during commissioning and testing phase
6. **Provision of Permit Manager**



## Group Key References



## Owners Engineer in Hohe See & Albatros Offshore Wind Farm

### CLIENT

SGRE

### SERVICE

Owners Engineer during all phases

### PROJECT PHASE

Design, Manufacturing,  
Installation, Commissioning

### DURATION

since 12/2014

### SCOPE

EPCI contract consisting of:

1. **Project Management**
2. **Engineering management WTG foundation**
3. **Engineering management OSS foundation**
4. **Geotechnical consultancy**
5. **Certification consultancy**
6. **permit requirements (BSH)**
7. **Contract negotiation.**
8. **Non Conformities during design, manufacturing and installation.**
9. **Marking requirements**
10. **Noise mitigation concepts**
11. **Fire protection concepts**



## Group Key References

# Project Certification of the Offshore Wind Farm CFXD in Taiwan

### CLIENT

Copenhagen Offshore  
Partners

### SERVICE

Design consultancy  
Project certification consultancy

### PROJECT PHASE

Development and Installation

### DURATION

since 11/2018

### SCOPE

EPCI contract consisting of:

1. Project Management
2. Scope of Work for project certification acc. to Taiwanese BSMI requirements
3. Design consultancy
4. Project certification execution







## Group Key References

# Retrofit implementation at the ADWEN M5000 WTG

---

### CLIENT

Siemens SGRE (ADWEN)

### SERVICE

Design consultancy  
Project certification consultancy

### PROJECT PHASE

Development and Installation

### DURATION

since 08/2019

---

### SCOPE

1. Project Management
2. Supporting development of a retrofit design
3. Scope of Work for project certification acc. to BSH requirements
4. Design consultancy
5. Project certification execution
6. Communication towards permit authorities.



## Group Key References

# Owners Engineer during FDR & FIR Approval in the US Vineyard project

### CLIENT

MHI Vestas Offshore

### SERVICE

FDR & FIR Approval

### PROJECT PHASE

Development and Installation

### DURATION

since 11/2018

### SCOPE

EPCI contract consisting of:

1. **Project Management**
2. **Scope of Work for FDR & FIR approval acc. to US BOEM requirements**
3. **Design consultancy**
4. **Project certification execution**



## Group Key References

# MWS for Offshore Windfarms

### CLIENTS

Ørsted  
Ørsted  
GeoSea  
EnBW  
EnBW  
Trianel  
Nordsee One GmbH / RWE

### PROJECTS

Hornsea One  
Borkum Riffgrund 2  
Merkur  
Hohe See  
Albatros  
Trianel  
Nordsee One

### SCOPE

Marine Warranty Survey including Review and Approval of Documents as well as On-Site Surveillance for:

1. **Load Out**
2. **Seafastening**
3. **Transport** including Interim Transports
4. **Installation**





## Group Key References



## MWS for HVDC & Transformer Platforms

### CLIENTS

ENERGINET.DK

GeoSea

Trianel

ENERGINET.DK

Siemens

Alstom

Siemens

TÜV Rheinland / Allianz / Siemens

TÜV Rheinland / Allianz / Siemens

TenneT

TenneT

### PROJECTS

Kriegers Flak

Merkur

Trianel

Horns Rev C

BorWin beta

DolWin gamma

HelWin alpha

HelWin beta

SlyWin alpha

DolWin kappa

DolWin epsilon


### SCOPE

Marine Warranty Survey including Review and Approval of Documents as well as On-Site Surveillance for:

1. **Load Out**
2. **Seafastening**
3. **Transport** including Interim Transports
4. **Installation**

# Contact


## Searenergy Offshore Holding GmbH & Cie. KG

 Alsterufer 26  
20354 Hamburg  
Germany

 +49 40 808 172 100

 [info@searenergy.com](mailto:info@searenergy.com)

## Con4Mare GmbH & Cie. KG

 Alsterufer 26  
20354 Hamburg  
Germany

 +49 40 22 61 61 20

 [info@con4mare.com](mailto:info@con4mare.com)

## ElbeOne GmbH

 Dorfstraße 39  
25770 Lieth  
Germany

 +49 171 64 999 64

 [office@elbeone.com](mailto:office@elbeone.com)