

 **ASB**  
GlassFloor

 **ASB**  
SquashCourts

 **ASB**

 **ASB** Architectural

 **ASB**  
AquaLuma

# Introduction

ASB is known for its innovations and sustainable design in the world of sport and has already revolutionized the squash sport. ASB's experience and in-depth knowledge of the high-quality materials are incorporated into the most modern flooring system currently on the market.

ASB (short for 'Aluminium System Building') was founded in 1965. Visionary and trained advertising specialist Horst Babinsky founded 'Babinsky Trockenbau KG', which then developed into Systembau Horst Babinsky GmbH. The company began to market the first plastic curtain rail. Design affinity and vivid contact with architects soon lead to Horst Babinsky becoming Germany's most successful licensee for the revolutionary system of aluminium prefabricated buildings. Later, together with Hardy Rensch, he developed the ASB building system, an intelligent aluminium prefabricated building system with more than 100 buildings in Germany and the world. Kindergardens, institutes, schools and private homes are manufactured very quickly in a very short period of time. In 1975 Horst Babinsky developed the ASB SquashCourt and thereby paved the way into the sports sector. Within 10 years, the ASB SquashCourt became the international market leader – and a history of ground-breaking innovations begins. Horst Babinsky is still active in the company and there to advise. In 2012, his son Christof Babinsky took over the family business as Managing Director and has expanded ASB's knowledge further in developing the ASB MultiSports floor and releasing the ASB LumiFlex.

# ASB SquashCourts

ASB is a pioneer- choose the original!

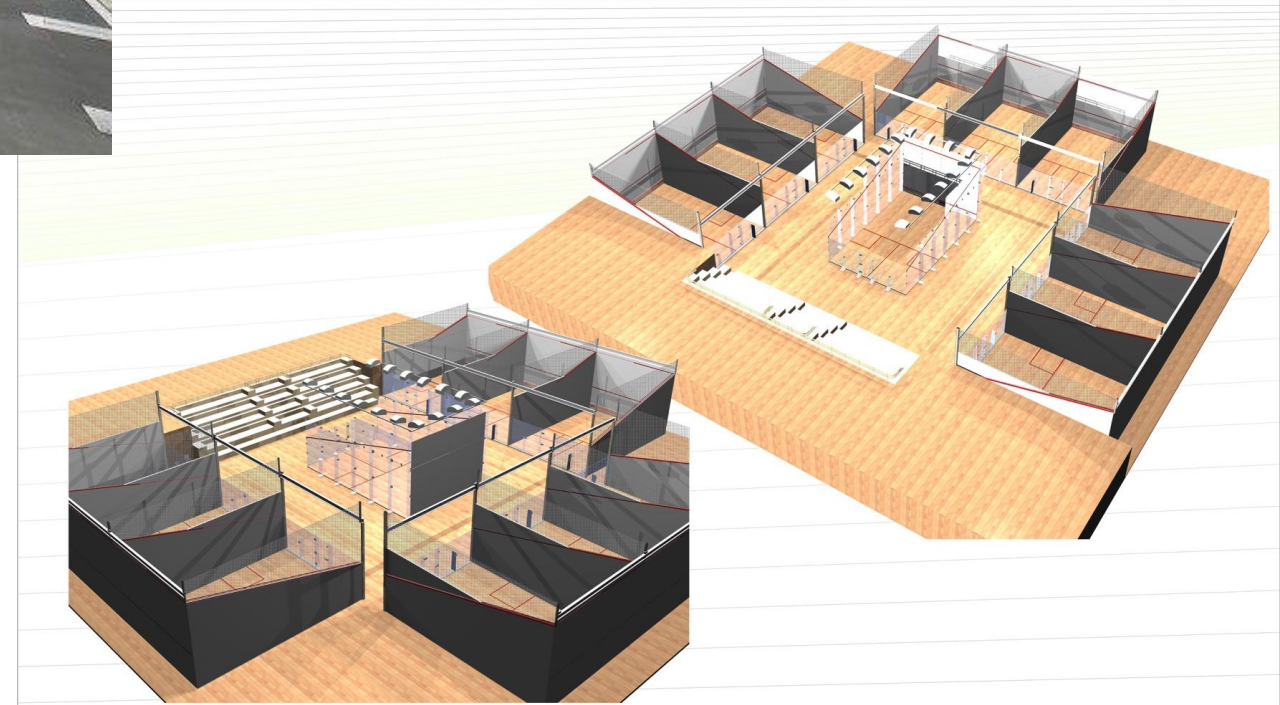
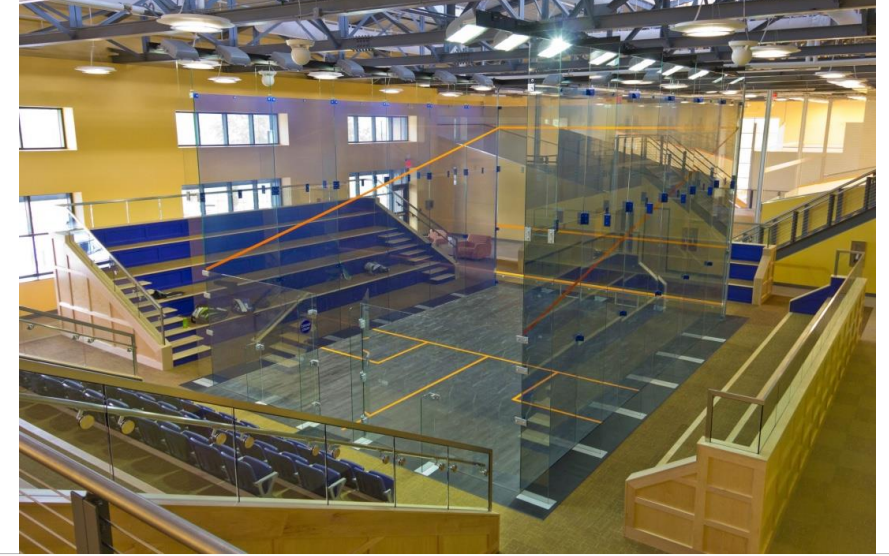
There is no other company on the market building high density board Court systems that have been successful for such a long time.

Since 1977, our experience is your advantage. Innovation results from experience. Almost all innovations for Squash Courts are from ASB.

ASB is always a step ahead of the competition, due to constant research and development.







1x GlassCourt  
3x GameCourt with movable walls





# ASB ShowGlassCourt

## TV optimization / innovation:

- Black GlassFloor (outdoor tests with Greg Gaultier, Paul Coll, Simon Rösner and more)
- LED lights (super slow-motion optimized)



Manchester World Champs - Galleries presented by F



# ASB ShowGlassCourt

## Outdoor standard:

- Glass with white dots (black ball use)
- Plastic floor – drainage system
- GlassFloor (optional)
- Light system (optional)



# ASB TPoint

## World's First Smart Court

### Outdoor High End:

- Independent building
- Modular system
- 1 to x units to combine
- Self advertising



# The GlassFloor

Thanks to ground-breaking technology, our ASB GlassFloor is to be seen as a whole new sports flooring concept, combining high-end sports functionality with multipurpose usage and visual experiences for various sports or special occasions.

The ASB GlassFloor meets all industry standards of a professional sports floor, including the EN and DIN norm (shock absorption, ball rebound, slip resistance, vertical deformation, friction, etc.). The materials used (glass, ceramic and aluminium) provide resilience and longevity. Moreover, due to the matt surface, the glass floor does not show scratches or other signs of wear-and-tear. In addition, our glass floor has an expected lifetime of 70 years and is more elastic than common wooden floors. In combination with our specially developed aluminium dual-support sprung floor sub-construction, elasticity and absorption are consistent across the entire area. Furthermore, the floor surface does not reveal any visible reflections, making the surface look homogeneous and neutral. Non-slip properties give the floor the right level of slip-resistance while preventing the risk of injury when a player dives or jumps for the ball. Additionally, the GlassFloor is easy to clean and maintain.



# ASB MultiSports

The ASB MultiSports GlassFloor was designed as a high performance floor, meeting the international standard EN 14904 for indoor sports flooring.

The customizable LED marking lines are a great feature that allow professional single sport layouts for different sports all in one space.

The long lifetime, low maintenance and great appearance make it the ideal sports floor for public and private venues.













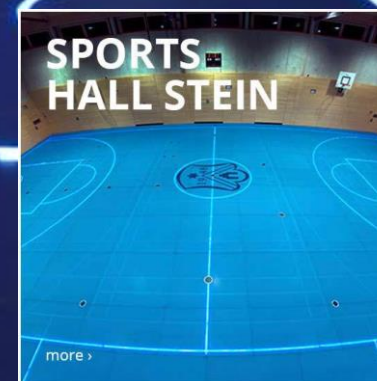
# ASB MultiSports

Projects realised world wide

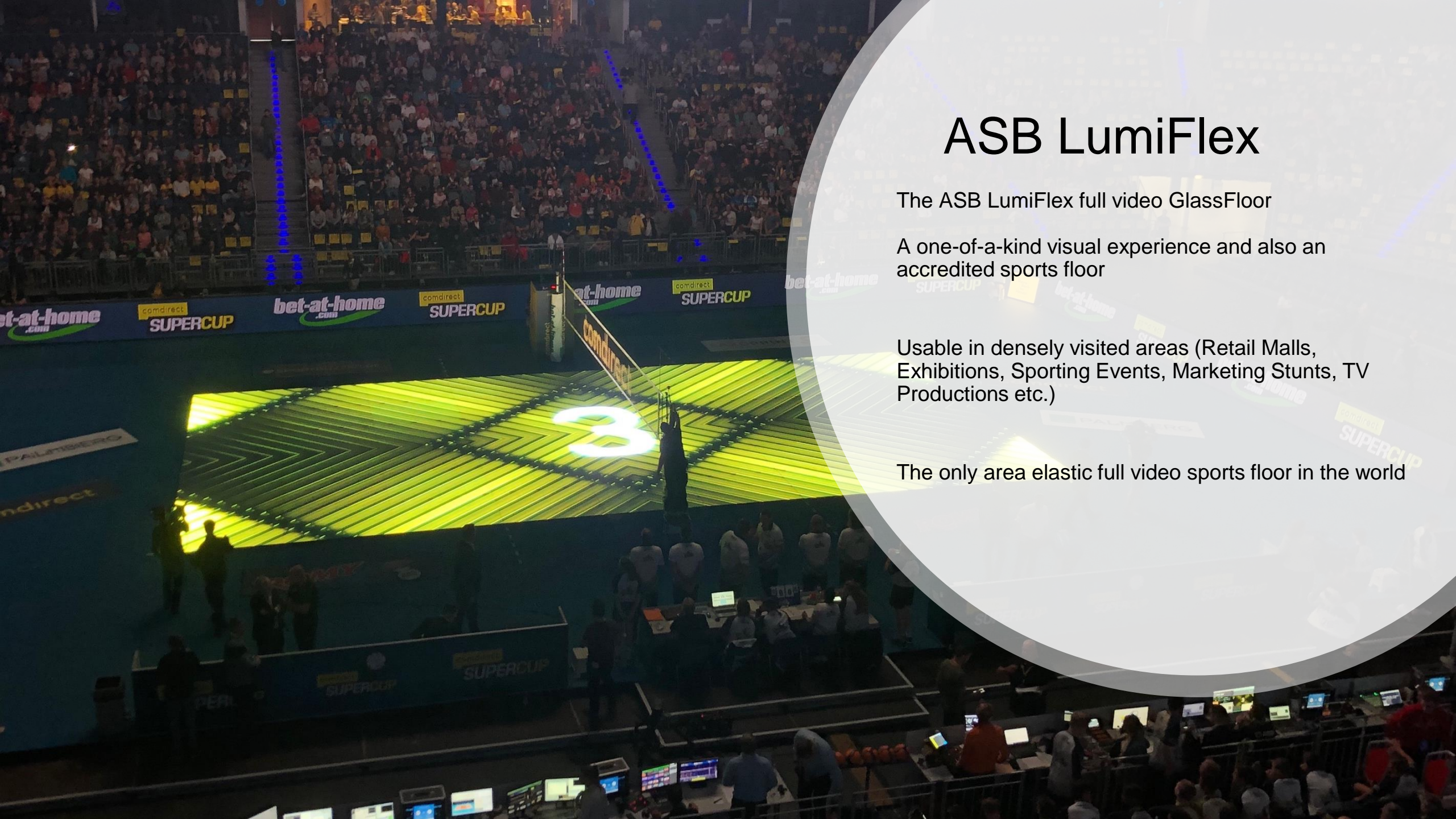


... and in more countries:

- Switzerland
- France
- Thailand
- South Korea







# ASB LumiFlex

The ASB LumiFlex full video GlassFloor

A one-of-a-kind visual experience and also an accredited sports floor

Usable in densely visited areas (Retail Malls, Exhibitions, Sporting Events, Marketing Stunts, TV Productions etc.)

The only area elastic full video sports floor in the world

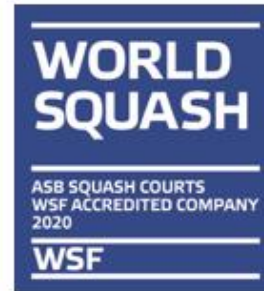


Experience





# Certifications



# PLEIN

## ASB Architectural

Application outside of sports

Retail, malls, museums, atriums, stages

Customized LED solutions for floors, walls and ceiling, covered with our special glass for a 180° viewing experience

Reducing the viewing distance with our special glass solutions

Looks like a printed surface

Perfect touch – Perfect protection of LED – Perfect cleaning





Microsoft  
Headquarter  
Dublin



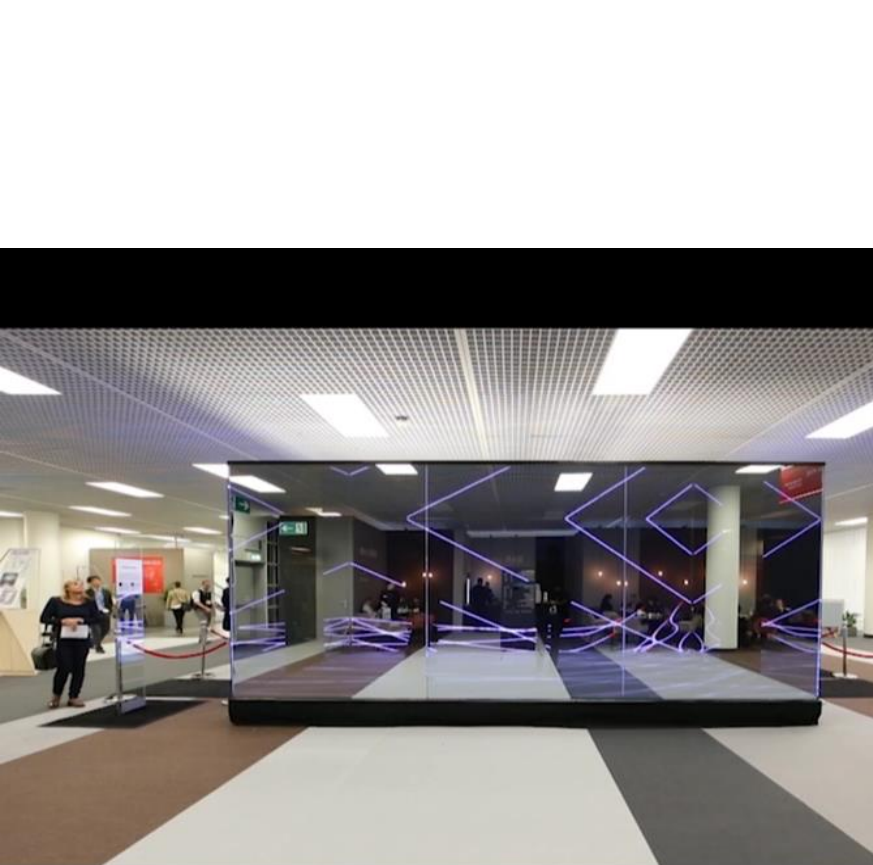


# DeepLumen

DeepLumen is an architectural installation designed by ASB that is constructed using a combination of one-way glass, LEDs and mirrors. The floor and one wall are LED screens which display the algorithms designed by artist Marc Gumpinger.

 **ASB** Architectural

The algorithms bounce off each side of the cuboid's interior and produce an all-encompassing experience for the people inside. They cannot see outside, but the people outside can see in, creating a sense of illusion and allowing the people outside to watch people's reactions.





DigitalWallpaper

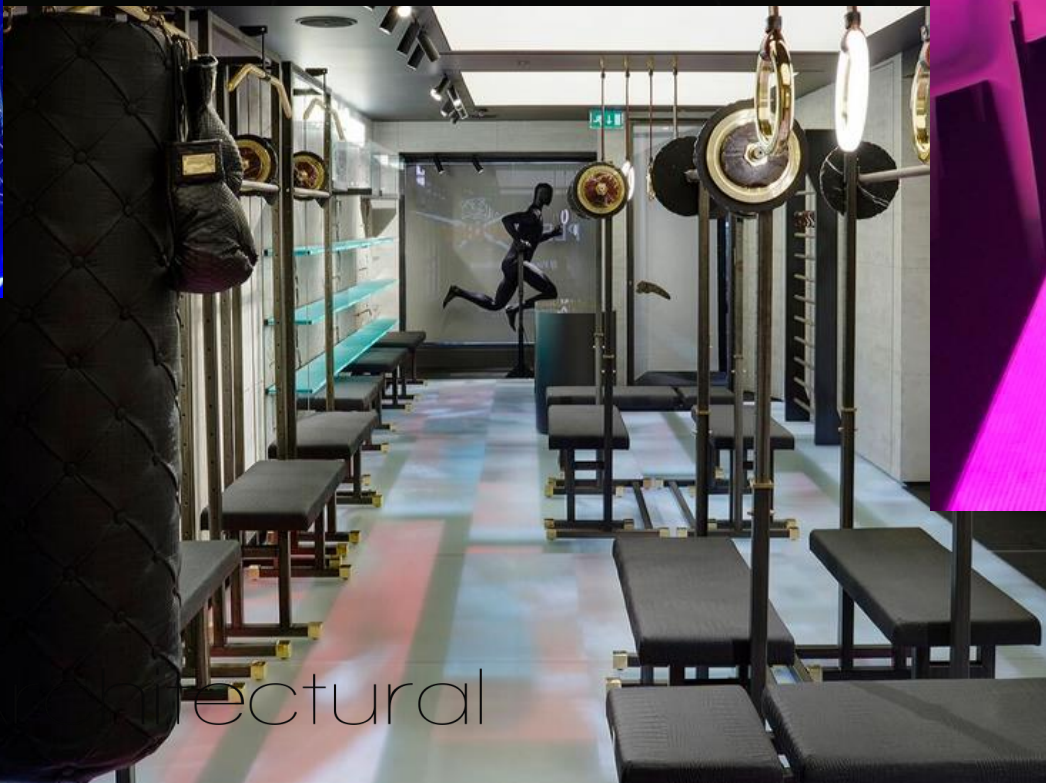
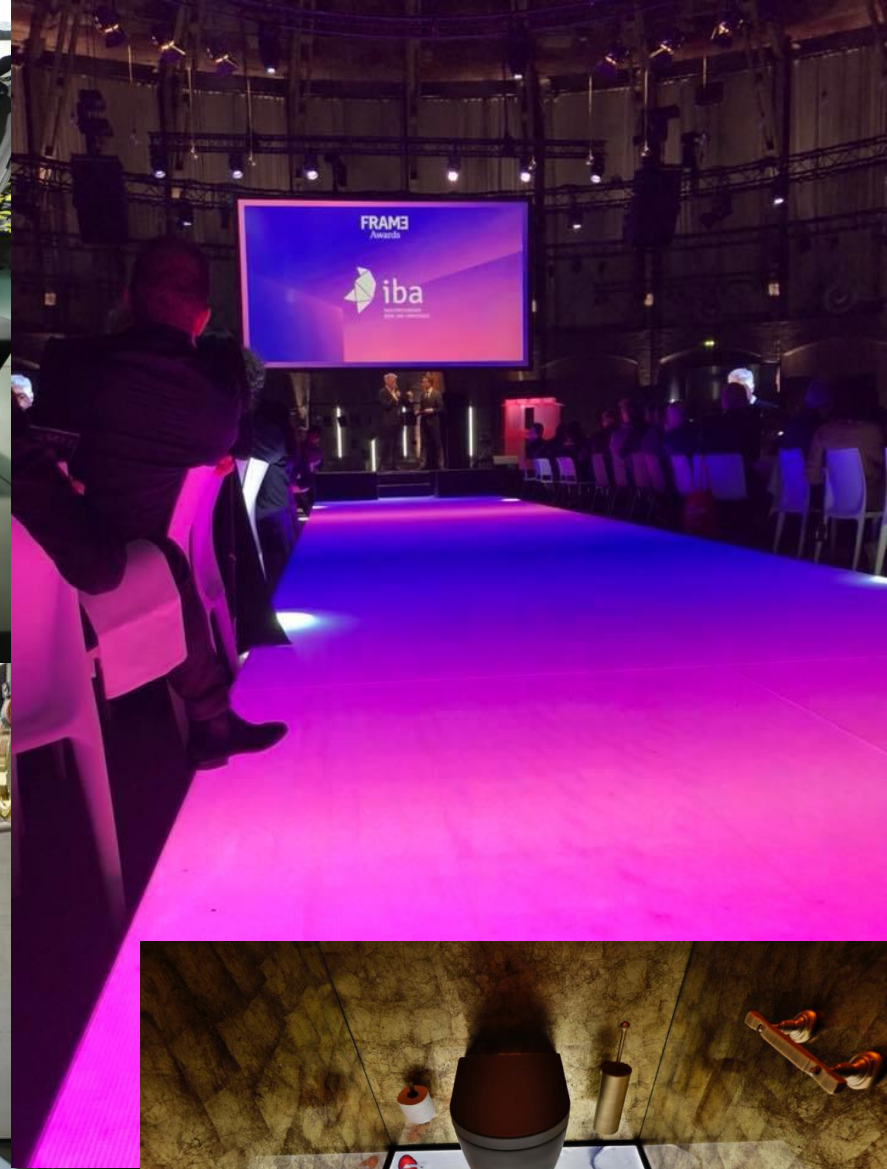
Installation demonstrating how  
the purpose of an exhibit. The  
fluent emotional environment  
space, although the physical en-  
vironment, can inflict emotional reac-

focuses on the creation of such  
approach to technology. Rather  
written information or advertis-  
in integrating digital hardware in  
eye or touch is never improved to  
screen meets all requirements for  
and environments.

lectual








ASB Architectural





# ASB AquaLuma

In cooperation with the Marseille-based company POOLOOP, ASB GlassFloor created the first of its kind fully multimedia capable LED video floor for a swimming pool, the '21h40'.

Thanks to ASB's glass flooring technology, it is easily possible to broadcast content from a mobile phone straight to the pool's floor.

The '21h40' provides any guest with a unique and immersive experience. With one click you can personalize your environment and the swimming pool comes to life, allowing users to swim with dolphins, dive into a pool full of sharks, or descend into an active volcano straight off the porch.

Regardless of pool size and depth, the '21h40' can meet any customer's and/or location's needs.







ASB Systembau Horst Babinsky GmbH

Fabrikstraße 14

83371 Stein

Germany

+49 8621 987410

[info@asbglassfloor.com](mailto:info@asbglassfloor.com)



# ASB GlassFloor on Social Media



[@asbglassfloor](https://www.instagram.com/asbglassfloor)



[@asbglassfloor](https://www.facebook.com/asbglassfloor)



[@asbglassfloor](https://www.pinterest.com/asbglassfloor)



[@ASBGlassFloor](https://www.youtube.com/ASBGlassFloor)



[@asbglassfloor](https://www.linkedin.com/company/asbglassfloor)