

Always. Reliable. Tight.



Company Presentation

Always. Reliable. Tight.

Hauff-Technik is among Europe's leading manufacturers of cable, pipe and line entries. We are a full-service provider of completely reliable sealing systems and find the best possible solution for every requirement. Including yours.

ALWAYS. RELIABLE. IMPRESSIVE.

The new company building in Hermaringen since 2014



Hauff-Technik expands



Turnover
2018: **85 million Euro**

Employees
2018: **310**

ALWAYS. RELIABLE. STRONG.

Our parent company INDUS HOLDING AG.



ALWAYS. RELIABLE. TIGHT.



Cable. Pipe. Building Entry.

Fast and efficient planning is key for every project. Hauff-Technik now offers architects and specialist planners the possibility to download all products CAD compatible.



Solution world



ALWAYS. RELIABLE. TIGHT.

3-level support

- Integrate in early digital design stage with engineering & consultancy companies
- Specifying products, tender spec. Texts, certificates, approvals, datasheets derived directly from our website
- Implement in projects, training on-site

SOLUTION WORLD

**NEW: PLANNING
SUPPORT TEAM**

CLICKED, FOUND: YOUR PRODUCT, YOUR TENDER SPECIFICATION.

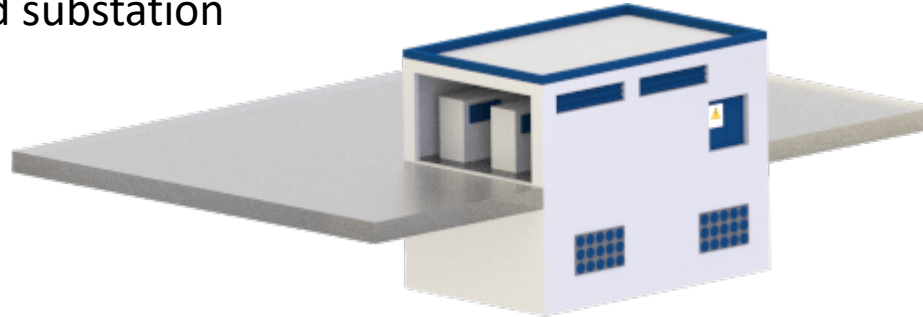
Click through to the exactly right product via your project and your application. Or contact our Planning Support Team who will provide you with highly skilled assistance.



Solution world: Substation



Building integrated substation



Transformer station with switch-gear building



Cable shaft / Cable duct


Solution world: Substation

CN

DOWNLOADS

Technical drawings

 HSI 150-K/X (pdf, 4 MB)

 HSI 150-K/X (DWG, 457 KB)

Assembly instructions


 HSI 90/HSI 150-Dichtpackungen (pdf, 2 MB)

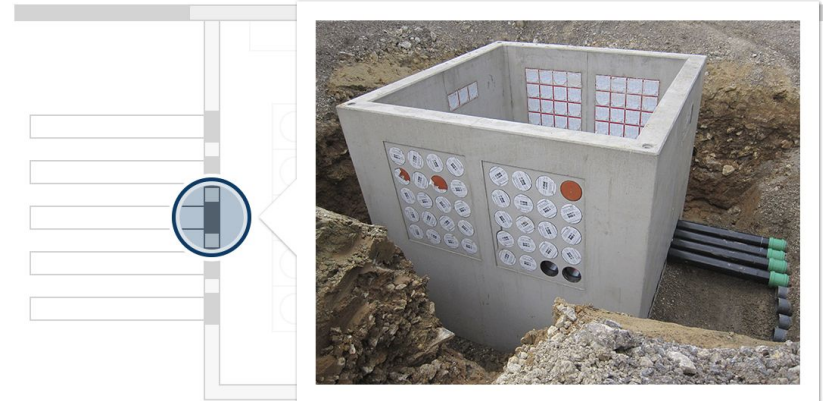
Test reports

 HSI 150 (pdf, 2 MB)

 HSI 150 / HEA (pdf, 1 MB)

Data sheet & tender specification

For download of data sheet and tender specification please configure the product in the section below and download via the symbol 



ALWAYS. RELIABLE. TIGHT.

All from one source: The new Hauff-Dimension.

No matter which application, which building, which grid.
Hauff-Technik always offers the perfect solution.

PROJECT

From planning stage to completion – we take care of
your construction site.

PARTNER

With wholesalers and representatives to mutual success.

INDUSTRY & UTILITIES

Together we develop standard solutions based on
customized components.



ALWAYS. RELIABLE. INNOVATIVE.



Hauff-Technik ranks among the „TOP 100“ and „TOP JOB“-entrepreneurs of German medium-sized enterprises

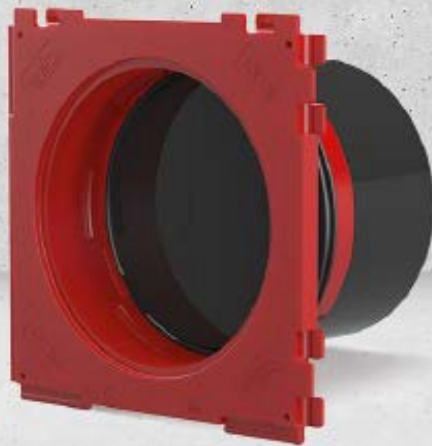


ALWAYS. RELIABLE. VISIONARY.

The way from the first patent to the full-service supplier for totally reliable sealing systems.

1975

Cable entries



1988

Pipe wall penetrations



ALWAYS. RELIABLE. TIGHT.

hauff
technik



ALWAYS. RELIABLE. VISIONARY.

The way from the first patent to the full-service supplier for totally reliable sealing systems.

1998

Building entries



2004

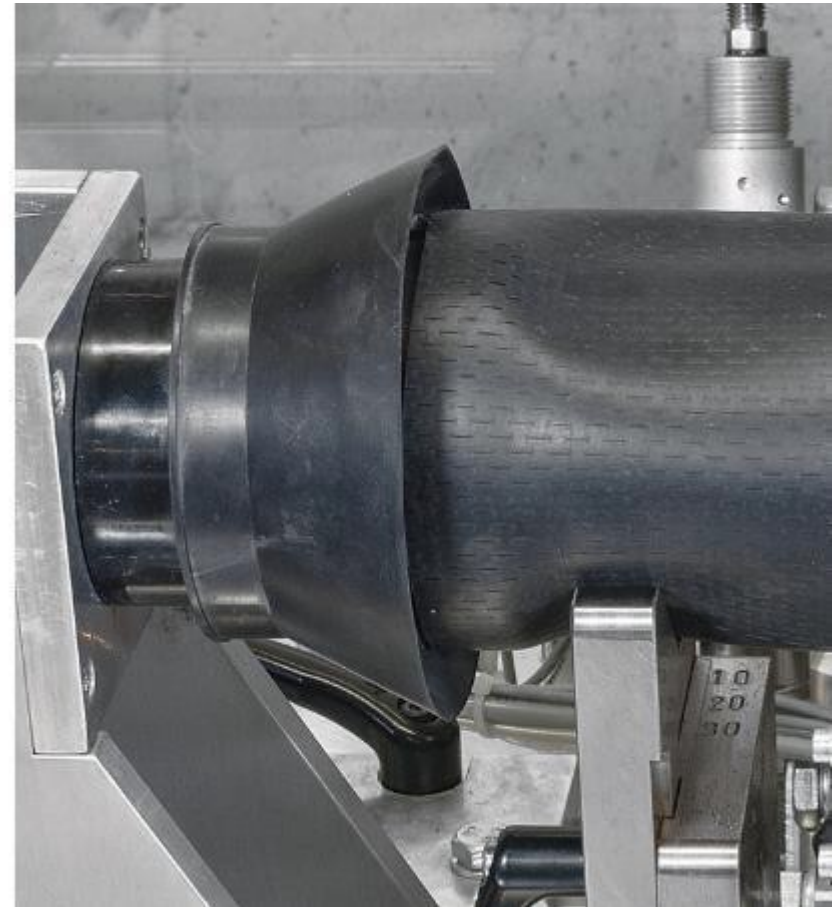
Trenchless house connection





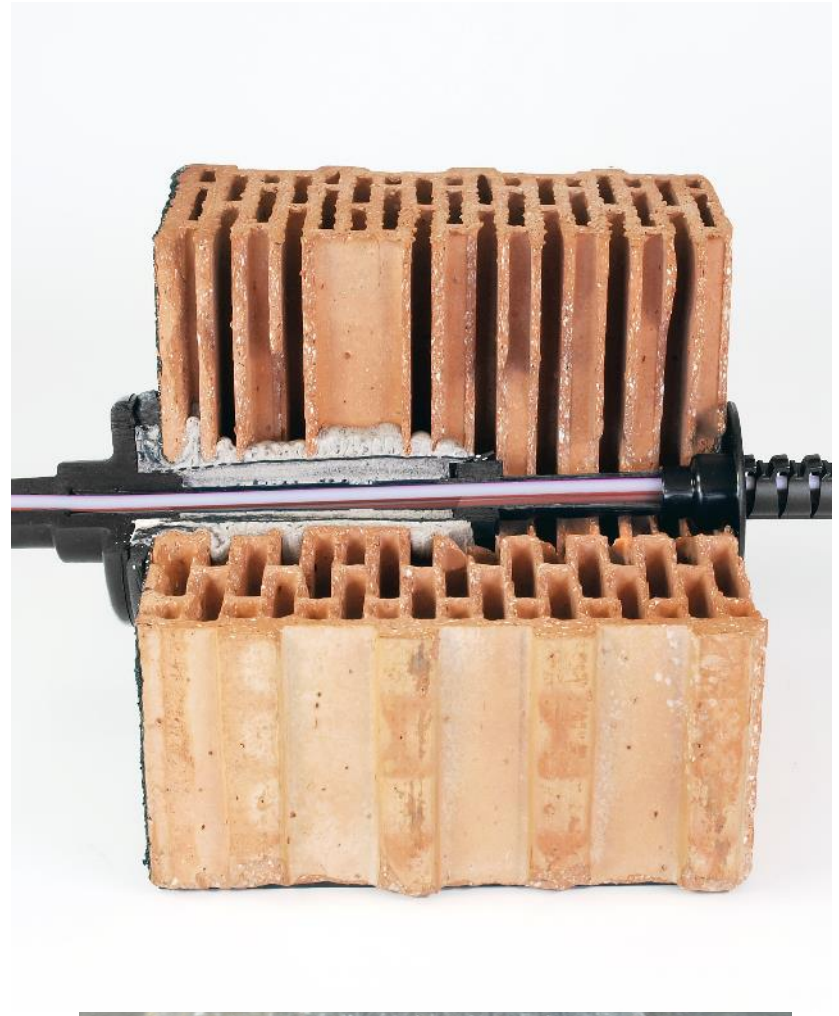
TRENCHLESS. RELIABLE. TIGHT.

Production of building entries for trenchless house connection





Competitive FTTH entries



ALWAYS. RELIABLE. INNOVATIVE. TIGHT

Whatever your requirements are



Always. Reliable. Tight.



References

REFERENCES



16.10.2018

RESIDENTIAL TOWER, DUBAI

SEALING OF WALL OPENINGS

Within the basement of the residential tower, cables with different diameters were ...



19.09.2018

QLD State Netball Stadium - Brisbane

Maintaining the integrity of waterproofing under a base slab

Electrical and data services enter the building ...



15.06.2018

IBERDROLA 275KV „WINDY HILL“ SUBSTATION

STOP WATER LEAKING INTO THE MAIN SUBSTATION

Seal cables effectively to prevent the ingress of water at the

REFERENCES



22.08.2016

Lend Lease/All Industrial Services, Barangaroo Development

Sealing of incoming conduits by Antec Group, Australia

Antec is a leading supplier of specialised commercial construction products to the fire, electrical, HVAC and waterproofing markets.

With branches in Sydney, Melbourne, Brisbane, Adelaide and Perth they provide superior ...

 [Project description \(pdf, 2 MB\)](#)

REFERENCES



14.06.2011

ZV WV Lußhardtgruppe - Waghäusel

Rehabilitation of the manholes for the main supply lines of the joint water management authority Lusshardt

Some years ago the joint water management authority Lusshardt started with rehabilitation measures for the manholes of the main supply lines to Hambruecken and ...

 [Project description \(pdf, 1 MB\)](#)

REFERENCES



MERALCO
GIS Substation projects



- BRIDGETOWN
- ETON
- MC KINLEY
- MAKATI

Always. Reliable. Tight.



Today's sealing problems

Today's problem-Sealing of Penetrations with PU Foam and or chemical sealing in general



Damage caused by animals (vermin)



Water leakages



Flooded basements / Humidity in switch-gear rooms



Aftermath of flooded basements



Typical situation:

**Preparation of wall conduits
with thin-walled PVC pipes (typically sewage pipes)**



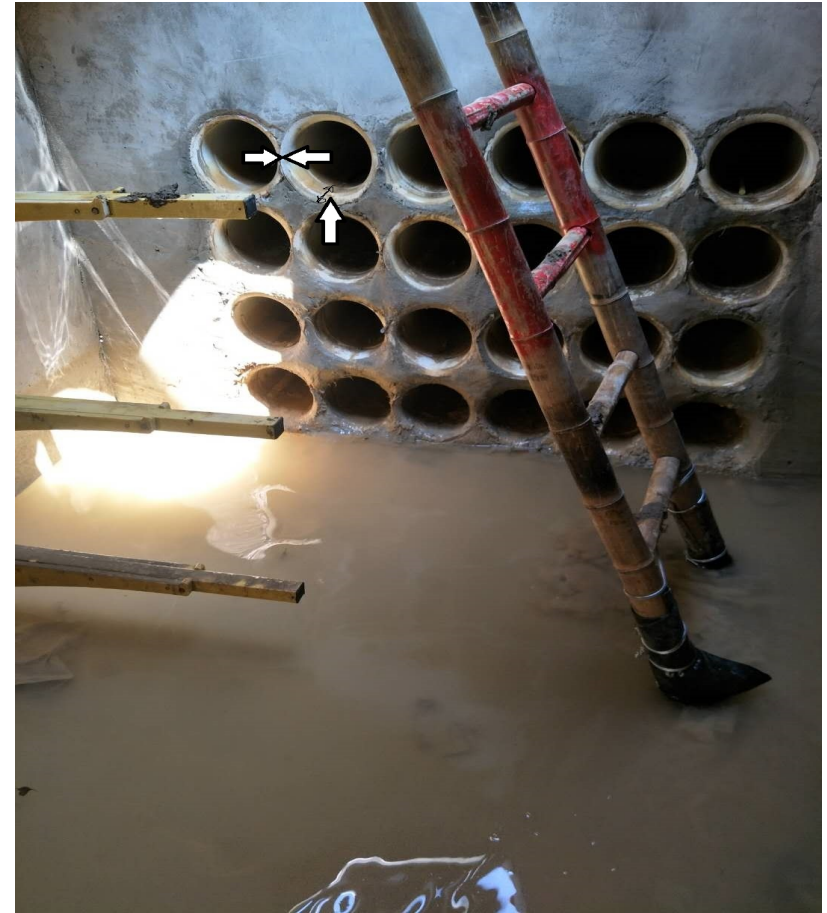
First issue: Create a hole in the wall



First issue: Create a hole in the wall

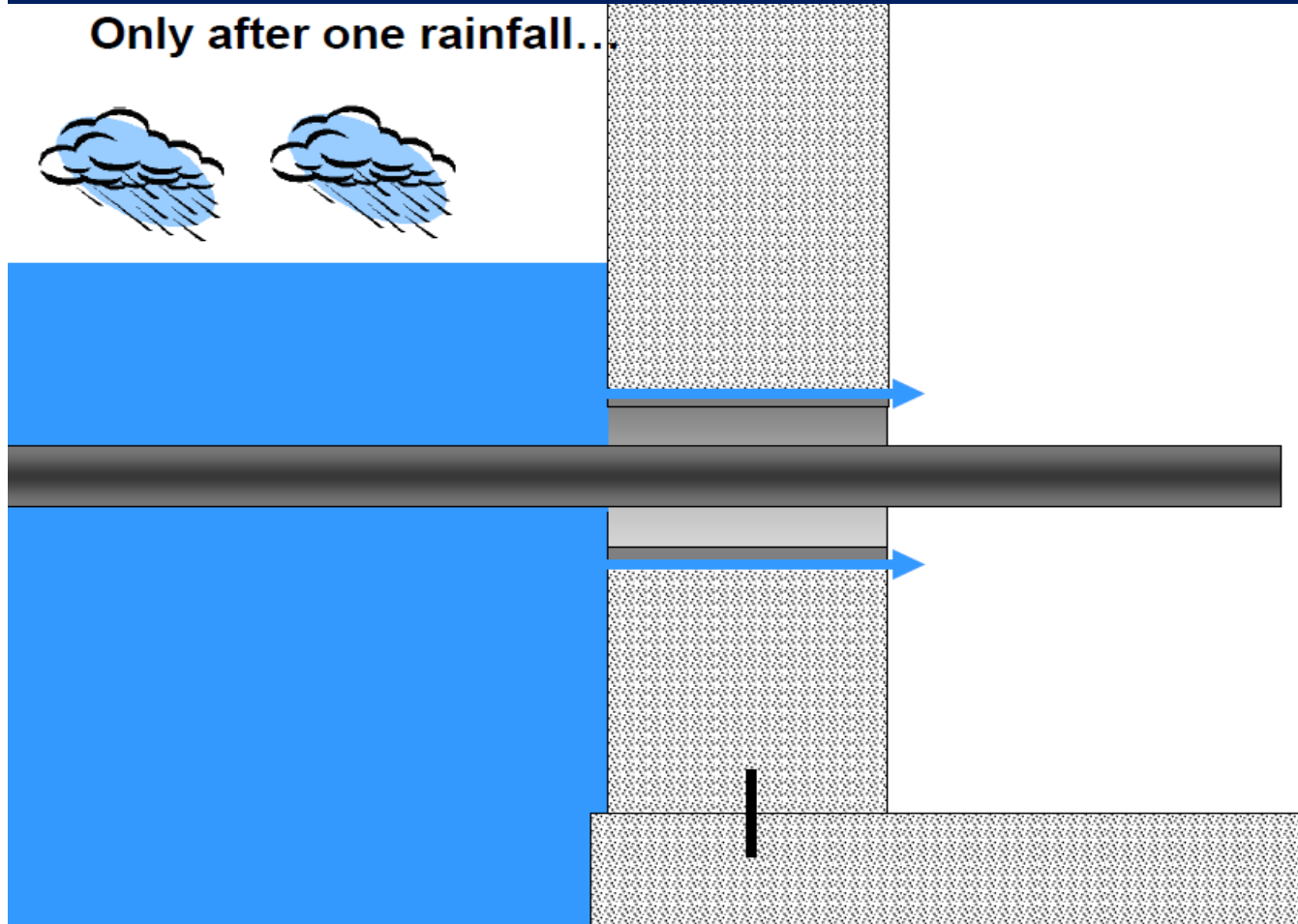


First issue: Create a hole in the wall



First issue: Create a hole in the wall

Only after one rainfall...



Hauff-Technik Sealing Systems



1. Cable Entry Systems



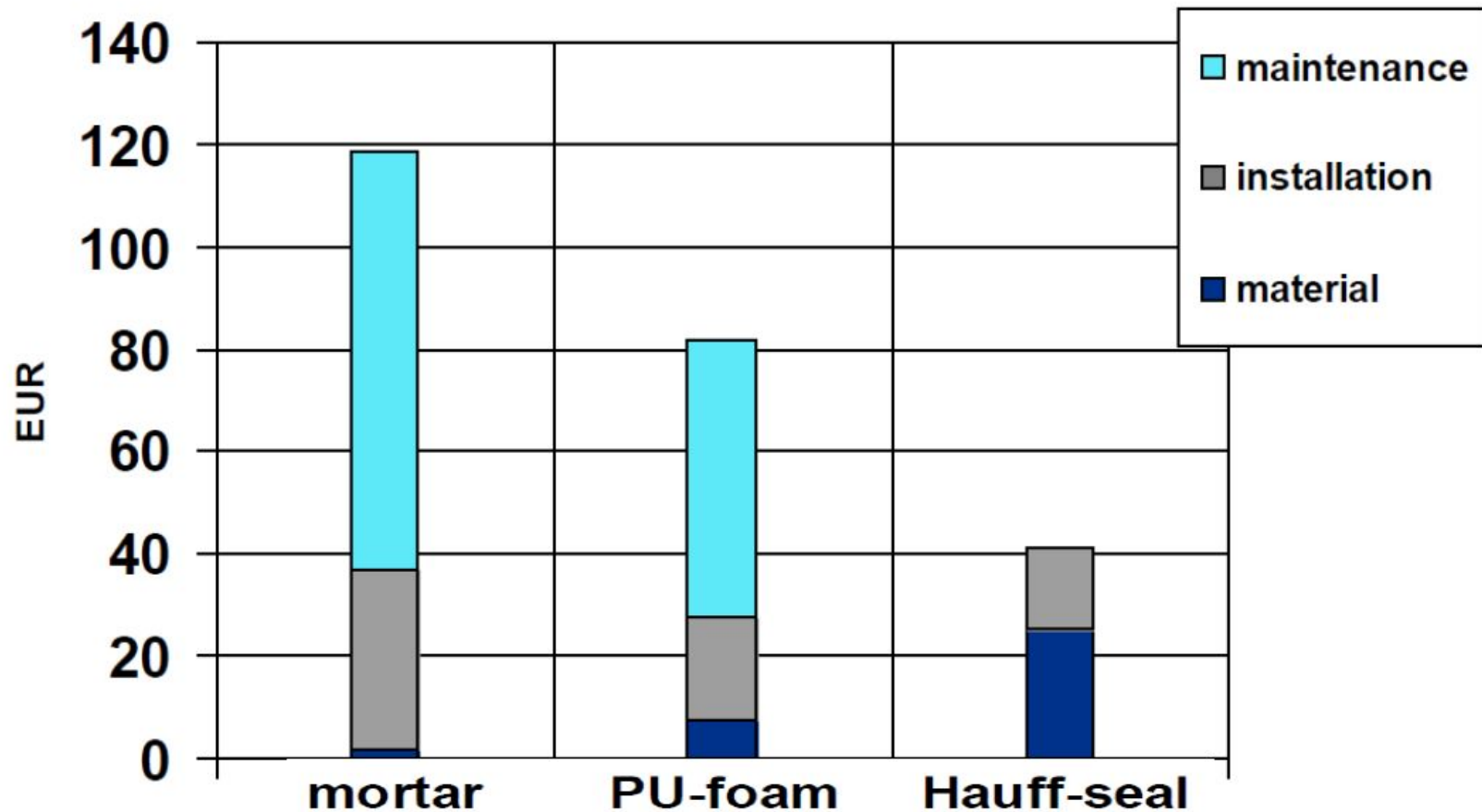
2. Rubber Press Seals

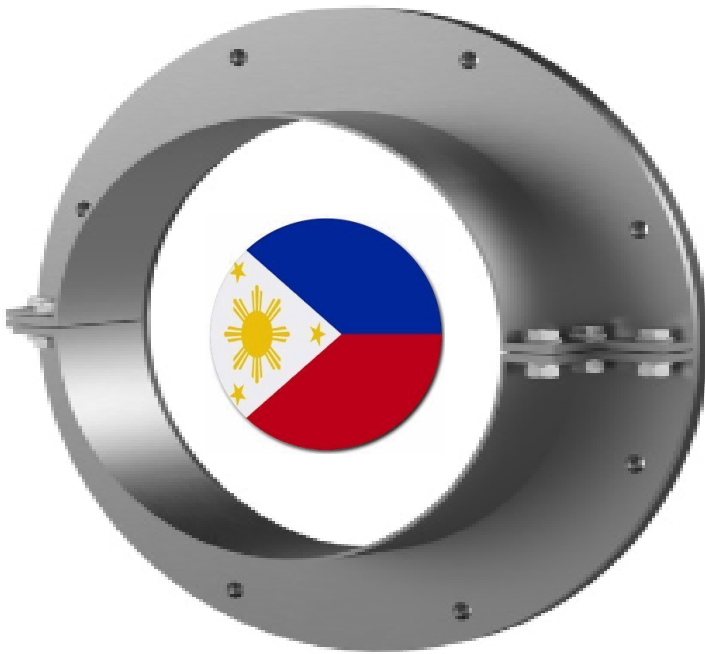


3. Modular Seals

Chemical versus Mechanical sealing

RELIABLE. CUSTOMER-ORIENTATED





HRD-FG



The future “We” will seal the Philippines

Always. Reliable. Tight.



TIGHT.CABLE.PIPE.BUILDINGENTRY.ALWAYS.RELIABLE.ALWAYS.TIGHT.CABLE.PIPE.BU
DINGENTRY.ALWAYS.RELIABLE.ALWAYS.TIGHT.CABLE.PIPE.BUILDINGENTRY.ALWAYS
BLE.ALWAYS.TIGHT.CABLE.PIPE.BUILDINGENTRY.ALWAYS.RELIABLE.ALWAYS.TIGHT.
BUILDINGENTRY.ALWAYS.RELIABLE.ALWAYS.TIGHT.CABLE.PIPE.BUILDINGENTRY.ALV
ABLE.PIPE.BUILDINGENTRY.ALWAYS.RELIABLE.ALWAYS.TIGHT.CABLE.PIPE.BUILDING
RY.ALWAYS.RELIABLE.ALWAYS.TIGHT.CABLE.PIPE.BUILDINGENTRY.ALWAYS.RELIAB
WAYS.TIGHT.CABLE.PIPE.BUILDINGENTRY.ALWAYS.RELIABLE.ALWAYS.TIGHT.CABLE
BUILDINGENTRY.ALWAYS.RELIABLE.ALWAYS.TIGHT.CABLE.PIPE.BUILDINGENTRY.ALV
AYS.RELIABLE.ALWAYS.TIGHT.CABLE.PIPE.BUILDINGENTRY.ALWAYS.RELIABLE.ALWA
E.ALWAYS.TIGHT.CABLE.PIPE.BUILDINGENTRY.ALWAYS.RELIABLE.ALWAYS.TIGHT.CA
E.PIPE.BUILDINGENTRY.ALWAYS.RELIABLE.ALWAYS.TIGHT.CABLE.PIPE.BUILDINGENT
ALWAYS.RELIABLE.ALWAYS.TIGHT.CABLE.PIPE.BUILDINGENTRY.ALWAYS.RELIABLE.A
S.TIGHT.CABLE.PIPE.BUILDINGENTRY.ALWAYS.RELIABLE.ALWAYS.TIGHT.CABLE.PI
DINGENTRY.ALWAYS.RELIABLE.ALWAYS.TIGHT.CABLE.PIPE.BUILDINGENTRY.ALWAYS
CABLE.PIPE.BUILDINGENTRY.ALWAYS.RELIABLE.ALWAYS.TIGHT.CABLE.PIPE.BUILD
NTRY.ALWAYS.RELIABLE.ALWAYS.TIGHT.CABLE.PIPE.BUILDINGENTRY.ALWAYS.RELI
ALWAYS.TIGHT.CABLE.PIPE.BUILDINGENTRY.ALWAYS.RELIABLE.ALWAYS.TIGHT.CAB
NGENTRY.ALWAYS.RELIABLE.ALWAYS.TIGHT.CABLE.PIPE.BUILDINGENTRY.ALWAYS

**ALWAYS
HAUFF**