



SuSi SuperSilent ecological small windturbine

presented by Dr. Elena + Susanne Möhring | EURO-WINDPOWER oHG

www.euro-windpower.eu / www.euro-windpower.de

SuSi SuperSilent windturbines

noiseless, sustainable, durable from ecological materials



- Farmers, owners of holiday houses, resorts, individualists, business owners, people living on islands or at the seaside have energy at hand :

WIND, WIND, WIND

- The SuSi windturbine is the low-cost, easy to build, do-it-yourself DIY wind energy collecting device, that fits perfectly into any living environment.
- It can easily be combined into hybrid-solutions with solar / PV installations.



SuSi SuperSilent – the vision, the concept, the idea

- The **vision has grown in 2011** to support developing regions all over the world with an ecological, independent and easy to build up power supply.
- Dr Moehring invented and developed the SuSi windturbine starting in year 2011
- **Since 2014 EURO-WINDPOWER oHG**, the family business of Dr Elena Möhring and Susanne Möhring - mother and daughter - further optimized and installed SuSi VAWTs
- The **Do-It-Yourself (D I Y) concept** was first tested by themselves, later with partners and clients. The „low-tech concept“ was intentionally designed as it is, to have each and any SuSi windturbine built on-site and with **local manufacturers and partners**, as „island solution“ or in hybrid-installations together with solar/PV and/or water pump systems.
- The idea and concept of SuSi windturbines was successfully registered 2014 with the Germany Patent and Trademark office.



B2B Partners and organisations worldwide will join our vision! Let us collaborate in partnership



- **We are looking for further partners**, especially small or medium sized businesses, especially family driven businesses or such run by the owners themselves, craftsmen and manufacturers:
 - **Craftsmen** of woodwork, metal design and carpenters
 - **Businesses** that are already selling products in the renewable energy area, like photovoltaic, warmth pumps and other energy products for houses, resorts, farms, decentralized locations
 - **Partners**, who share our vision to offer SuSi as an independent power supply, power back-up in cases of sudden emergency and as power supply device in case of black-outs from a grid
 - **Project Partners (NGO, schools, communities)**, whose intention is to build the SuSi with a team of young people, unemployed workers or other persons seeking a challenge and looking forward to proudly use and present the result of their own work : **The working SuSi – that is their own !**

The SuSi concept is principally not meant to be a „money making machine“ for stakeholders.

Facts and specifications of SuSi **VAWT** windturbines



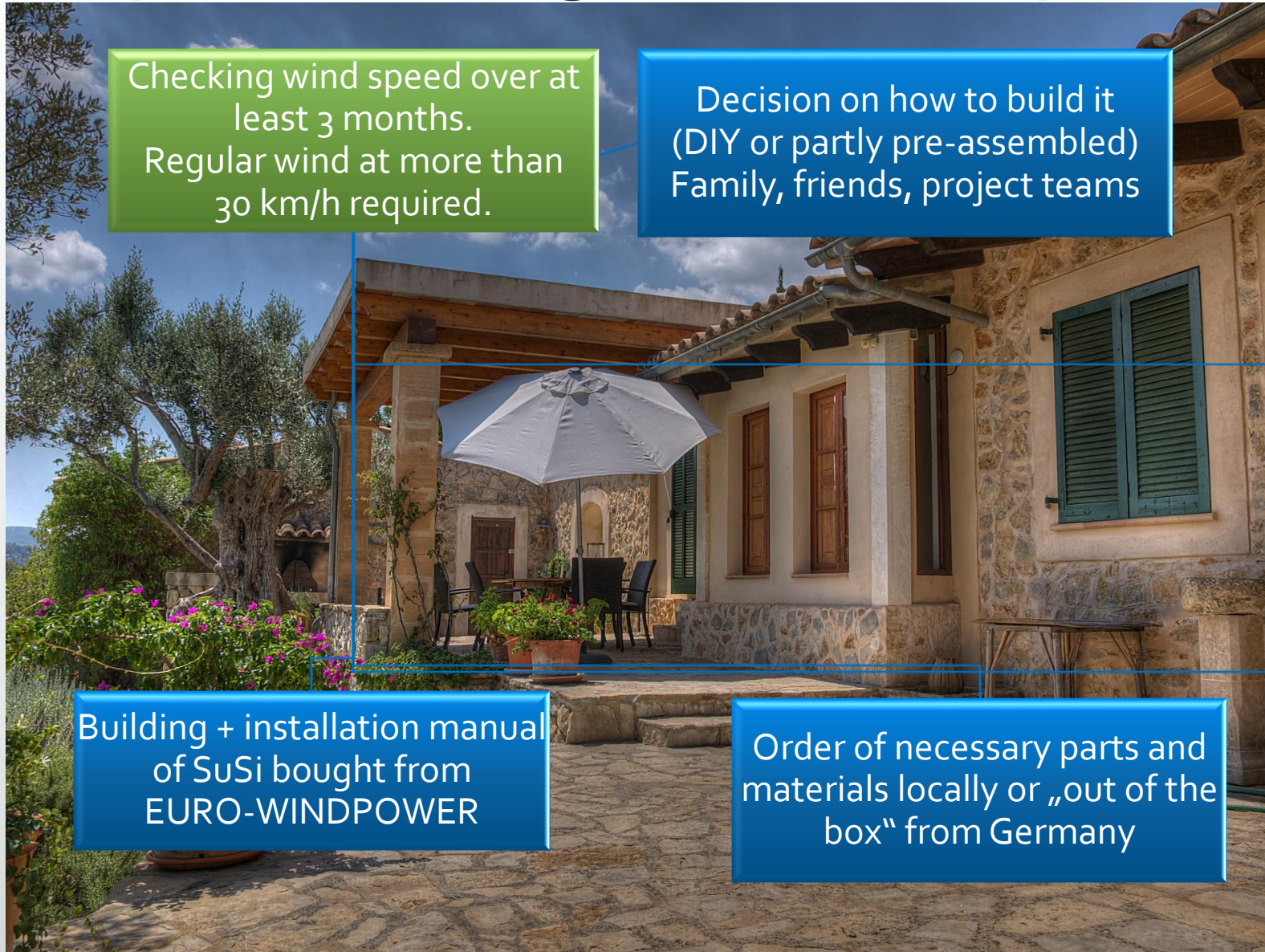
- SuSi Windturbines deliver 12V DC to be stored in batteries. From these you can easily take the power to **12V products** like lights or you **can transform 12V to 230V**. Of course you can easily attach almost any products running either on 230V AC and/or 12V DC caravanning products, both in parallel.
- As the **power is saved whenever the wind blows**, the stored in energy is not stored continuously, only when wind blows. The storage capacity of such a AGM or bigger lead battery normally should start at 120Ah and can be increased by adding batteries.
- The SuSi windturbine requires wind speed of at least **20km/h = 6m/s (cut-in speed)** to start producing power to be stored in batteries.
- The SuSi windturbines easily work together with existing renewable energy products like warmth pumps and/or photovoltaic /solar collectors (24V), in ecological projects known as „**hybrid-installations**“. **Ask for more details !**
- The SuSi windturbine is **noiseless**, made of **ecological materials** and **self-regulating** at any speed thus not have to be shut down in storms
- The SuSi windturbine has translucent blades and a **size of 1.5m width** and at **max. 10m height**.

Places for SuSi to be set up and used as decentral power supply

- **Small farms** looking for a power supply from their own storage batteries (12V DC) in case of a grid black-out
- **Remote places with self-supply** like rural areas, remote forestry houses, shelters for hikers in the mountains, surfing or golf places with frequent gathering of tourists, e.g. Extremadura
- **Small companies** that are looking for an eye-catcher spinning in the wind and showing their advertorial information
- **Camping and holiday sites**, camping sites at beaches or in mountain areas and holiday homes, that are not connected to a grid and who would like to have stored electric power for security
- **Coastal areas** with sailors' and surfers' tourism places, and scenic tourist resorts with special interest in ecological power generation and power supply, like Baleares or Canary Islands
- **Agricultural sites** in need of energy for light, cooling of food and/or water pumps without having current power supply, like hilly or mountain areas



Steps for SuSi to get to the final place to work for you !



Checking wind speed over at least 3 months.
Regular wind at more than 30 km/h required.

Decision on how to build it
(DIY or partly pre-assembled)
Family, friends, project teams

Building + installation manual
of SuSi bought from
EURO-WINDPOWER

Order of necessary parts and
materials locally or „out of the
box“ from Germany



Assembling partly
off-site by craftsmen
or partners or all on-
site

Set-up on-site and
finish within one day
with the team

Offgrid, Do-It-Yourself (DIY), one single investment



- SuSi windturbines have to be bought once. They have **no subsequent costs**. They offer **12V/24V and 120V/230V supply**. A single SuSi is suitable for one household, shed, small farm, caravan site, house, the pico-grid etc. not for community grids.
- SuSi windturbines offer **independent power supply from batteries** in **offgrid** scenarios or in **blackout** situations. They work perfectly together with PV installations that save power in the same batteries for non-continuous demand of power.
- SuSi windturbines are a **do-it-yourself concept**. They are assembled locally and **set up** manually on-site in **one day**.

Steps to get SuSi to your place in Spain mainland + islands:

Contact us

We provide the plan and details which parts are necessary

Contact local parts suppliers or us

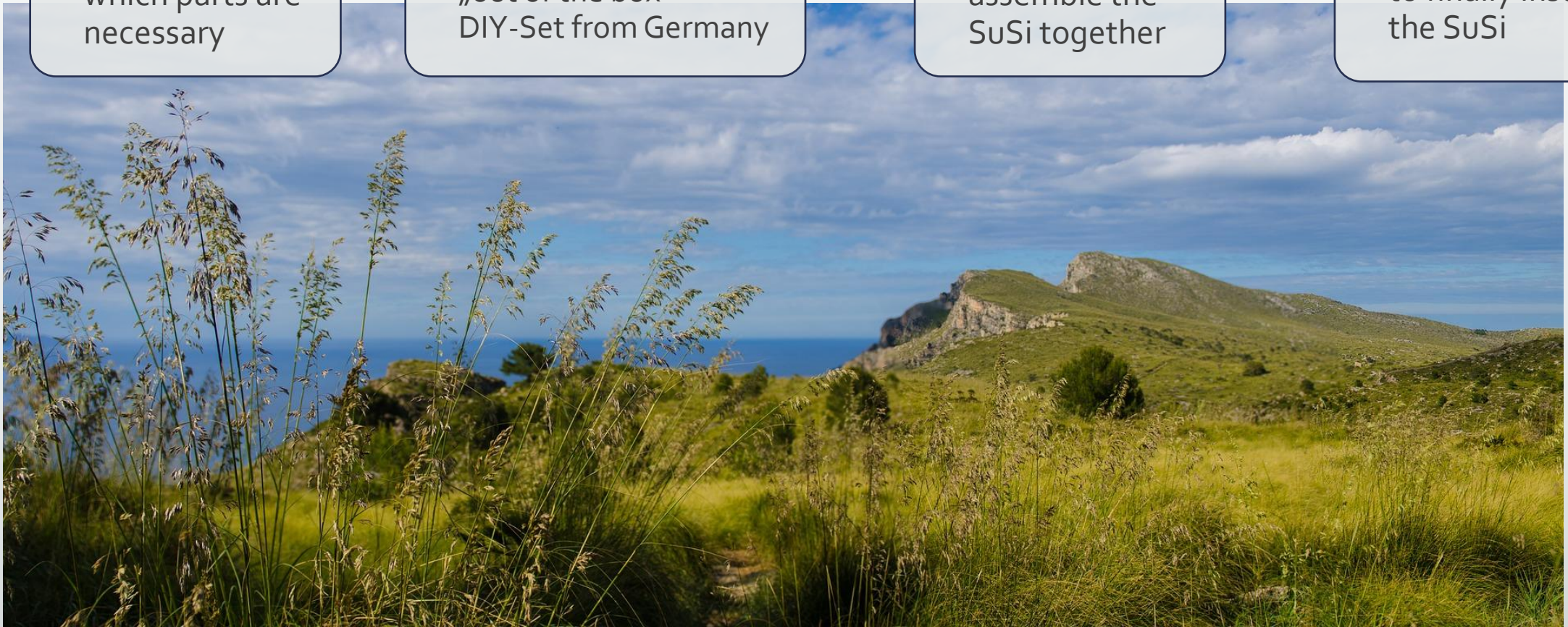
Order parts locally or the „out of the box“ DIY-Set from Germany

Build the team

Decide which persons will assemble the SuSi together

Install the SuSi

Choose one day with low wind to finally install the SuSi



Contact us for further information

- SuSi windturbines can be used as stand-alone and independent power supply, as well as part of a whole energy concept at your place.
- Ideal for most ecological projects!
NGO and governmental projects welcome.
- **Ask for further information
on how to implement it at best into
your idea, your concept or your project.**
- **Feel free to ask any questions!**
- Thank you for taking the time and listening.
- Yours Dr. Elena + Susanne Möhring



Contact information :

- Online :
<https://www.euro-windpower.de> (German)
<https://www.euro-windpower.eu> (International)
- Address :

EURO-WINDPOWER oHG
Kohlstattstr. 22
D-94146 Sonndorf – Bavaria
- Mail : elena.moehring@euro-windpower.com
susanne.moehring@euro-windpower.com
- By phone :
+49 8551 9139404

English and German spoken support

▪ Images shown by Adobe Stock (Buffaloboy, agency photographer, yosarlan6, Lorenzo_Ferrucci, kasto) and from Pixabay and © EURO-WINDPOWER oHG