



**“The Importance of Synergies in the Development of
Contemporary Shipping”**

Speaker: ELIAS HAJIEFREMIDIS, President of W.I.M.A.

ABOUT US

- **Non Profit Maritime Association Founded in 2006**
- **63 Certified Member-Companies With Global Reach**
- **Successful Completion of Collective Turn-Key Refit Projects**
- **Collective Participation in International Maritime Events**
- **Promoting Each Others' Activities**
- **Sharing Important Market Information**
- **Sharing Technical Know-how and Innovative Ideas**

BOARD OF DIRECTORS



ELIAS HAJIEFREMIDIS
PRESIDENT



ANGELOS DRAKOPOULOS
VICE PRESIDENT



THANASIS ATHANASSOPOULOS
SECRETARY GENERAL



ZOE CHASSOURA
TREASURER



IOANNIS KORDATOS
PUBLIC RELATIONS



DIMITRA GIORDAMLI
INTERNATIONAL RELATIONS



SOFOKLIS KOKKINIS
DEPUTY SECRETARY
GENERAL

ADVANTAGES FOR OUR MEMBERS

- **Economy of Scale**
- **Timely information on ongoing projects or future projects in the field of shipping**
- **Improving and developing the extroversion of our members in the international market**
- **Promoting members' activities with targeted actions**
- **Exchange of information and “know-how” between members**
- **Collective participation in international exhibitions**
- **Direct access to government bodies, institutions and public organizations**

SHIP REPAIRS



Pipeworks

Specialized Marine Cleaning

Steel Works / Industrial Constructions

Marine Maintenance

Ventilation, Design & Construction

Lifeboat Inspections & Cargo Gear Testing

Ultrasonic Measurements & Rope Access



SHIP REPAIRS / OUTFITTING

Panels – Doors – Ceilings

Elevator & Escalator Systems Manufacturing & Trade

Marine Insulations

A/C Systems & Refrigerators for Mega-Motor Yachts

Yacht Cleaning Services

Indoor-Outdoor IMO Fabrics – Shading Systems

ELECTRICAL / AUTOMATION



Temperature Sensors, Level Switches,
Instrumentation, Automation & Drives

Electric & Automation Services

Cables, Electrical / Electronic Materials &
Components

Maritime Satellite & Communication , VDR

Marine Lighting

Fire Detection & Emergency Lighting

Remote Condition Monitoring & Performances
Analysis System



EQUIPMENT MANUFACTURERS

The background image shows the interior of a ship's engine room. It is filled with a complex network of white-painted pipes, metal brackets, and various mechanical components. In the foreground, there are blue electric motors and a large white conical structure, possibly a fan or part of a pump system. The floor is made of metal grating. The overall lighting is industrial and somewhat dim, with some brighter areas where lights are visible.

Service Deck Air Compressors

Ballast Water Treatment Systems (BWTS)

Heat Exchangers

Refrigeration, Air-Conditioning Systems (HVAC)

Marine & Industrial Pollution Control -
Oil Spill Response

Pumps & Pumping Systems

Industry of Gases for Marine & Health Sectors

Expansion Joints & Fan Impellers for Marine &
Industrial Sector



MARINE EQUIPMENT PARTS & SERVICES

A close-up photograph of a large, dark metal industrial gear. A bronze-colored bushing is mounted on the gear's surface. Several bolts are visible, securing components. The gear has a series of teeth along its outer edge.

Marine Bearings, Seals , Condition Monitoring

Electrohydraulics – High & Low Pressure

Machine Shop – Marine & Industrial Repairs

Hydraulic Systems & Cylinders

Rubber Technologies Industry

Manufacturing & Overhauling of Fuel Injection
Systems & Governors

Marine Spare Parts Supply & Services

SHIP SERVICES / HR

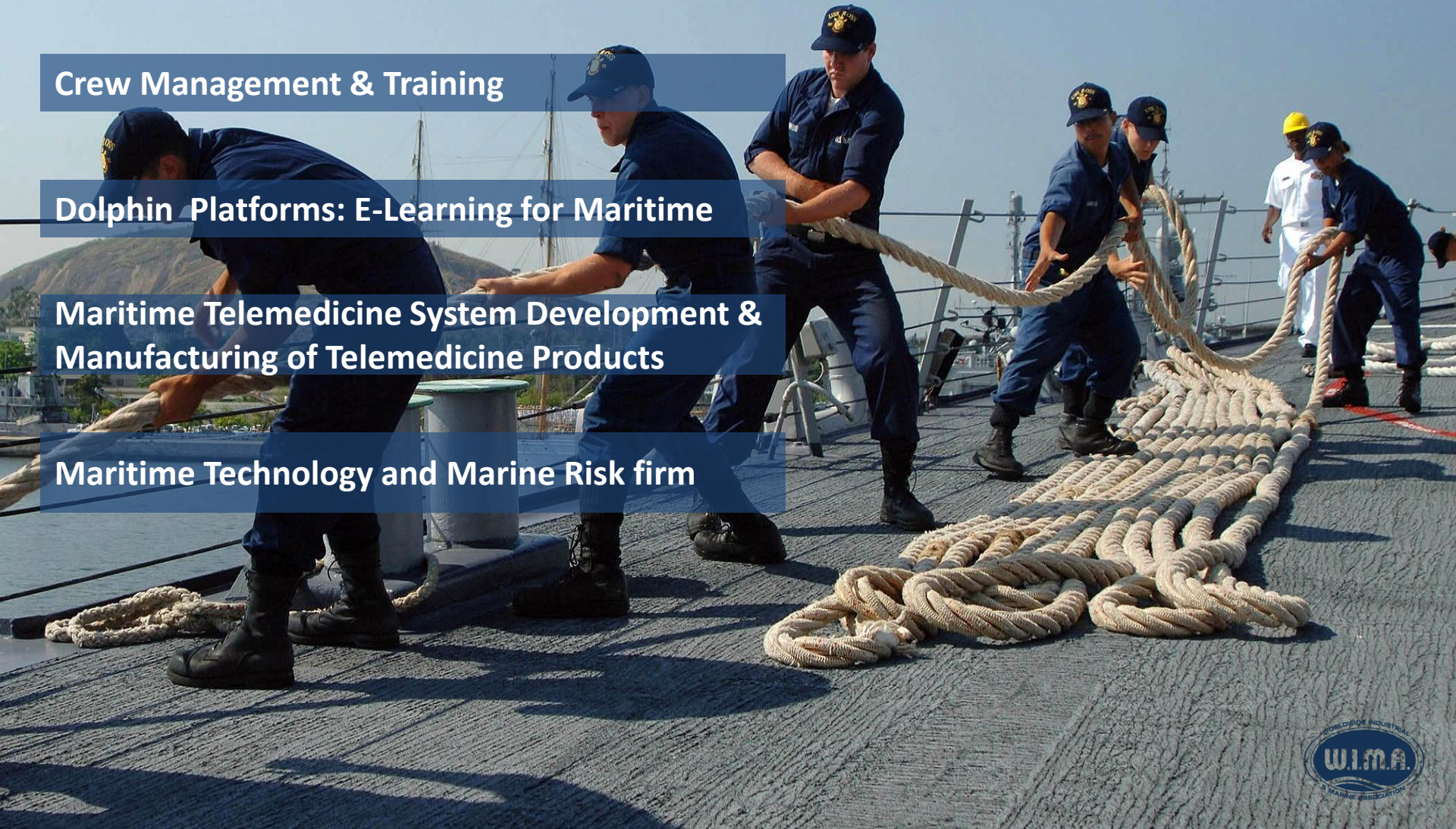
Crewing Services

Crew Management & Training

Dolphin Platforms: E-Learning for Maritime

Maritime Telemedicine System Development &
Manufacturing of Telemedicine Products

Maritime Technology and Marine Risk firm



SUPPLIES

Chemical Products

Ship Supplies (Foodstuff)

Manufacturers of Mooring Ropes & Wire Ropes

Ship Supplies, Worldwide FRS Services

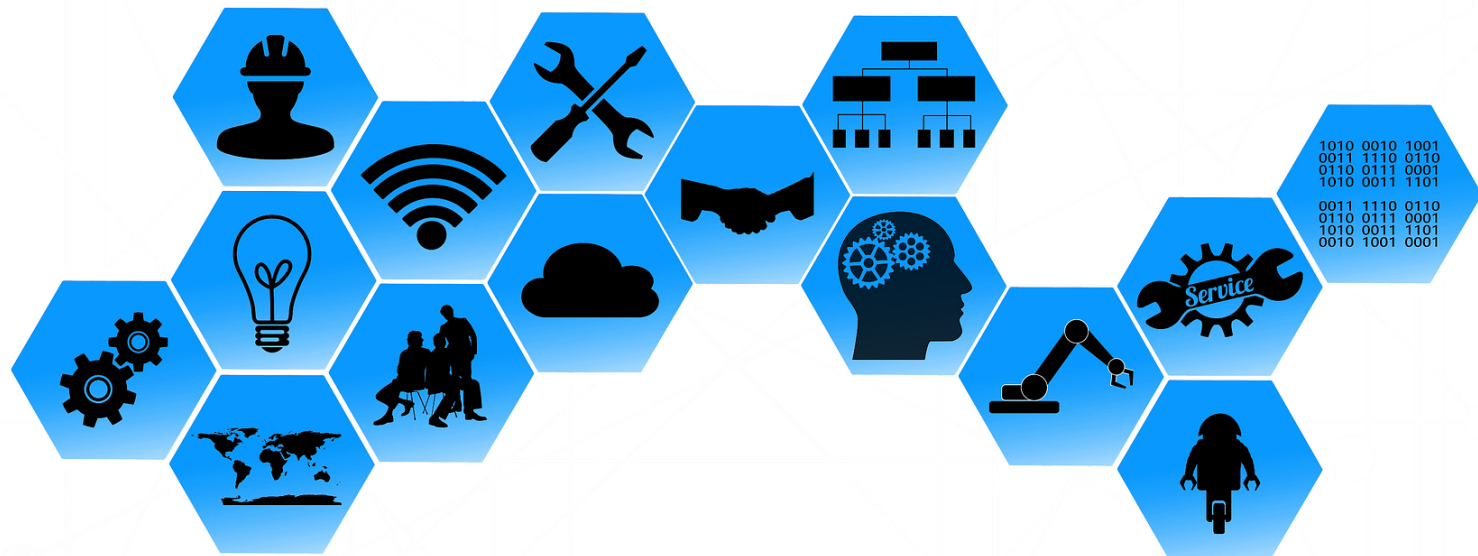
Personal Protective Equipment

Manufacture of Pilot & Embarkation Ladders

SHIP SERVICES

- ☐ Welding Education & Training Material & Welding Consultancy
- ☐ S&P Chartering and Consultancy Services
- ☐ Shipping Agency
- ☐ Maritime Law Services

- ☐ Naval Technical Bureau
- ☐ Classification Society, Statutory Certification Ships' Surveys
- ☐ Bunkering / Lubricant Trading
- ☐ Shipping Publication



- ☐ Fumigation, Pest – Control, Disinfection, Inspection, Pest – free Certification
- ☐ Marine Logistics
- ☐ Tax Consulting

- ☐ Freight Forwarders, International Transports
- ☐ Customs Brokers
- ☐ Insurance Brokers
- ☐ Travel Agency

WIMA PROJECT TIMELINE

WIMA
IS ESTABLISHED

REFIT OF PASSENGER
VESSEL "AMET
MAJESTY" - FOR
INDIAN OWNERS

~ €1.000.000 Project
Budget

REPAIRS OF ROPAX
"PANTOKRATOR" –
FOR INDONESIAN
OWNERS

~ €800.000 Project
Budget

REFIT OF ROPAX
"CORSE" FOR
FOREIGN OWNERS

~ €7.000.000 Project
Budget

REFIT OF ROPAX
"SUNNY" FOR
FOREIGN OWNERS

~ €6.000.000 Project
Budget

REFIT OF ROPAX
"ELYSSIA" FOR
INDONESIAN OWNERS

~ €2.200.000 Project
Budget

OUR MISSION



*WE WORK TOGETHER TO EFFECTIVELY COVER
ANY REQUIREMENT IN EVERY SECTOR OF THE
SHIPPING INDUSTRY*

TRUST THE
GREATEST
NETWORK OF
COMPANIES IN
THE MARINE
INDUSTRY

THANK YOU
FOR YOUR
ATTENTION



