



RAIL SYSTEMS

ACTIVE FIRE PROTECTION

GAËL WYSSEN

Area Sales Manager Rail Systems

# ABOUT FOGTEC

- Owner-managed, founded 1997
- 180 people from more than 20 countries, 40 Mio. €
- Headquarter Cologne
- Sites in Mumbai, Shanghai, Vienna, Coquelles
- Experts in Research, Development and Engineering of complex fire protection solutions
- Full portfolio incl. engineering services, validation and testing
- Market leader in rolling stock application and underground infrastructures



# OUR BUSINESS UNITS

## FIXED SYSTEMS



High Pressure Water Mist Systems offer a optimized protection for buildings, machines and industrial applications

## RAIL SYSTEMS



Fire detection and fire fighting systems specially developed for rolling stock applications.

## TUNNEL SYSTEMS



Automatic fire fighting systems in tunnels increase the level of safety and availability considerably

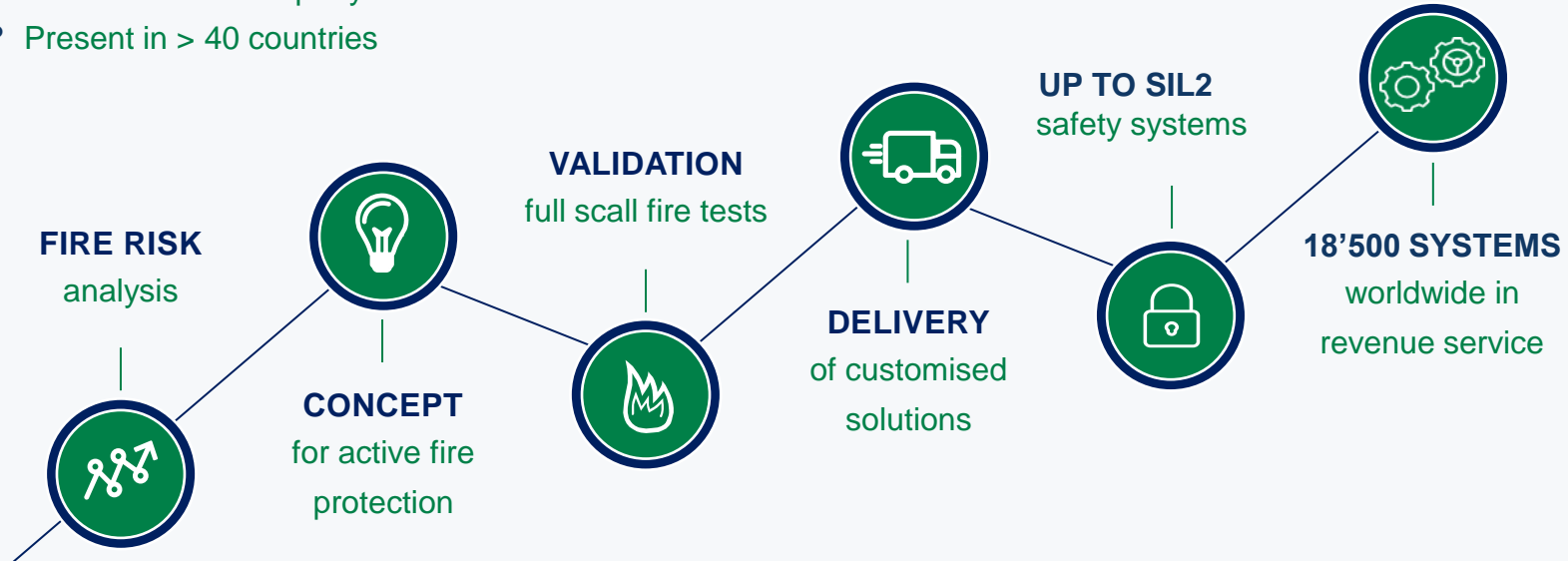
## NEW ENERGY CARRIERS



Energy storage systems, production areas for electric vehicles, hybrid traction vehicles or parking areas with charging stations

# FOGTEC IN A NUTSHELL

- 4 business units: **RAIL, TUNNEL, STATIONARY, NEC**
- **WORLD MARKET LEADER** for railway applications
- **IRIS** certified, ISO 9001, EN 15085-2
- Private owned company
- Present in > 40 countries

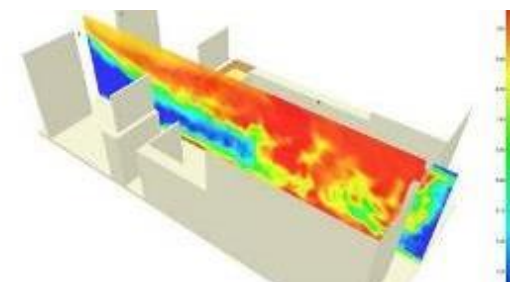
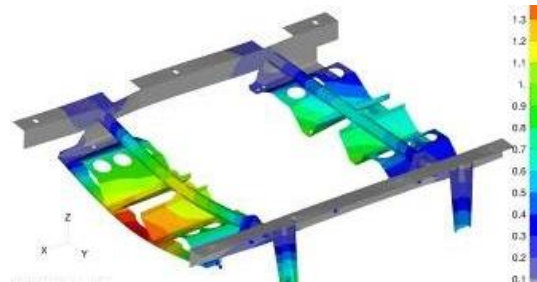
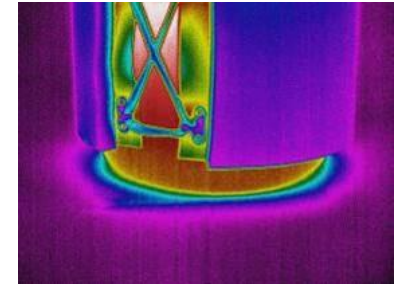


# CONSULTING

**IFAB**



- Fire Risk Analysis
- Fire Safety Concepts
- Full scale fire tests
- Feasability studies
- Fire protection engineering



# FIRE DETECTION SOLUTIONS

FOGTEC supplies several types of

- Central Units
- Smoke Detectors
- Heat Detectors
- Combined Detectors
- Linear Heat Detectors
- Smoke Aspiration Systems
- Gas Sensors
- Multi-Input/Output Modules

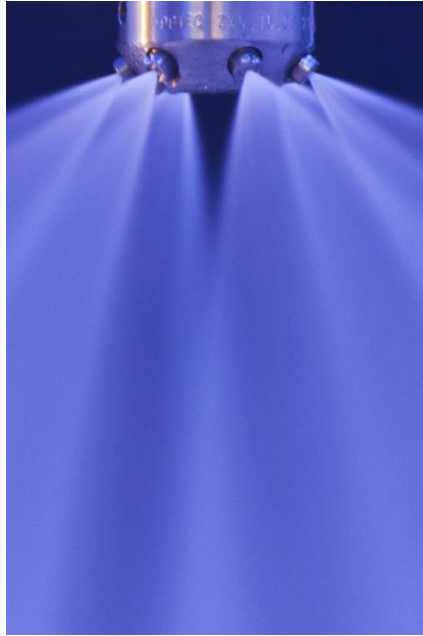
on different technical and safety levels in accordance to the specific project requirements

**From Basic Integrity up to complete SIL2 solutions**

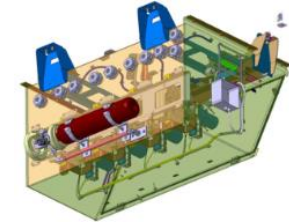




# FIRE SUPPRESSION SOLUTIONS



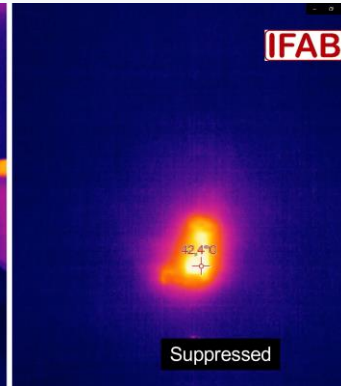
- Gas systems (nitrogen)
- Aerosol systems
- Water Mist systems
- Combined solutions



# WHAT'S COMING NEXT?

e-mobility from a different perspective – e-bikes@trains

- New Energy Carriers and related risks for railway operators and users
- Specific risk analysis and holistic approach is needed, if e-bikes will be allowed on trains.
- How to control the status of the bikes?
- Fire is may not the most dangerous to take care about: e.g. smoke / projectiles



*designed for rail*





---

THANK YOU!

**Gaël Wyssen**

Area Sales Manager – Rail Systems



Mobile: +49 162 200 23 47



[gael.wyssen@fogtec.com](mailto:gael.wyssen@fogtec.com)



[linkedin.com/in/gael-wyssen](https://www.linkedin.com/in/gael-wyssen)



[www.FOGTEC.com](http://www.FOGTEC.com)