

RENEWABLE ENERGY FOR YOUR COMPANY

PV² | ENERGIE



PV² Energie

- Headquartered in Goch, Germany
 - Solar, wind and bioenergy business since 2005
 - Started RE business in the Philippines in 2014 with offices in Alabang
 - Supported by the German renewable energy export program
-

OUR CORE COMPETENCIES

PLANNING

The first step is to calculate the economic efficiency of the renewable energy project. The calculation is based on the local conditions of the land / roof, weather conditions, your individual power consumption patterns and prices, the complexity of the connection with the grid and the individual financing terms and conditions.

PV² Energie will advise you on the selection of the technical components as well as on the coordination of the modules, inverters and substructures to ensure the reliable and profitable operation of your renewable energy power plant.

FINANCING

Each project we build is unique. We develop an individual financial scheme for every power plant, taking into consideration factors, like material, weather conditions, location and the investor's financial background. Our financial experts have long-term experience in the project financing of renewable energy systems and have access to a constantly expanding network of banks and investors.

COMPLETION

The technical installation of the project requires the coordination of various suppliers, structural processes and logistics functions. Working with you as the proprietor, we will stipulate the positioning of the inverters and the cable routing to the grid connection point. We will also handle all legal aspects, from setting up and equipping the construction site to the installation of the network connection, ultimately leaving you with a clean construction site.

SECURING SUCCESS

An ingenious system for technical monitoring guarantees the long-term performance of our renewable energy systems. Regularly scheduled maintenance of your power plants plays a key role in terms of technical operations management.

REFERENCE PROJECTS IN THE PHILIPPINES



1) Bengar Industrial Corporation

Location: Quezon City

Size: 100 kWp Net Metering

Commissioning: February 2016



2) Oriental Tin Can & Metal Sheet

Location: Quezon City

Size: 623 kWp

Commissioning: 2016



3) Sanitary Care Products

Location: Mabalacat, Pampanga

Size: 120 kWp

Commissioning: 2016



Reference Projects in the Philippines



4) Uratex

Location: Muntinlupa City

Size: 500 kWp

Commissioning: 2017

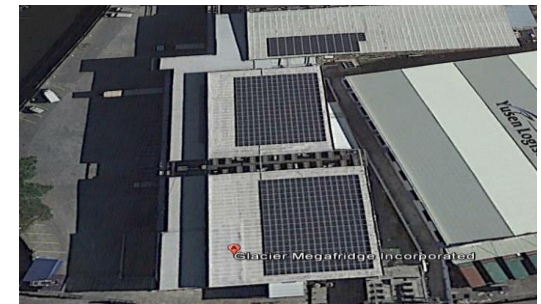


5) Glacier South Refrigeration Services

Location: Paranaque City

Size: 180 kWp

Commissioning: 2017



6) Sanitary Care Products

Location: Taguig, Metro Manila

Size: 100 kWp

Commissioning: 2017





7) Sanitary Care Products

Location: LapuLapu City,
Metro Manila

Size: 100 kWp

Commissioning: 2017



8) Dualtech Training Center Foundation

Location: Calamba Laguna

Size: 100 kWp

Commissioning: 2018



9) CDO Foodsphere, Inc.

Location: Valenzuela City

Size: 100 kWp

Commissioning: 2018





10) General Milling Corp.

Location: Lapu-Lapu City, Cebu

Size: 70 kWp (Phase 1)

Commissioning: March 6, 2019



11) Sanitary Care Products

Location: Dagupan, Pangasinan

Size: 100 kWp

Commissioning: 2019



12) Sanitary Care Products

Location: Opol, Cagayan de Oro

Size: 100 kWp

Commissioning: 2019





13) Robinsons Place Pangasinan

Location: Calasiao, Pangasinan

Size: 1,200 kWp

Commissioning: Q2 2019



14) Robinsons Place Ilocos Main

Location: Laoag, Ilocos Norte

Size: 1,100 kWp

Commissioning: Q2 2019



15) Robinsons Place Ilocos Expansion

Location: Laoag, Ilocos Norte

Size: 700 kWp

Commissioning: Q2 2019





Total: 4.2 MW

Signed; for delivery in 2019

Wilcon Depot Inc. (12 stores)

Projects 16 – 27

➤ Libis (Head Office)	650 kWp
➤ Valenzuela	250 kWp
➤ Santa Rosa, Laguna	550 kWp
➤ Calamba, Laguna	216 kWp
➤ San Pablo, Laguna	220 kWp
➤ Talisay Cebu	330 kWp
➤ Dasmarinas, Cavite	280 kWp
➤ Bacoor, Cavite	450 kWp
➤ Sucat, Paranaque	250 kWp
➤ San Rafael, Tarlac	250 kWp
➤ Villasis, Pangasinan	350 kWp
➤ Mexico, Pampanga	400 kWp

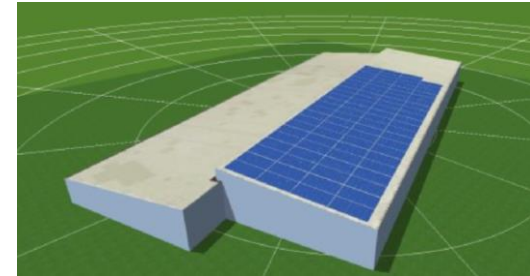
Reference Projects in the Philippines

Signed; soon for construction:



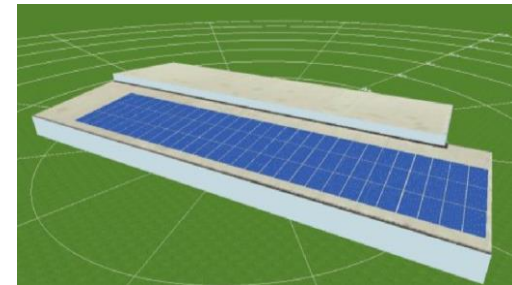
28) REBISCO - Agri Pacific Corp.

Location: Tanza, Cavite
Size: 1,400 kWp



29) REBISCO - Southfresh Bakers Inc.

Location: Tanza, Cavite
Size: 800 kWp



30) Roberts Automotive (Uratex Group)

Location: Canlubang, Laguna
Size: 400 kWp



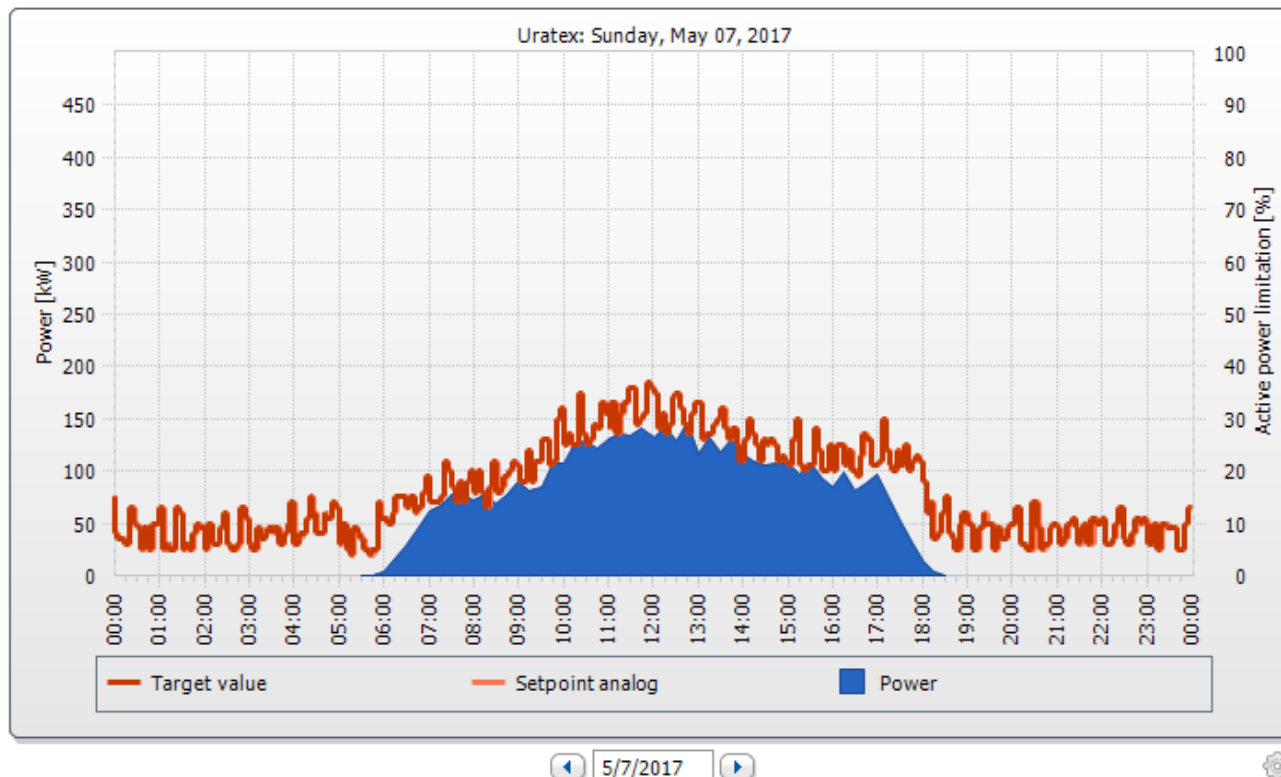
WHY CHOOSE PV2 ENERGIE?

- PV² **patented** *super solid installation system*
Optional feature that allows super strong fixation directly to trusses and avoiding weight addition to the purlins



- *PV² Automatic power management system*

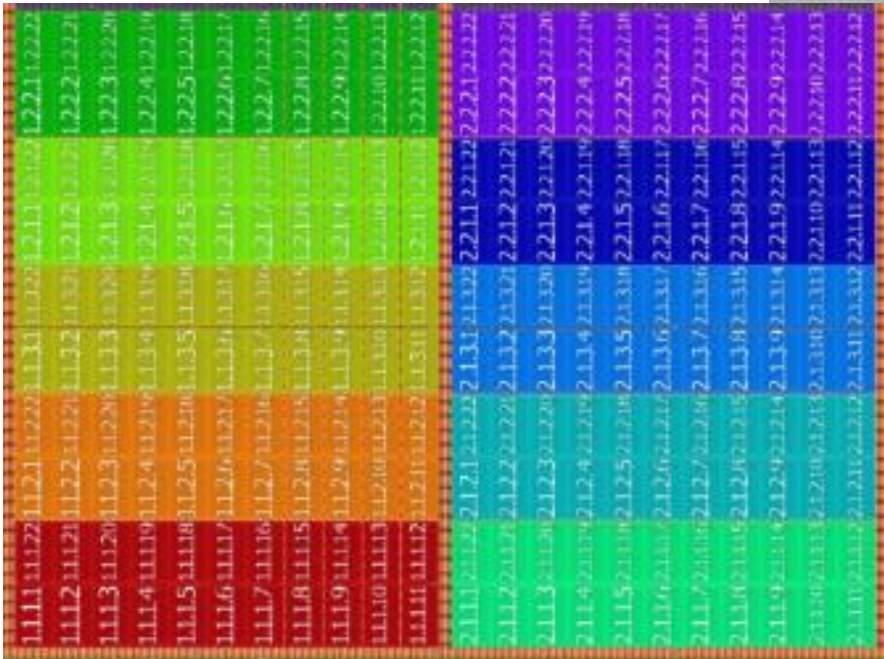
Option that allows to automatically adjust systems production of the PV system to the factory's consumption. Therefore the system avoids automatically feeding electricity into the grid to cope with the requirements of your DU.



- Quality wiring and cable protection keeping system maintenance cost down long term



-



- Onsite supervision of German and Filipino PV² Engineers with over 10 years' combined experience in installing solar rooftop systems, supervising the local installation teams.



- Local after sales service with service teams in Luzon, Visayas and Mindanao region.



*Thank you for
your attention!*



Brenda Baylon
General Manager
PV² Energie Phils., Inc.
Tel. (+63 2) 893-3886
Mobile: (+63 917) 704-4532
Email: baylon@pv2energie.de
Web: www.pv2-solar-Philippines.ph
