

A line of ball valves and ideas

Rötelmann GmbH

Ludwig Kirchhoff-Stewens

0819





Markets



hydraulics



defense



automotive



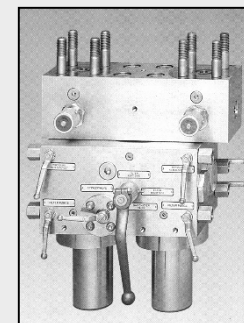
oil & gas



shipbuilding



wind energy



gas applications



construction machines



agricultural industry



paints and coatings



2-way ball valves

Multi-way ball valves

Ball valve-combinations

Ball valves for instrumentation technology

Valves

Attachments, accessories

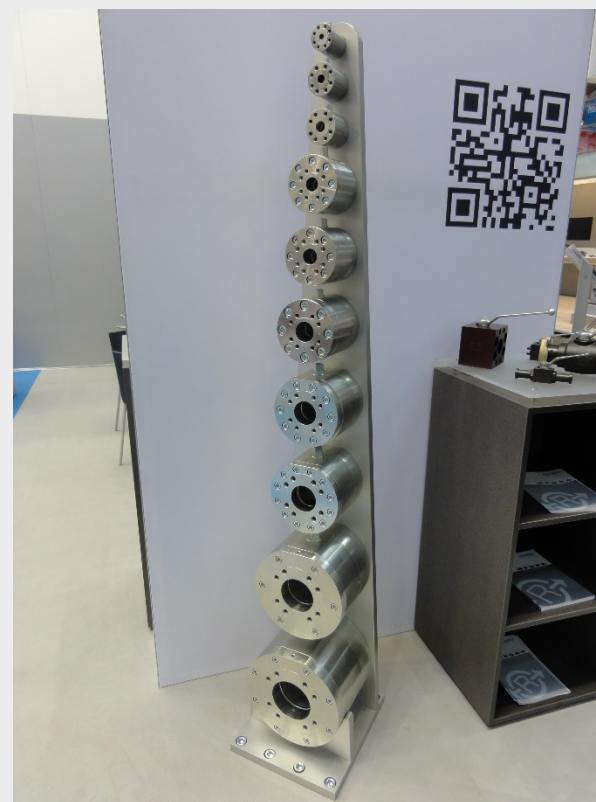
NEW: Hydraulic actuators RSI

Special ball valve systems



2-way ball valves

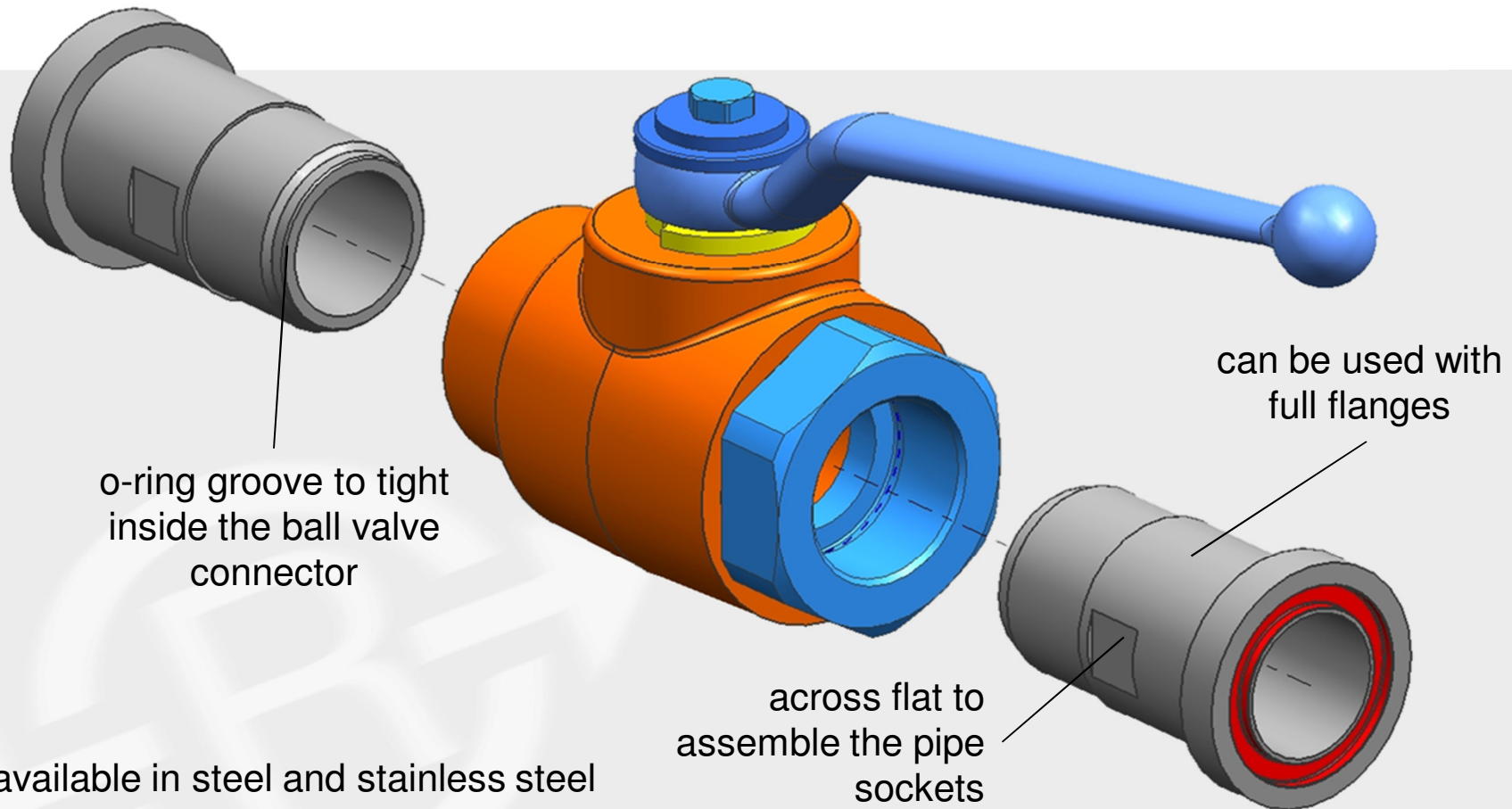
- with threaded connector
- with flange connection
- with welding-end
- with staple-lock connector
- for manifold mounting





Ball valves with flange connection

2-way ball valves with flange head DN 32 – DN 50

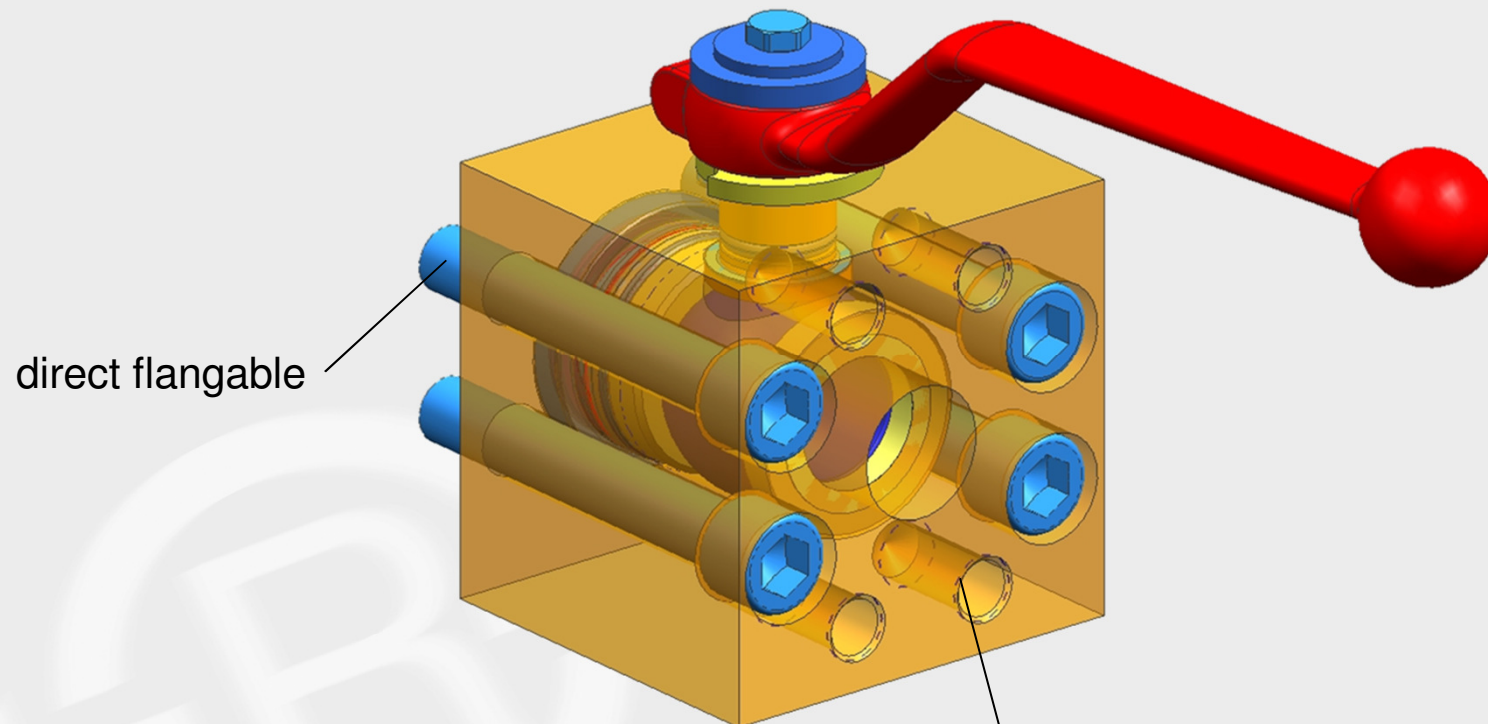


- available in steel and stainless steel
- flange kits also available



Ball valves with flange connection

2-way ball valves direct flangable DN 13 – DN 76



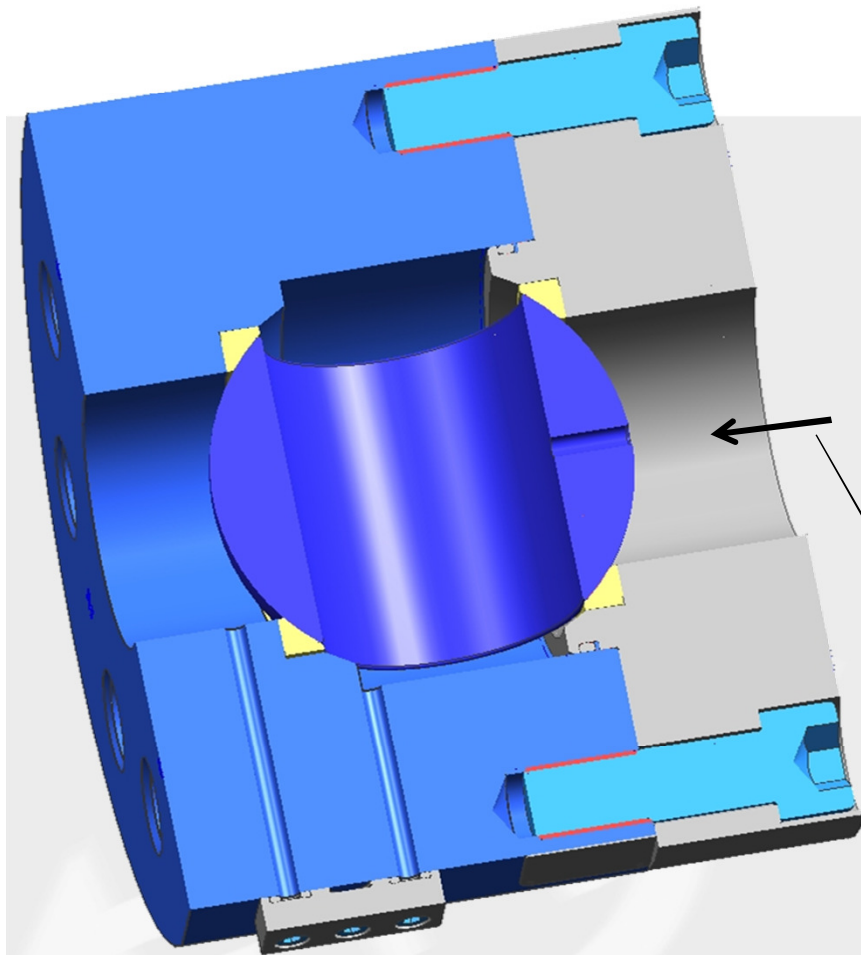
direct flangable

standard series only available
with ISO 6162-2 connection



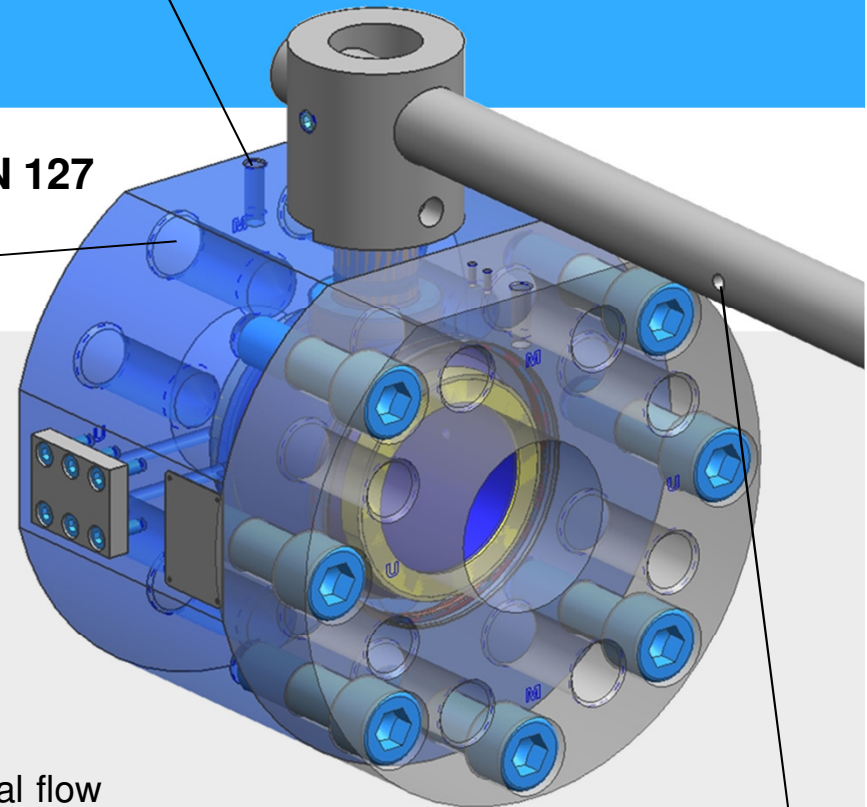
Ball valves with flange connection

2-way ball valves (prepared for bypass) DN 64 – DN 127

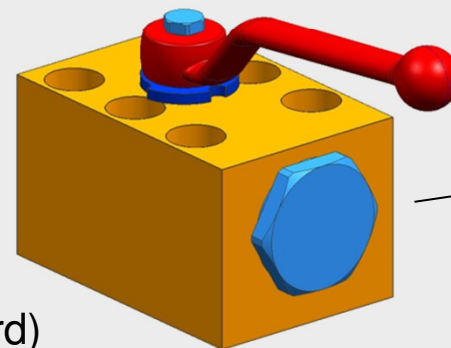


unidirectional flow

metric and UNC thread
in the same body!



handle can be assembled
differently



standard 2-way ball valve
DN 6 for manifold mounting
can be used as bypass

all ball valves > DN 51 are zinc coated (standard)



Multi-way ball valves

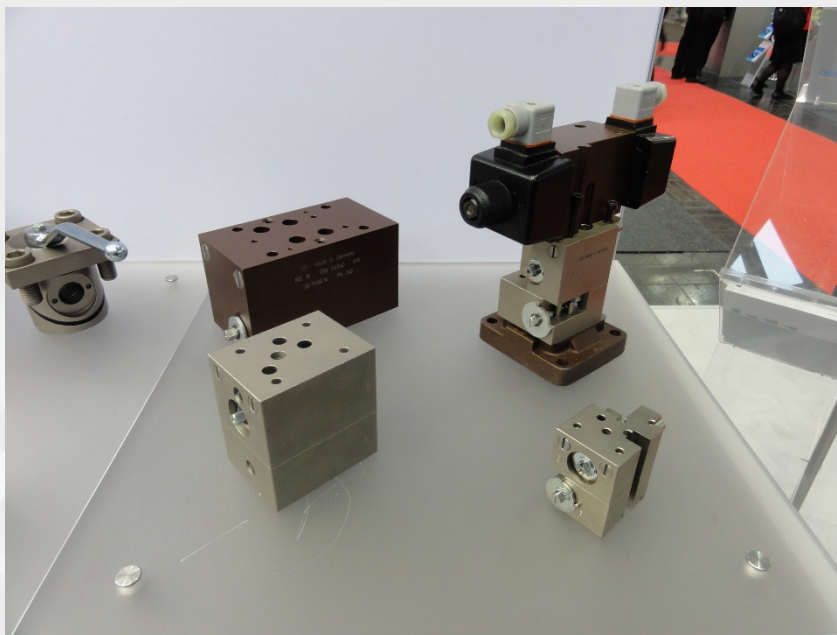
- with floating ball
- with trunnion ball





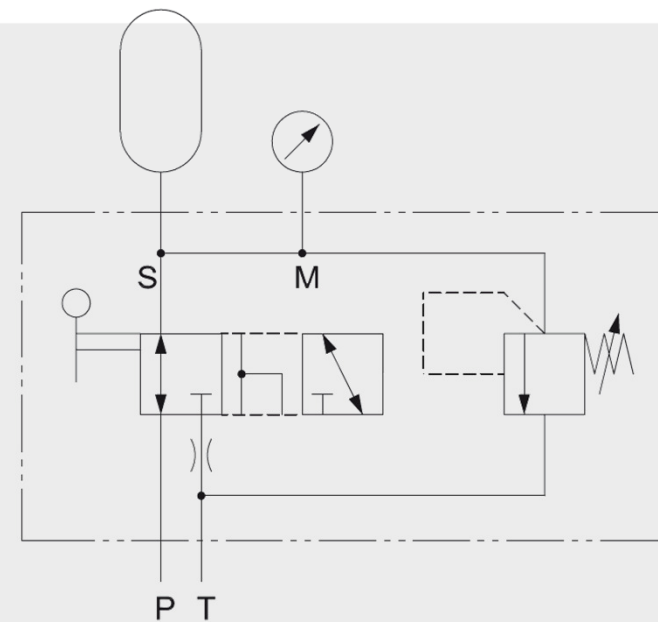
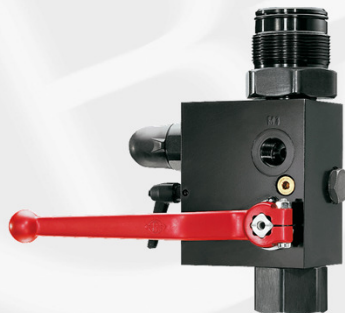
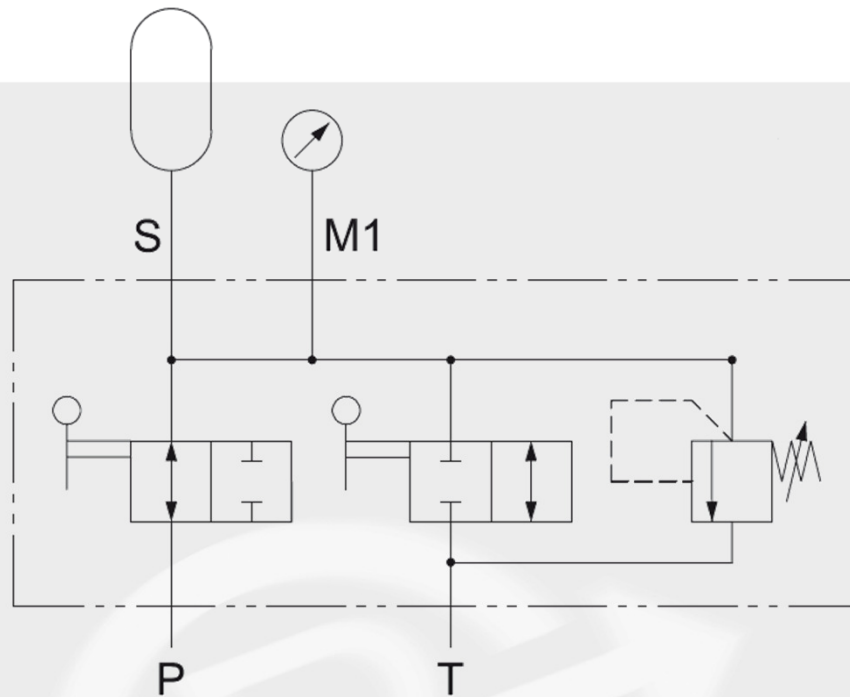
Ball valve-combinations

- Shut-off blocks with integrated bypass and safety lock
- Sandwich plates
- Accumulator safety blocks





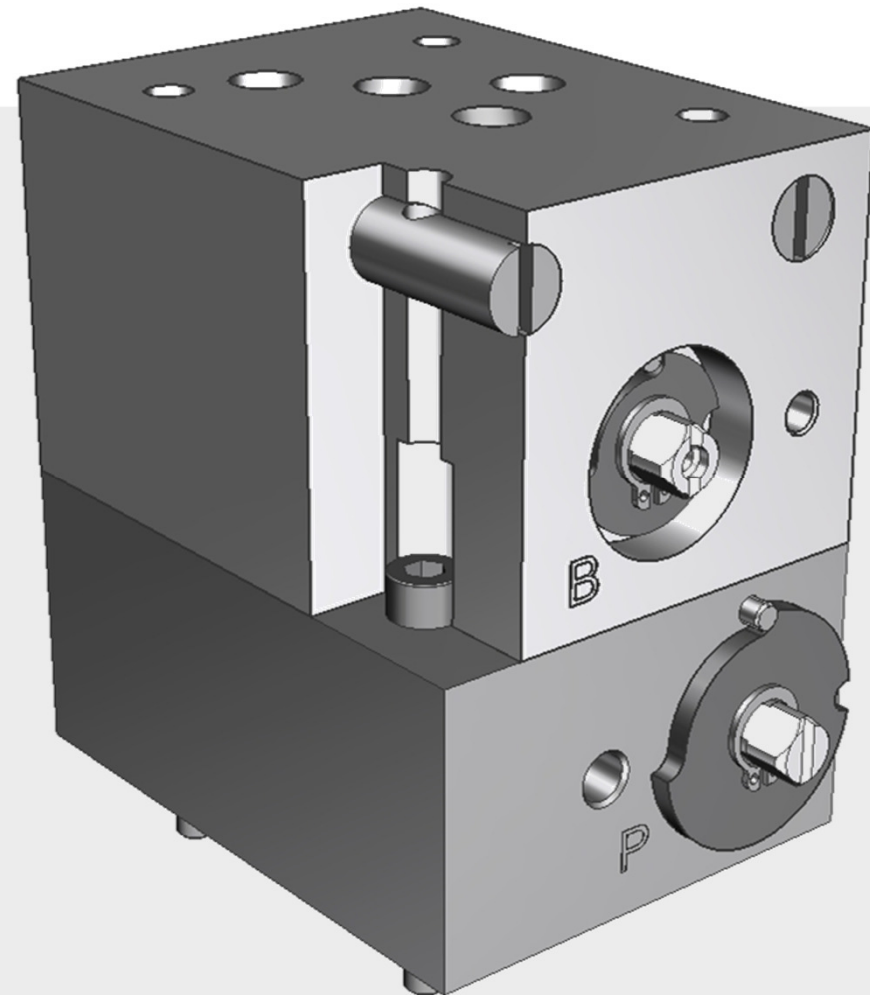
Accumulator safety blocks





Sandwich plates

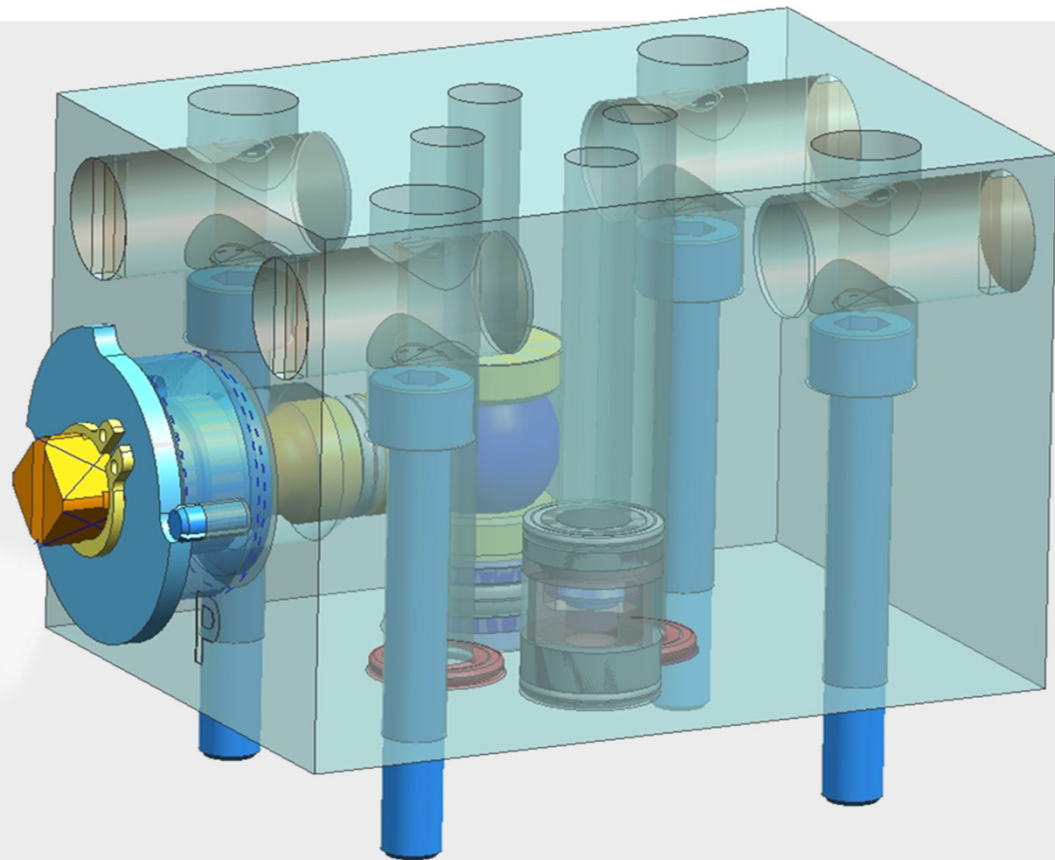
- function: to shut off solenoid valves with porting pattern according to ISO 4401
- can be assembled without rework of the hydraulic block
- limit switches and locking devices available
- reduces the machine downtime in huge hydraulic systems





Sandwich plates

- slim editions of our sandwich plates are also available
 - shut off P and T only
 - shut off A and B only





Ball valves for instrumentation technology

- 2-way ball valves with test line connections (TK2)
- Multi-way ball valves with floating ball for pressure gauges
- Directional ball valves for differential transducers (TK5-TK7)
- Test valves MBV 5000

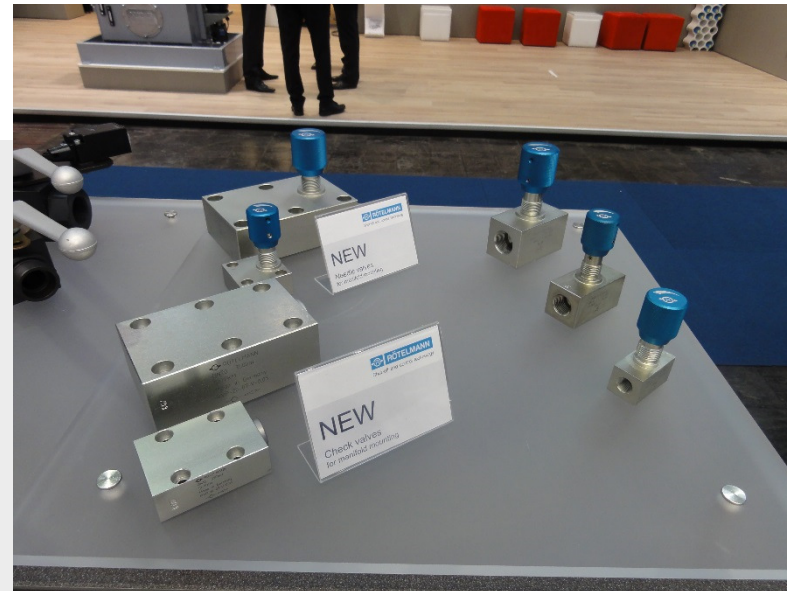
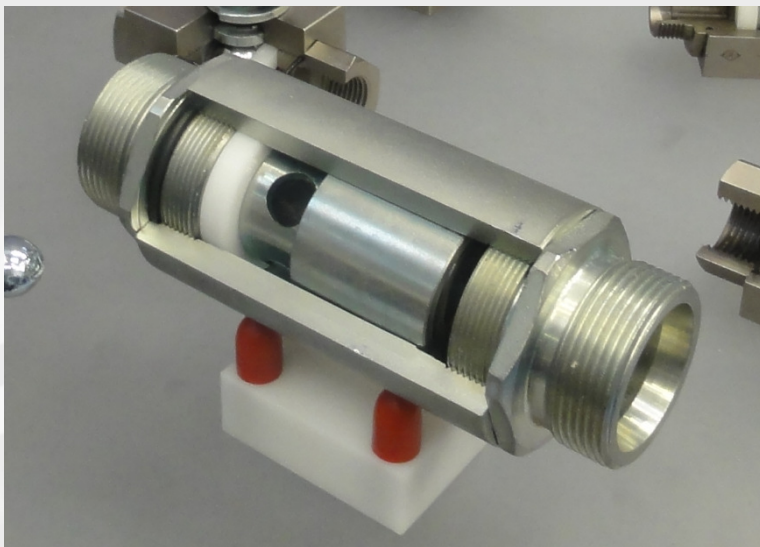


测试阀组；压力传感器控制球阀



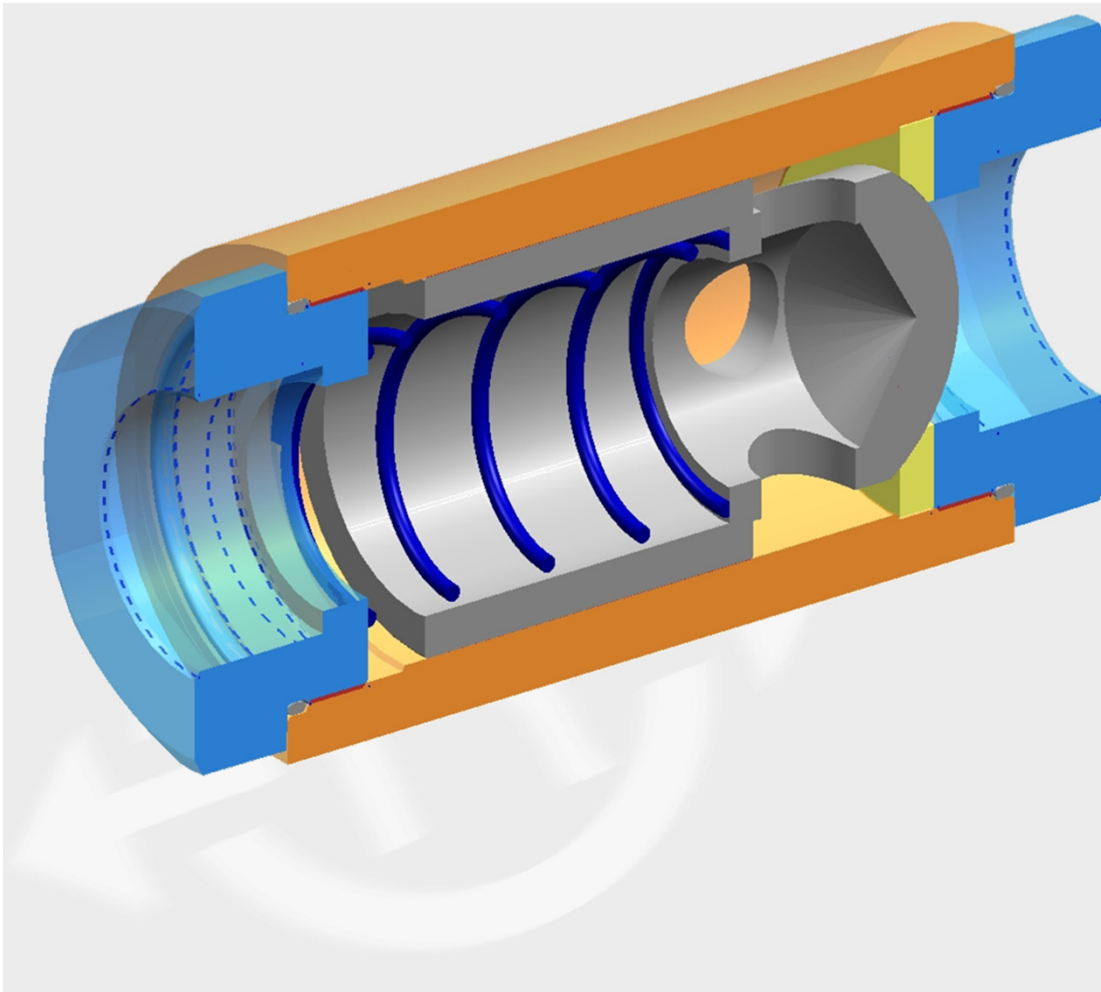
Valves

- Check valves
- Needle valves
- Flow control valves





check valves



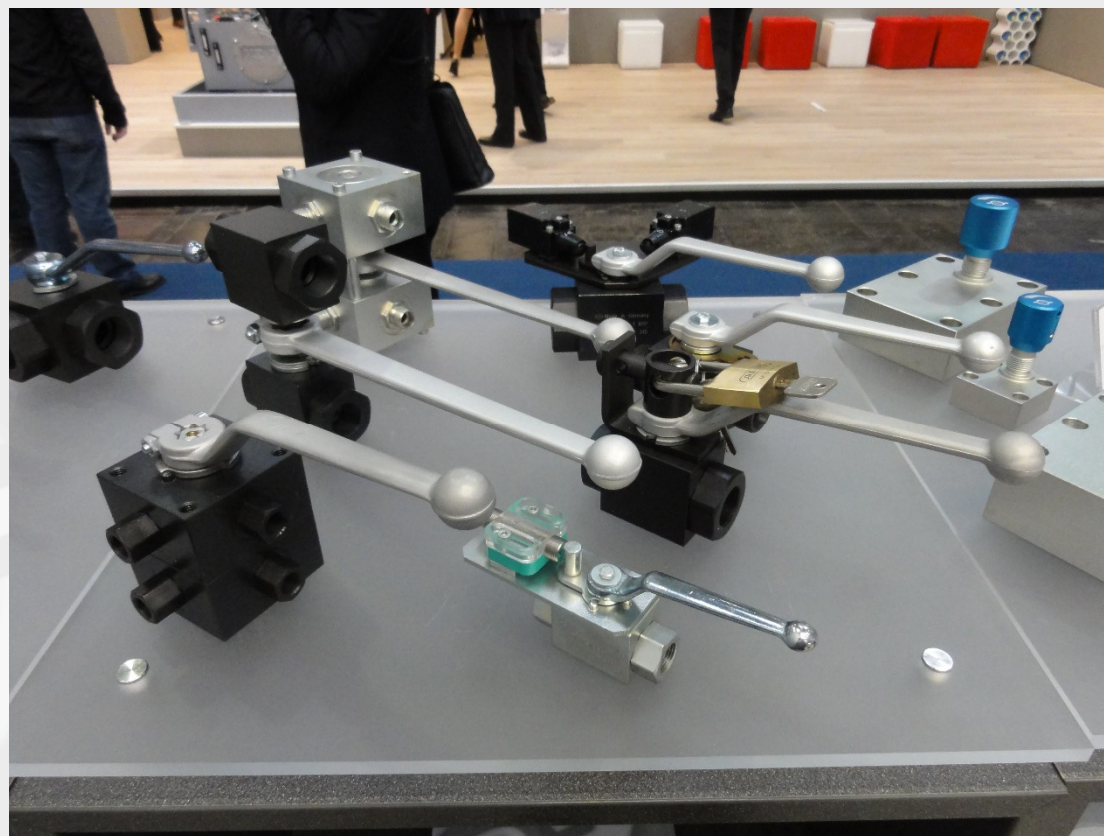
advantages:

- standard components of ball valves are used (connectors, seat)
- high flexibility regarding the connectors (HS, LS, BSP, NPT, ...)
- the seat is especially suitable for gas applications (much better tightness compared to a metal seated check valves)
- no flow reduction (!)



Attachments, accessories

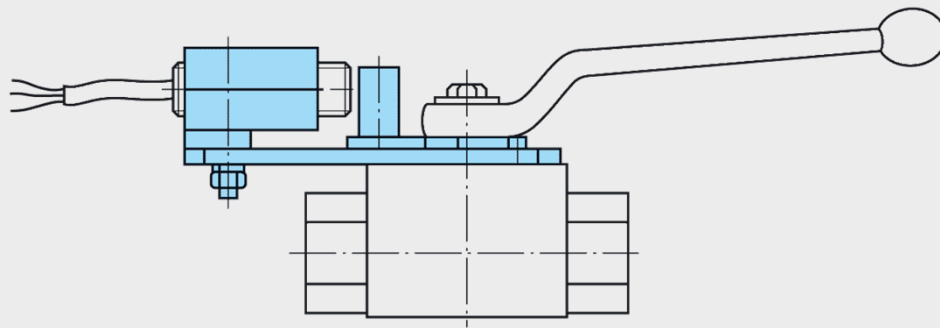
- Mounting kits for limit switches
- Mounting kits for proximity switches
- Locking devices
- Actuators
- Detents
- Handles





Attachments, accessories

Mounting kits for limit switches + proximity switches



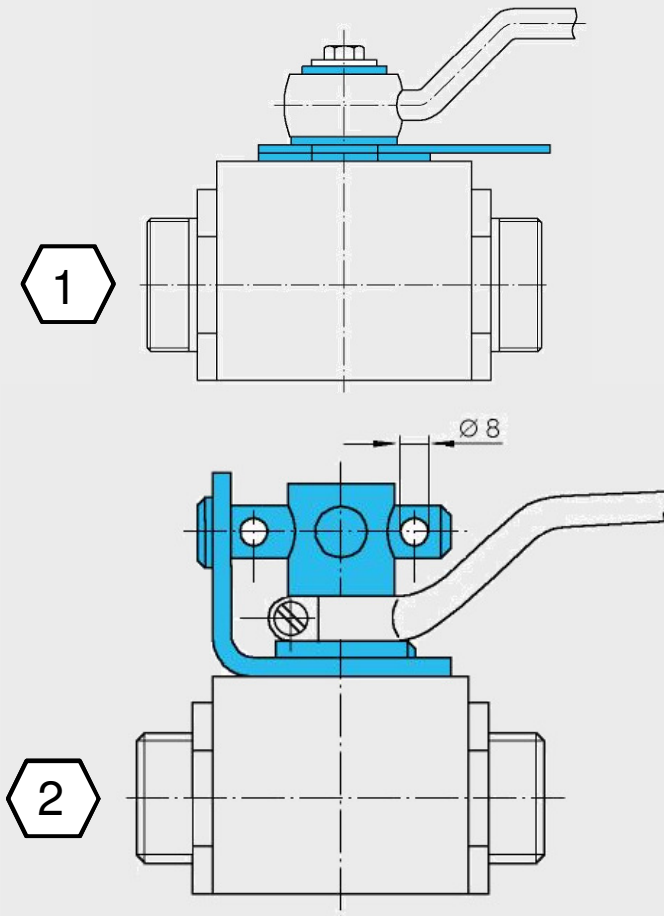
- flexible plate system to assemble limit switches and proximity switches
- it is possible to retrofit our mounting kits without reworking the body
- 3 versions available: position control of closed position, open position and both positions





Locking devices

- flexible plate system to assemble locking devices
- it is possible to retrofit our locking devices without rework of the body
- can be locked in open and close position
- 2 standards:
 1. Economy Version
 2. High Sophisticated Version



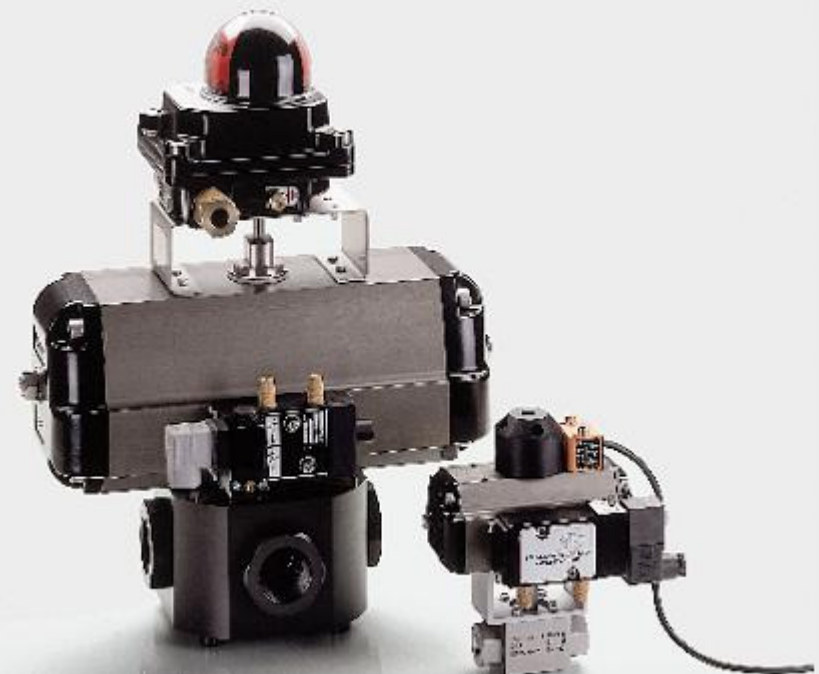


Actuators

1. pneumatic actuators
2. electrical actuators
3. hydraulic actuators

optional:

- limit switches
- solenoid valve
- optical position indicator

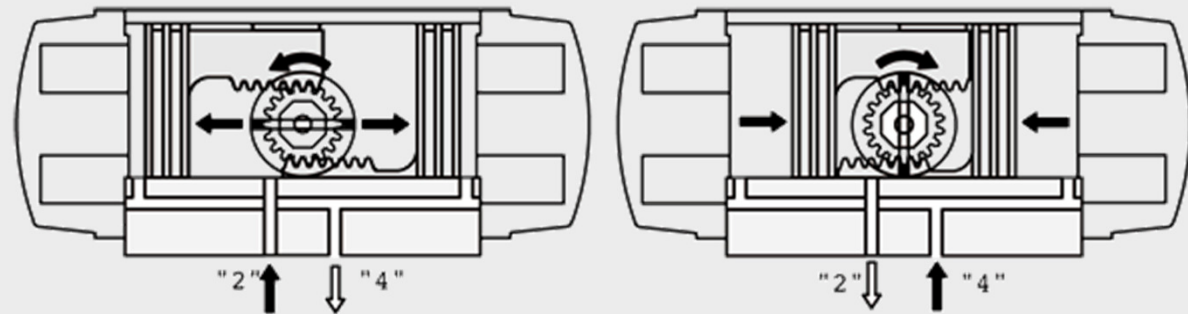




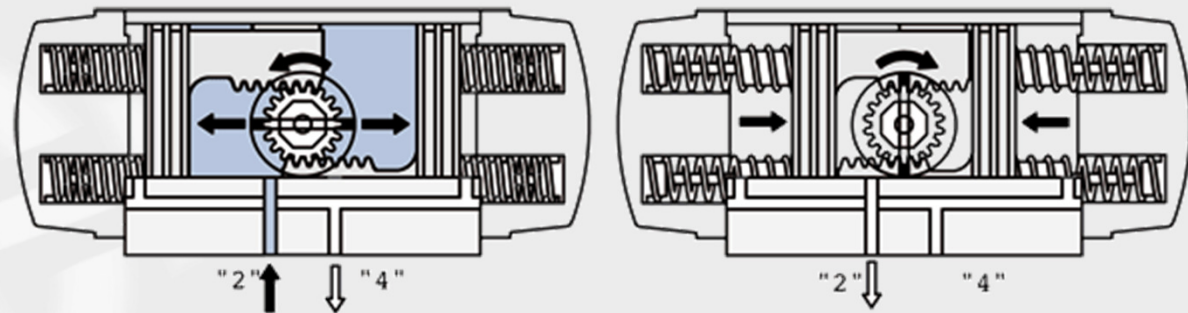
Attachments, accessories

Pneumatic actuators

Double-acting

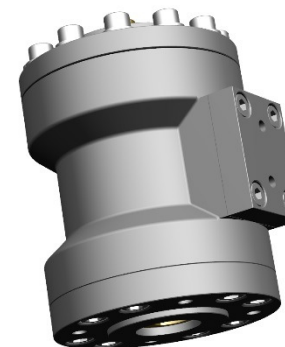
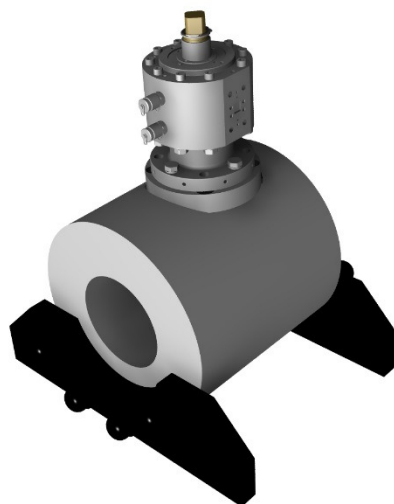
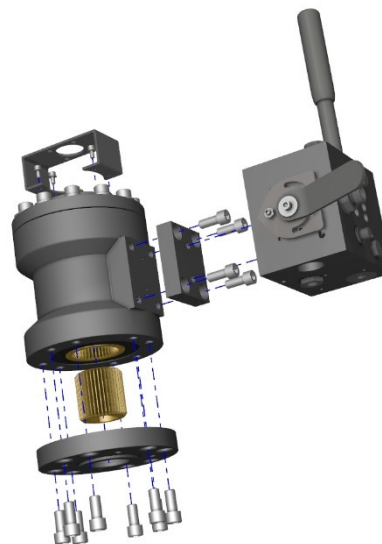
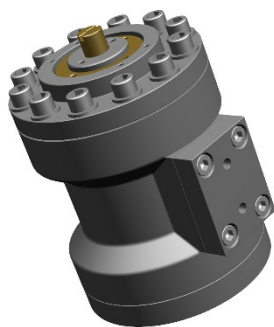


Single-acting





NEW: Hydraulic Actuators RSI





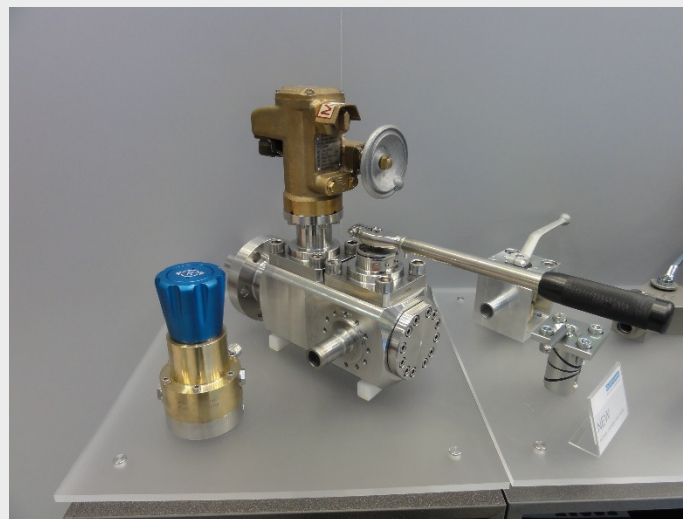
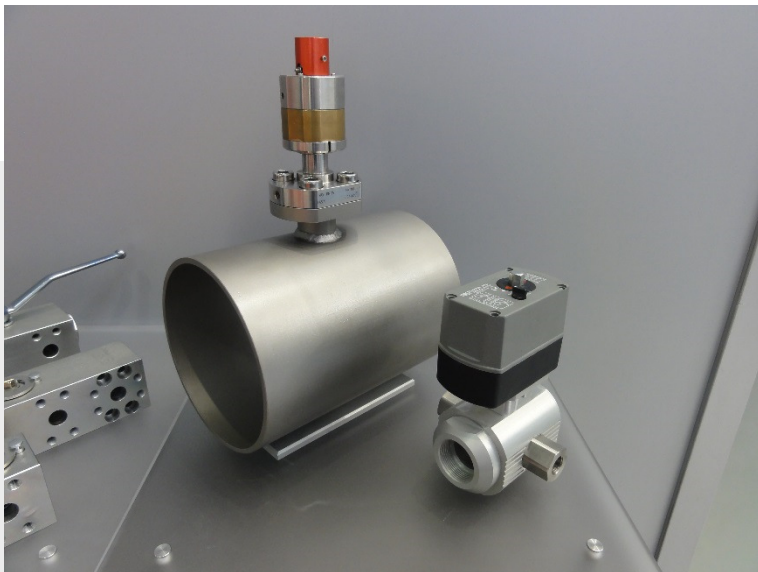
Special solutions



With a Rötelsmann ball valve
less would have been more!

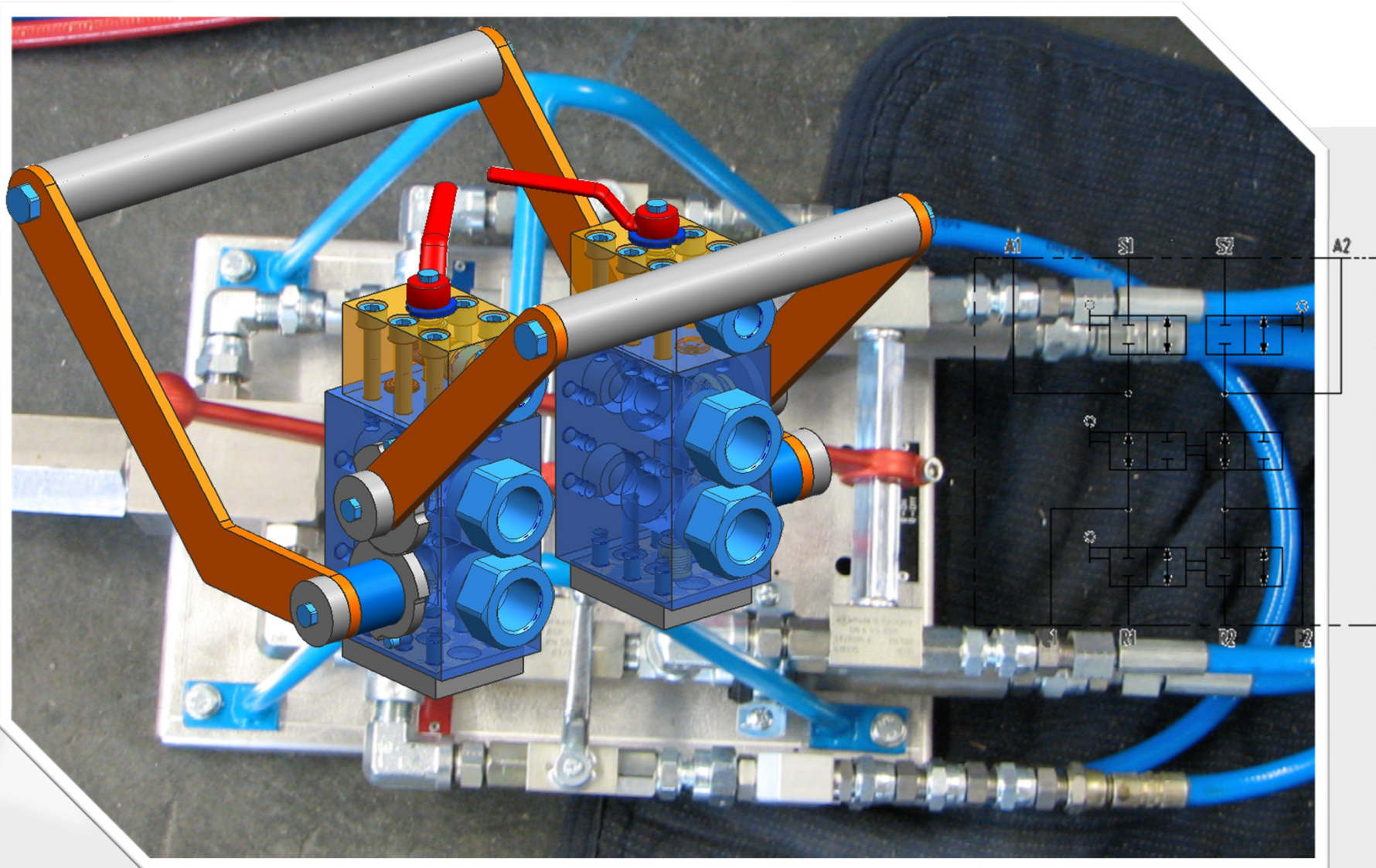


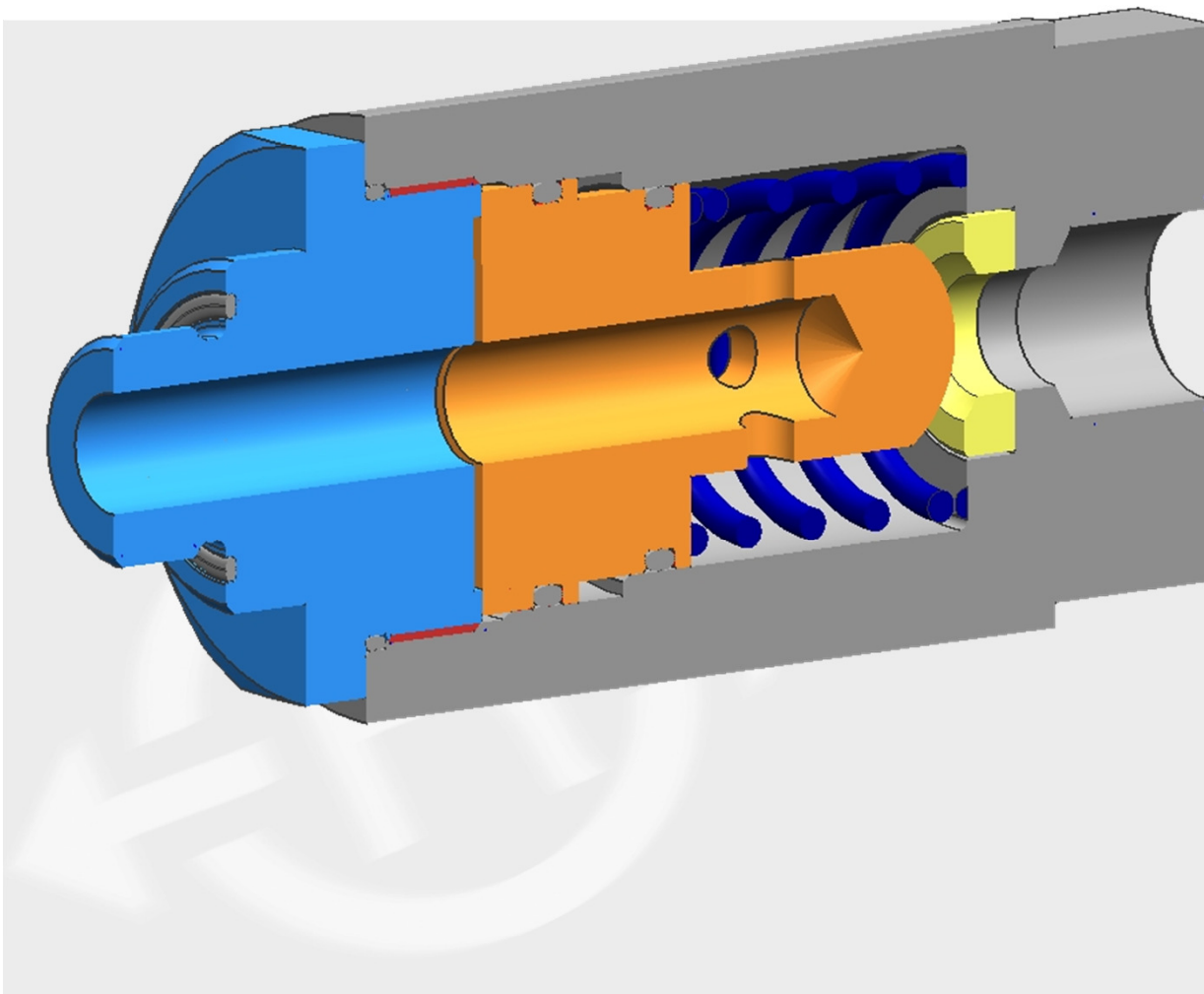
Vast range of special ball valve systems





Special solutions

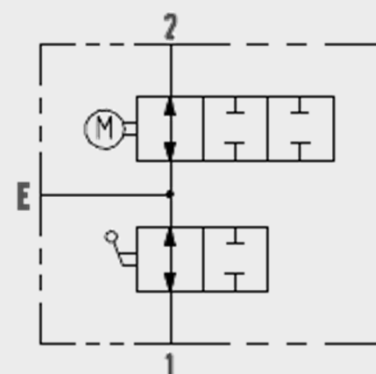
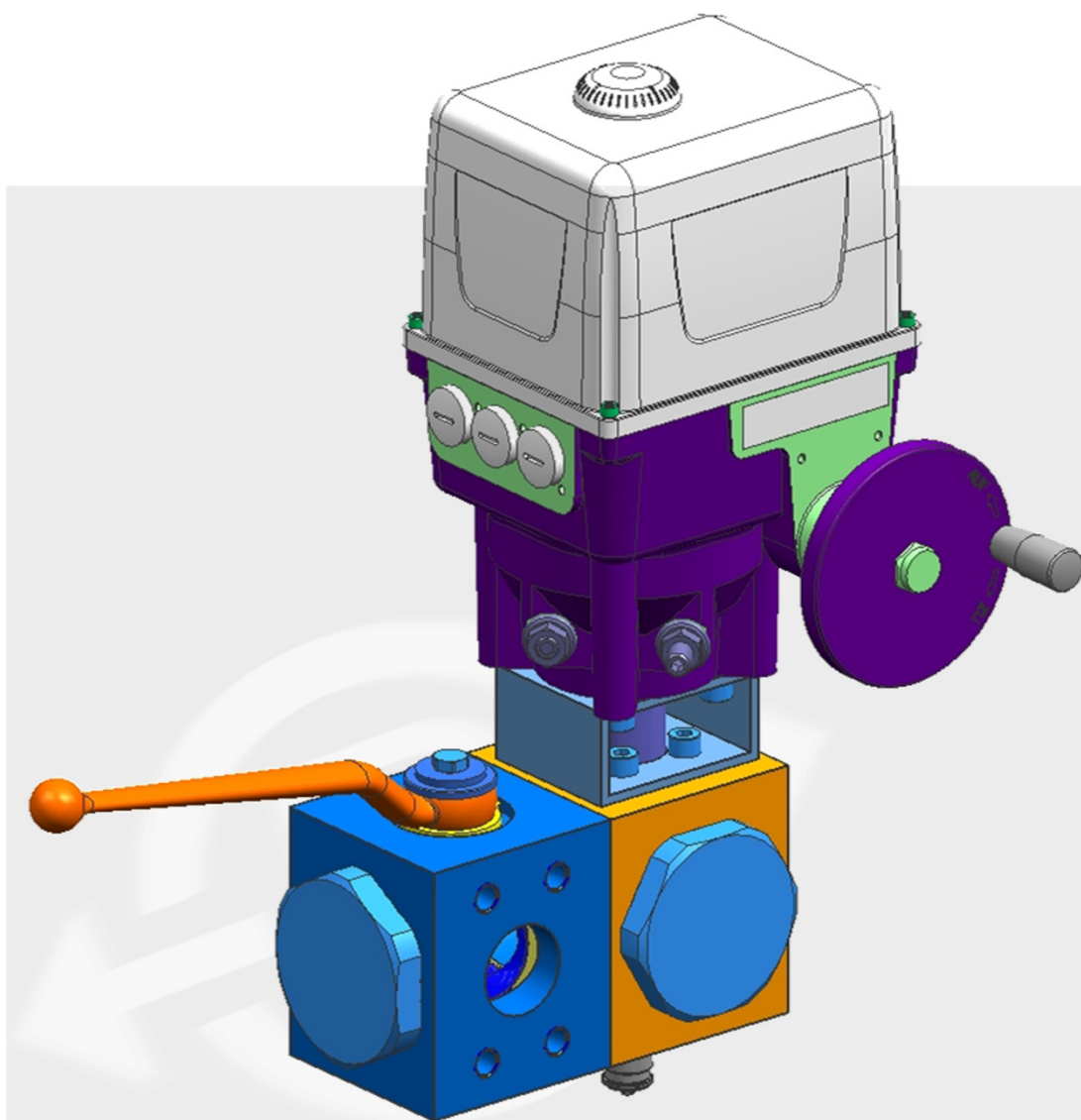




- high pressure gas application
- closes at more than 18 bar
- opens at less than 10 bar

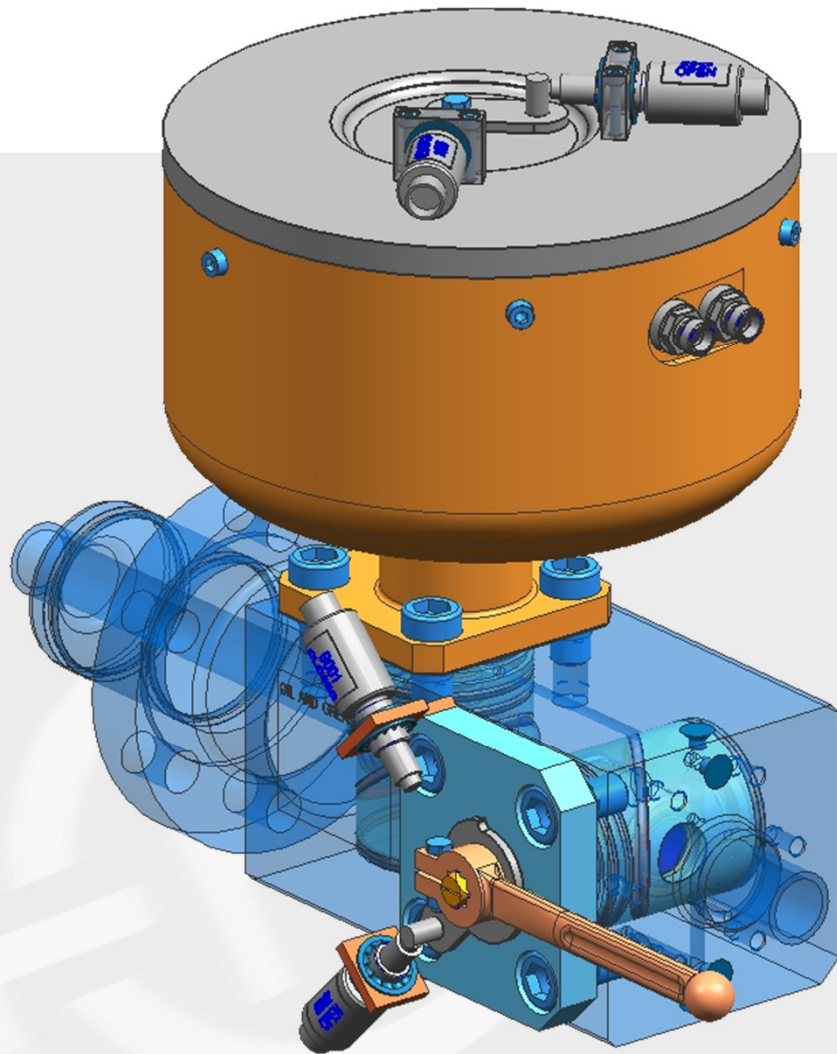


Special solutions





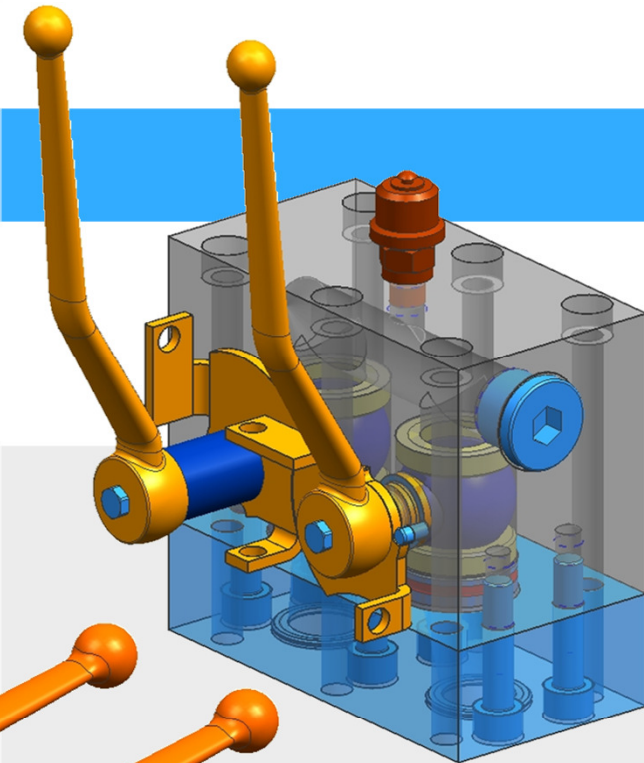
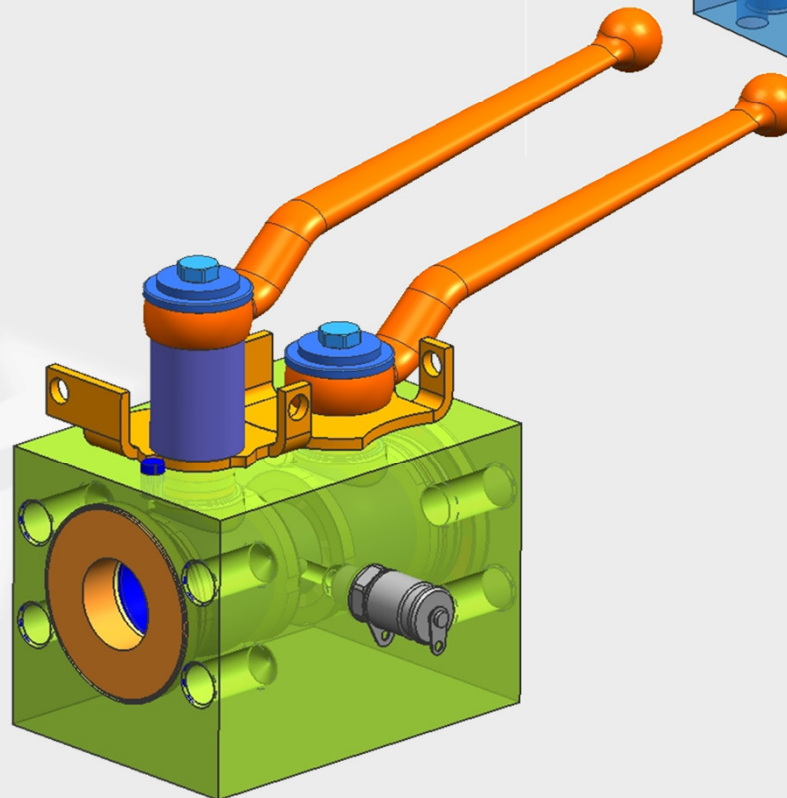
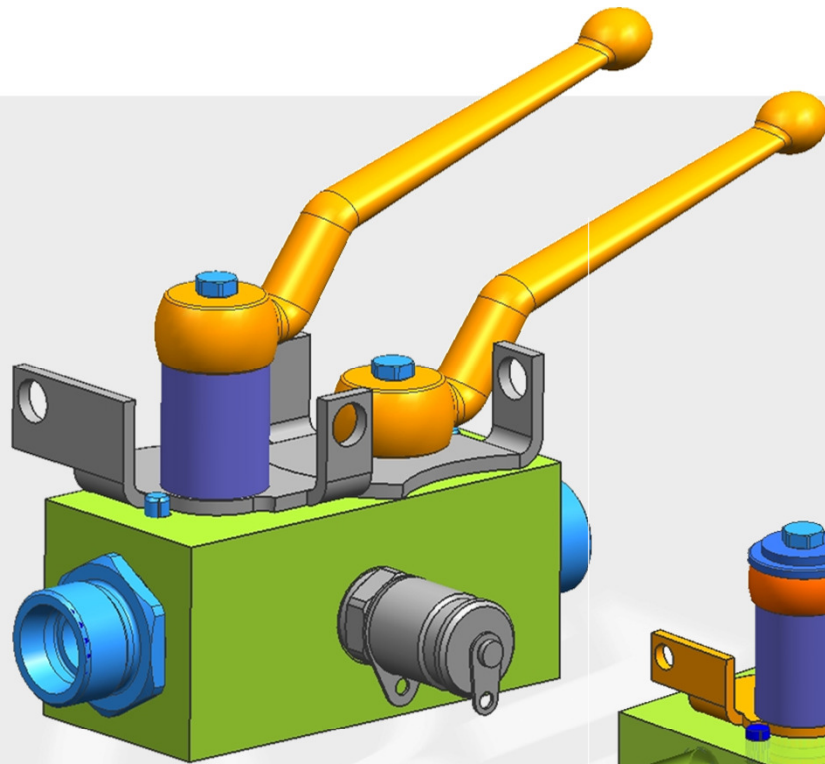
Special solutions



- double shut off device with cartridge ball valves
- medium: hydrogen

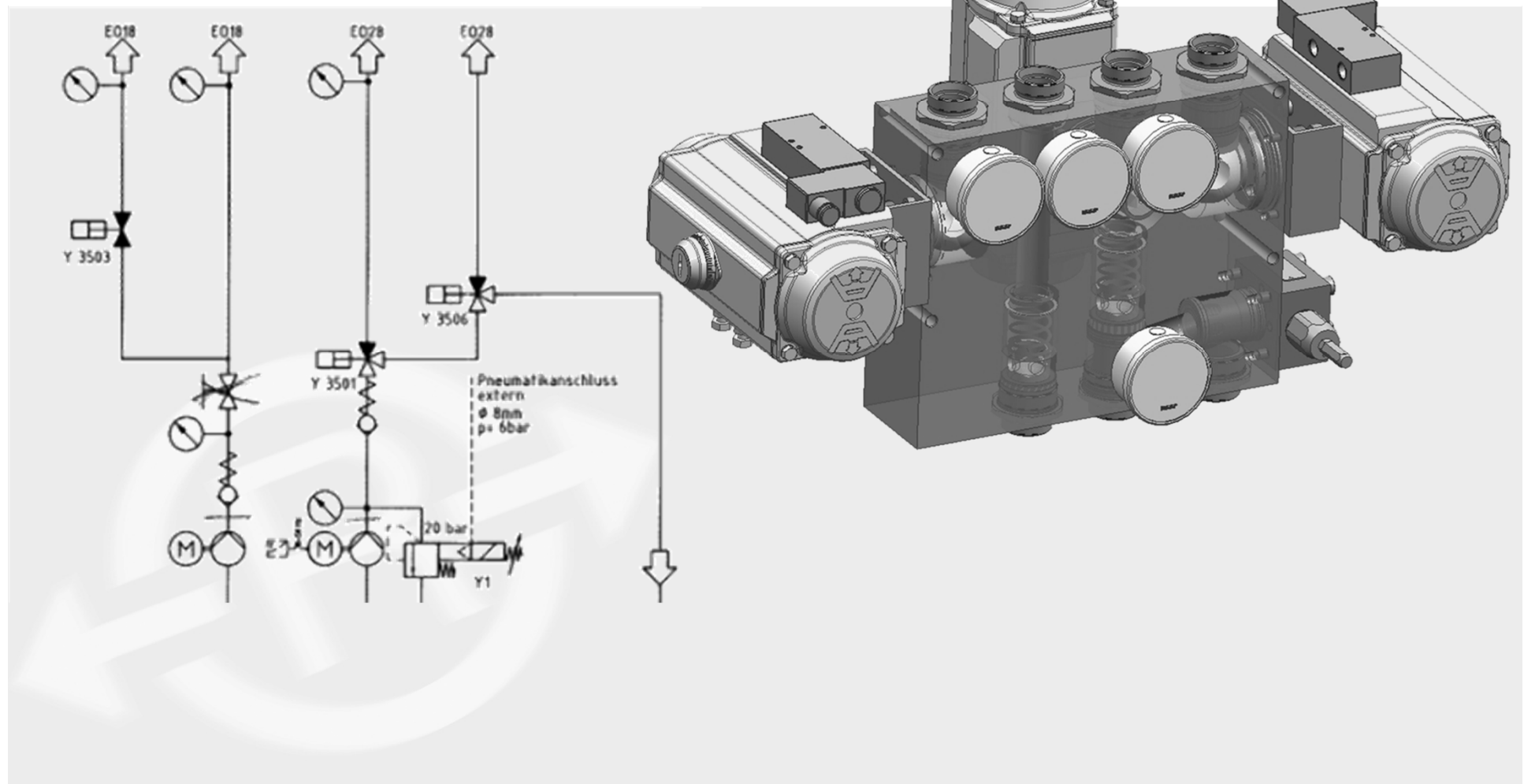


Double Block & Bleed valves



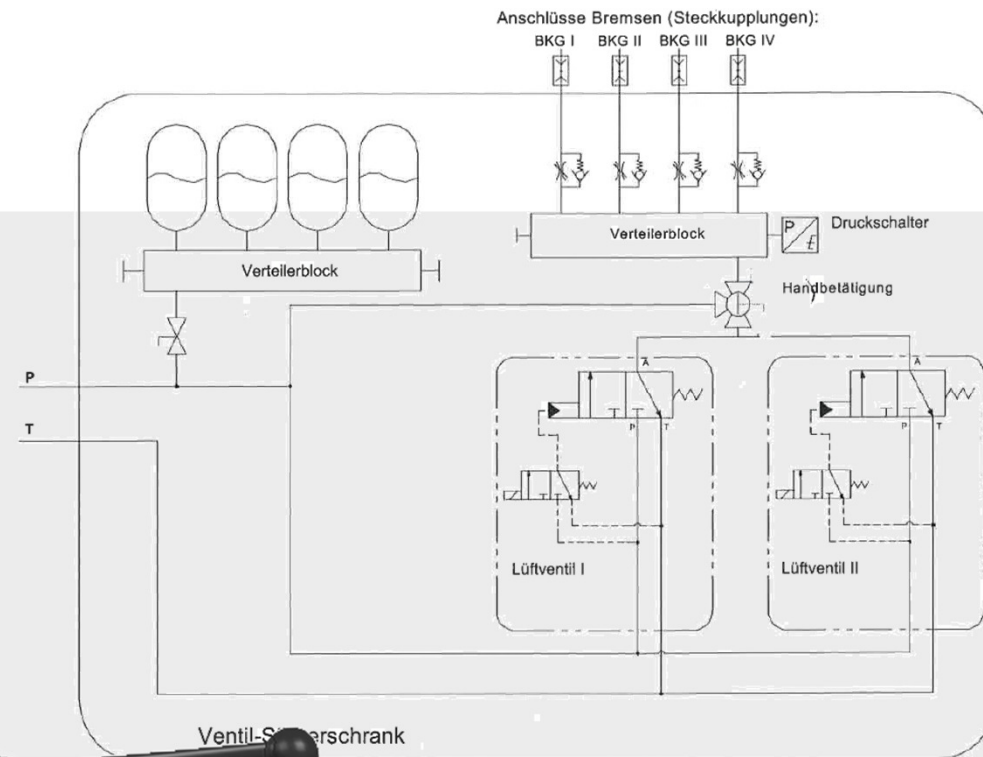
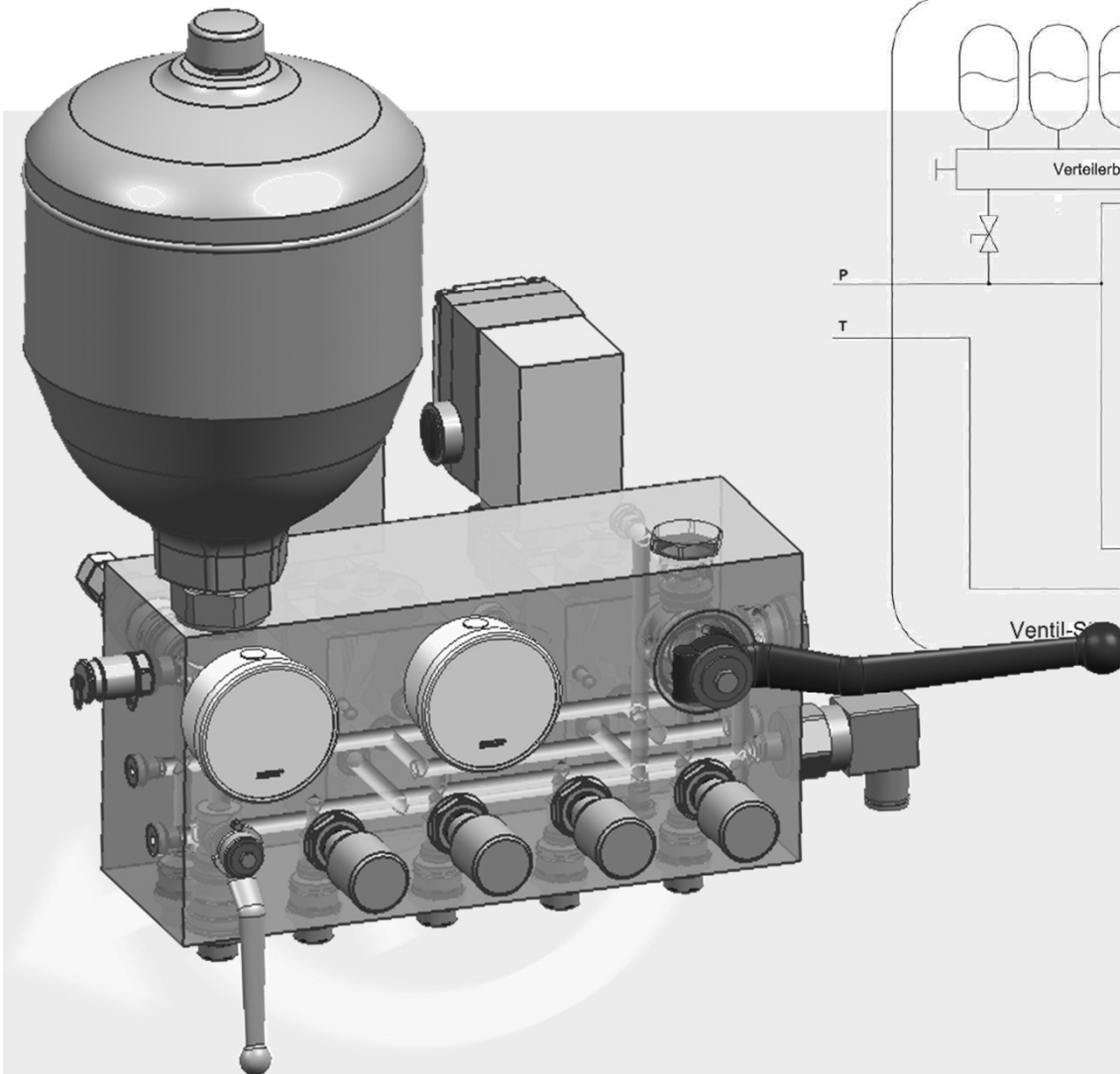


Special solutions





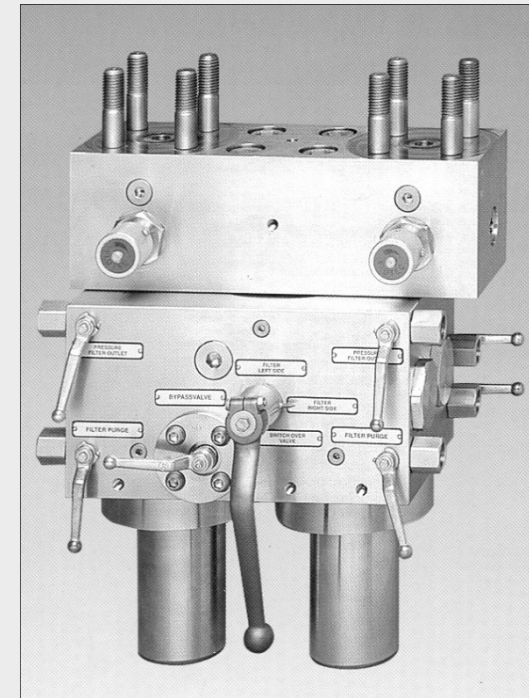
Special solutions





Gas applications

- ball valves with flange connection are common
- certification according to DVGW
- special design ball valves are in use (for example double filter applications)





www.roetelmann.de

THANK YOU VERY MUCH!