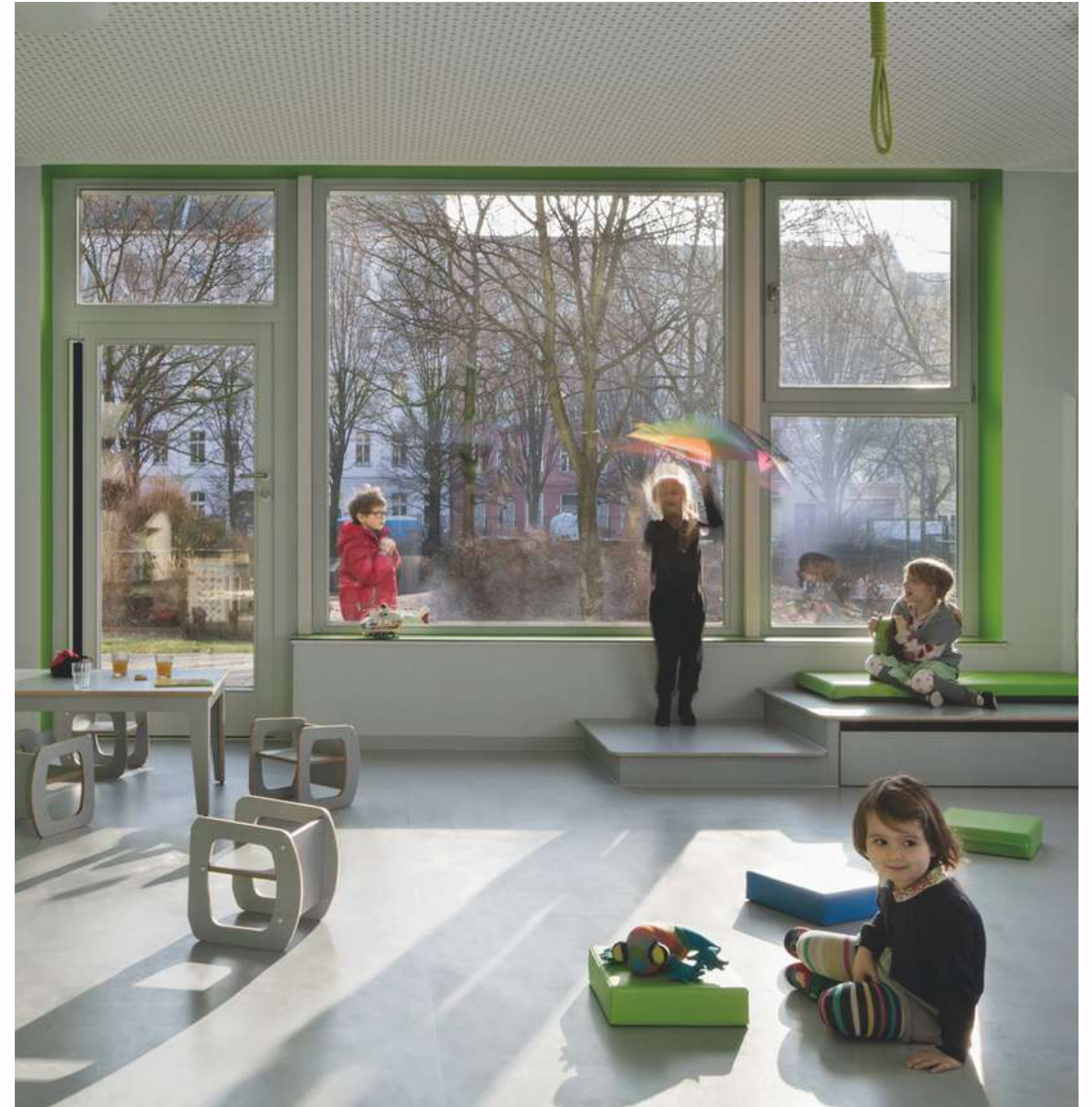


# DESIGN KINDERMÖBEL CLAUDIA SEEGER





# CLAUDIA SEEGER

Managing director of Design-Kindermöbel

my Statement:

planning furniture - form follows function

planning rooms - with atmosphere

planning entire facilities - with your identity

in your pedagogical statement



# OUR PRODUCTS

03

## Furnitures for children



SLEEPING



MOVEMENT



RESEARCH

# OUR PRODUCTS

Furnitures for sleeping rooms  
for children under 3 years

04



Furnitures for  
sleeping rooms



Podiums  
in combination with wave beds



Podiums  
in combination with bunk beds



Details



Wave beds and bunk beds in combination



Dubble bunk beds

# OUR PRODUCTS

## Movement landscapes

06



Elements are  
Podium, Stairs



Wobble bridge  
Caves under a tower



Oblique plane



Details



Playing and sleeping landscape

07



# OUR PRODUCTS

## Area RESEARCH

08



Table and container can be connected.



Closet and container and a foldable closet for material and presentation.



Rollable tables for writing, painting and usable for computers.



## Details



A table for diverse possibilities.



Table and connecting element for research.

# Our products

## Area for Writing and language workshop

10



Very inspiring, ...



... very calm - our favorite furniture for kindergarten and schools!



# Our products

## Area for Writing and language workshop

11



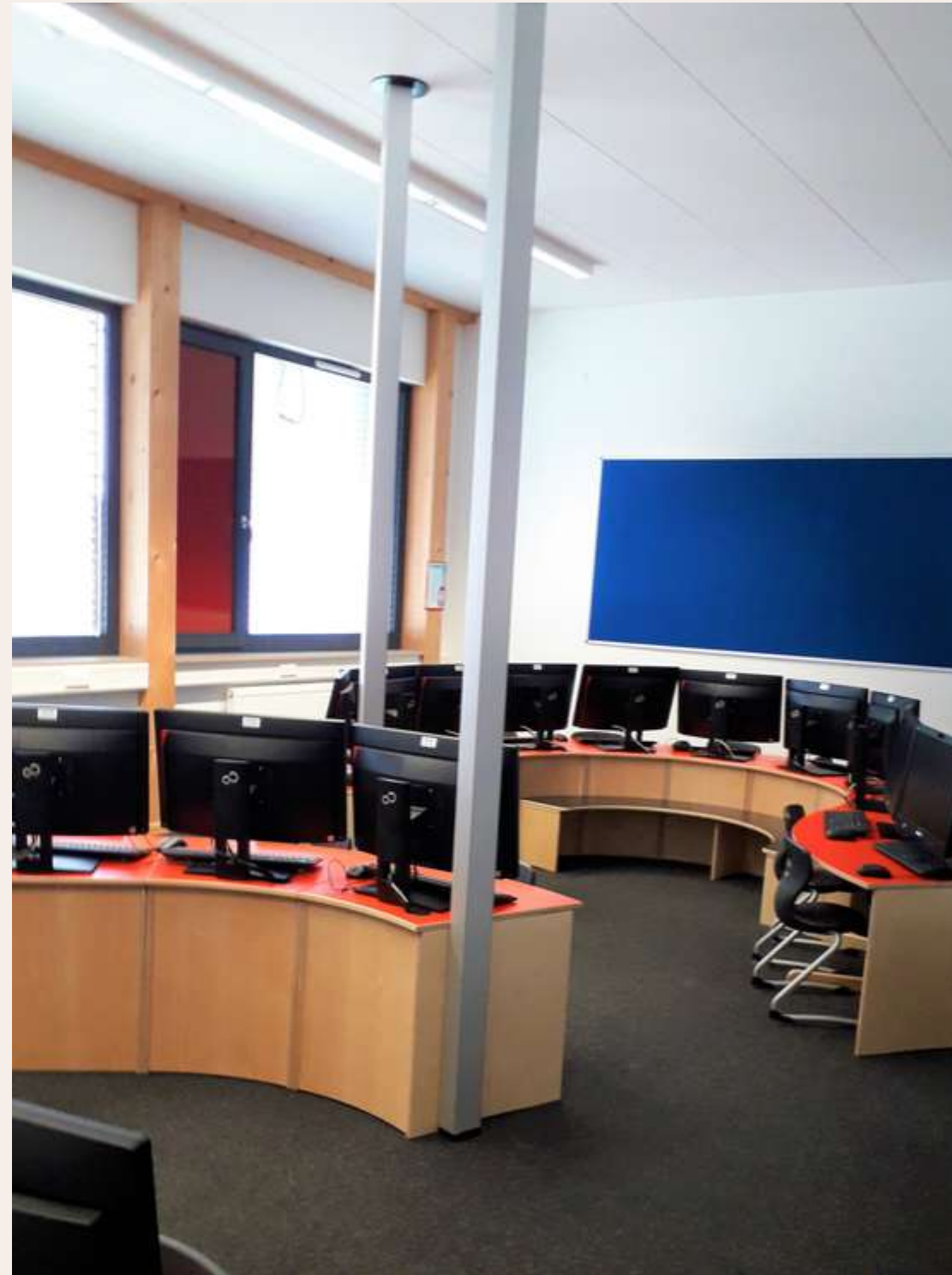
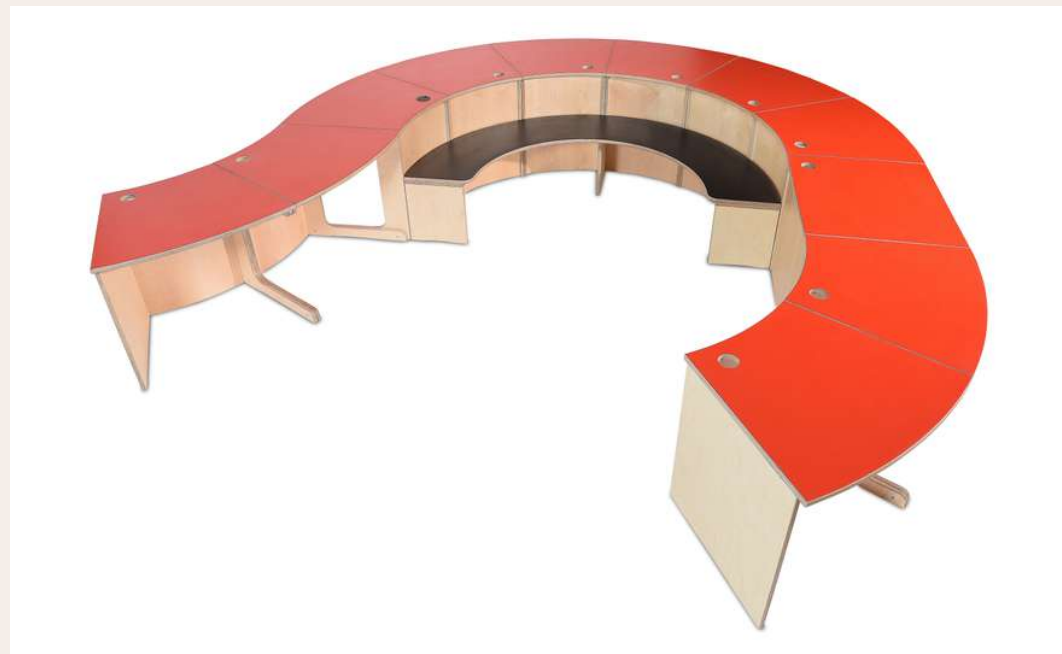
Very comfortable!  
The children's  
rocking chair can  
also be used as a  
table.



# Our products: Digital Areas Tables for Computer

- adapts to any room
- number of workstations infinitely combinable

12





# CUBE SYSTEM

## to build wardrobes, cabinets and sideboards

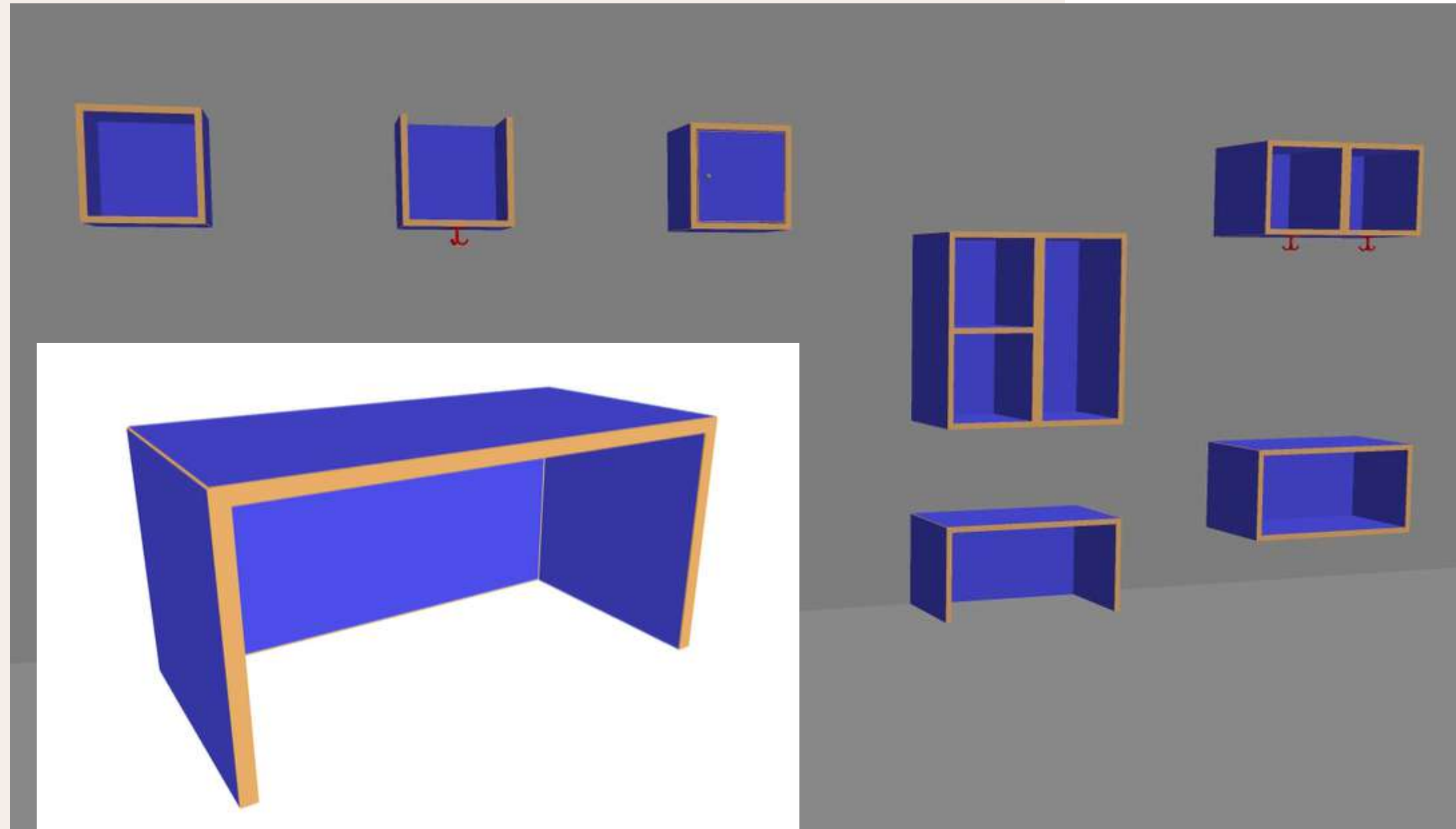
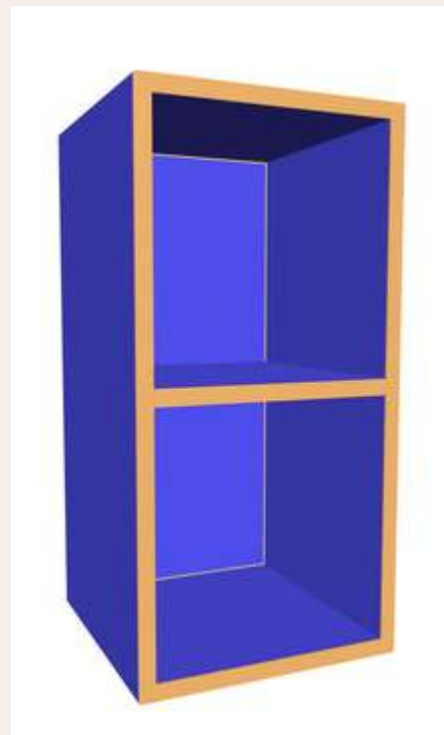
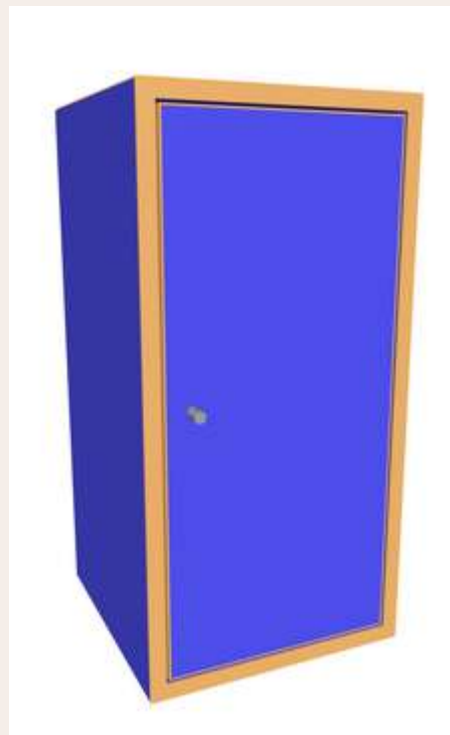
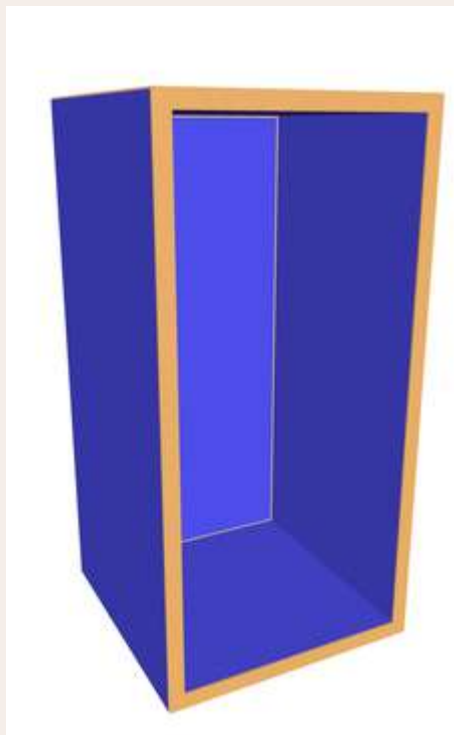
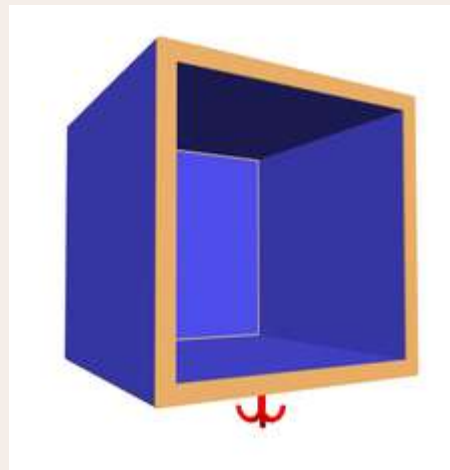
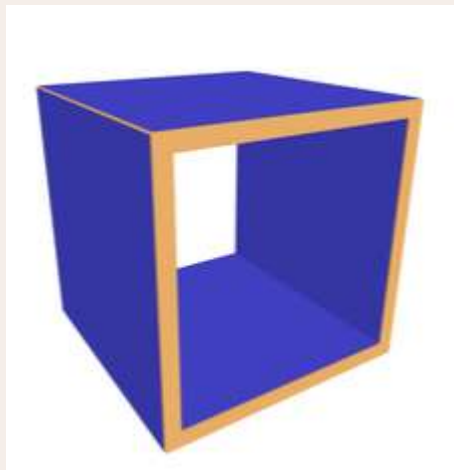
infinitely expandable  
very easy to install  
wide range of colours  
suitable for every room.



# CUBE SYSTEM

to build wardrobes, cabinets and sideboards

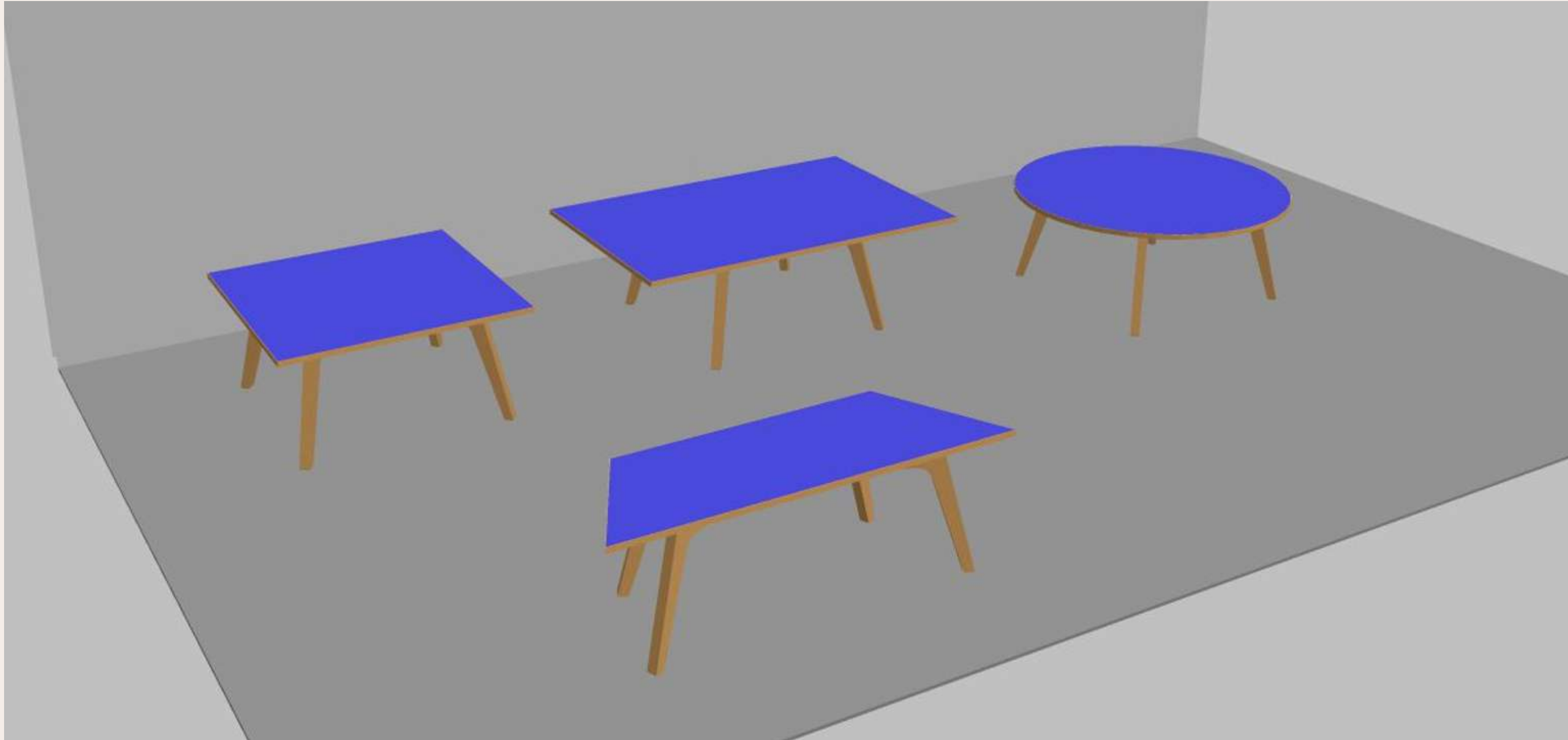
14





# CUBE SYSTEM and matching tables

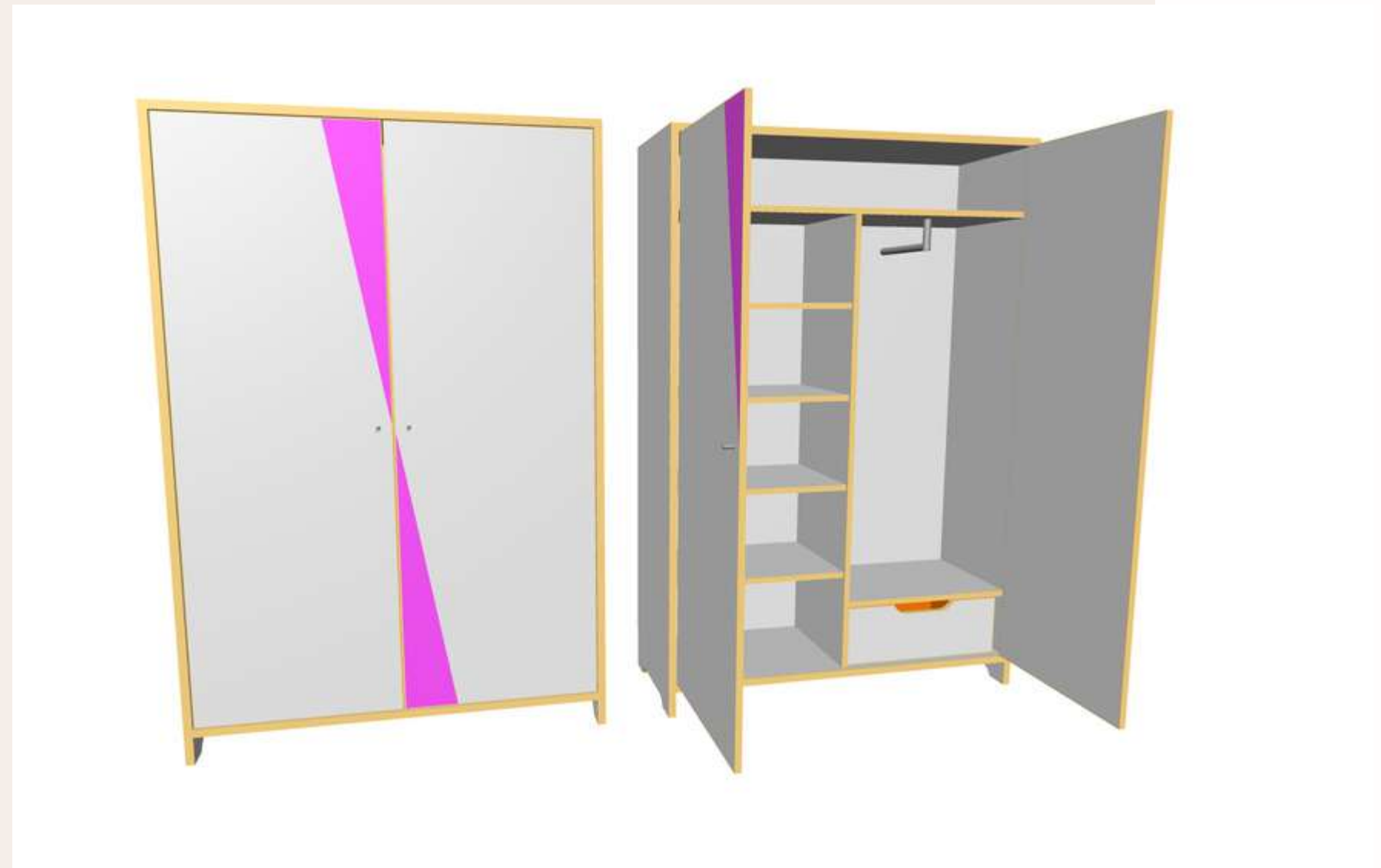
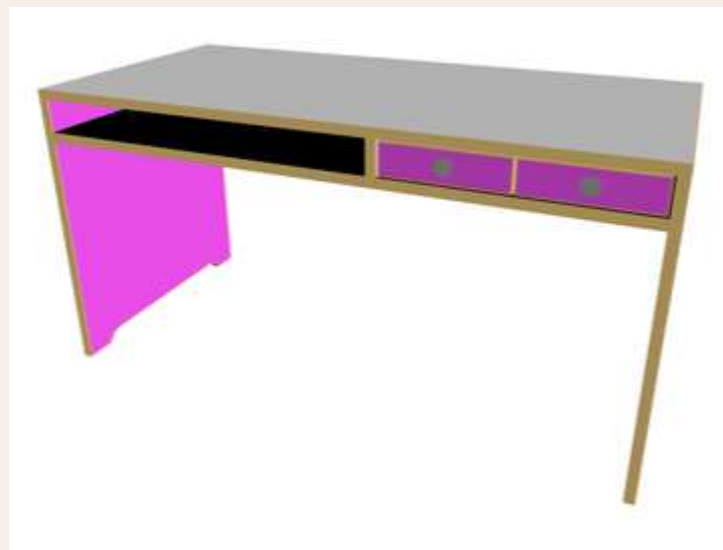
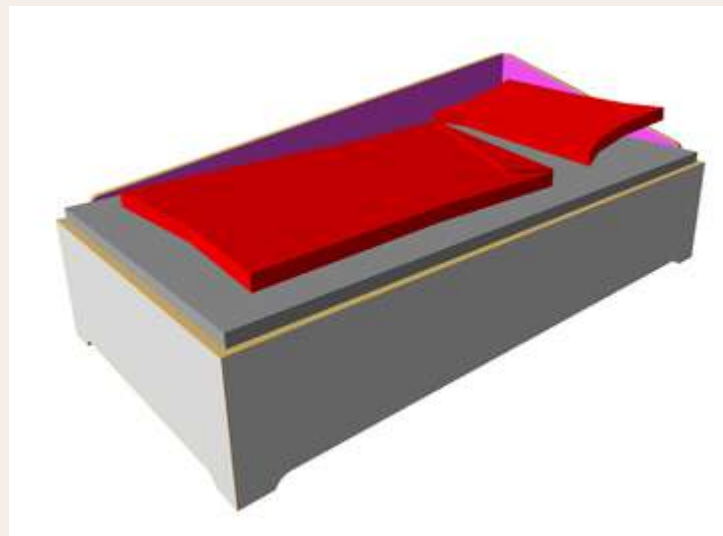
15



# MODELL EMILIA

Furnitures for Children designed and funny also for young adults in colours pink, blue, grey and black combined with white.

16

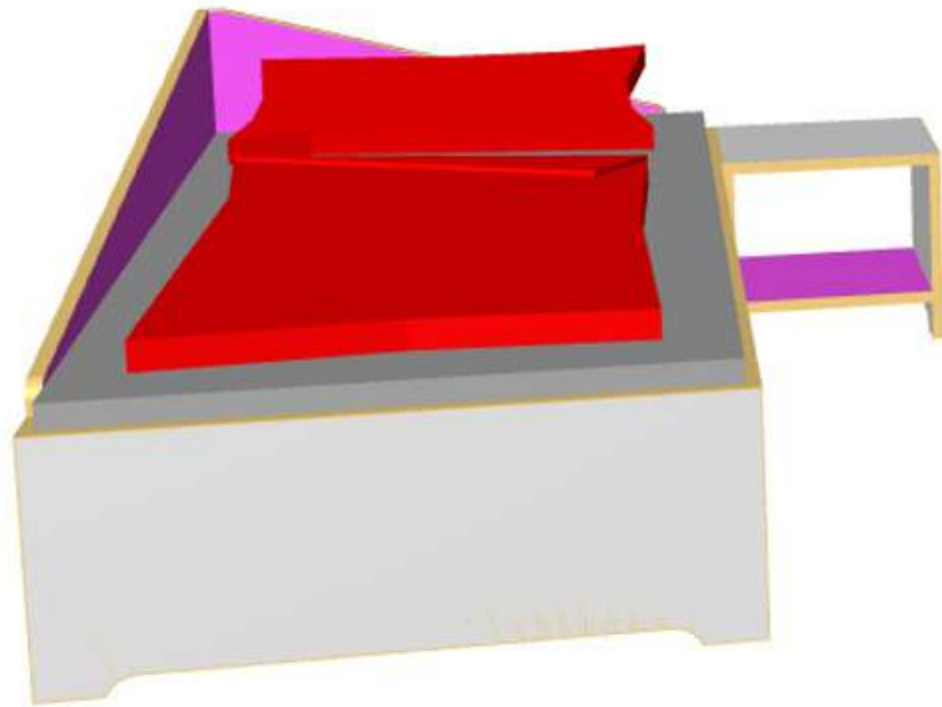




# MODELL EMILIA

Furnitures for Children designed

17



# OUR SERVICE

## Spatial planning

Gains

18





# REFERENCES

Sculpture of a children's library



Architecture office:  
Max Dudler, Berlin



Total equipment



# Equipment for a School in Wolfsburg bof architectures, Hamburg

20





# Equipment for a School in Wolfsburg bof architectures, Hamburg

21





# Kindergarten City, Berlin

Material: Koski

22



Architect:  
thinkbuilt  
Architecture  
Jason Danziger,  
Berlin







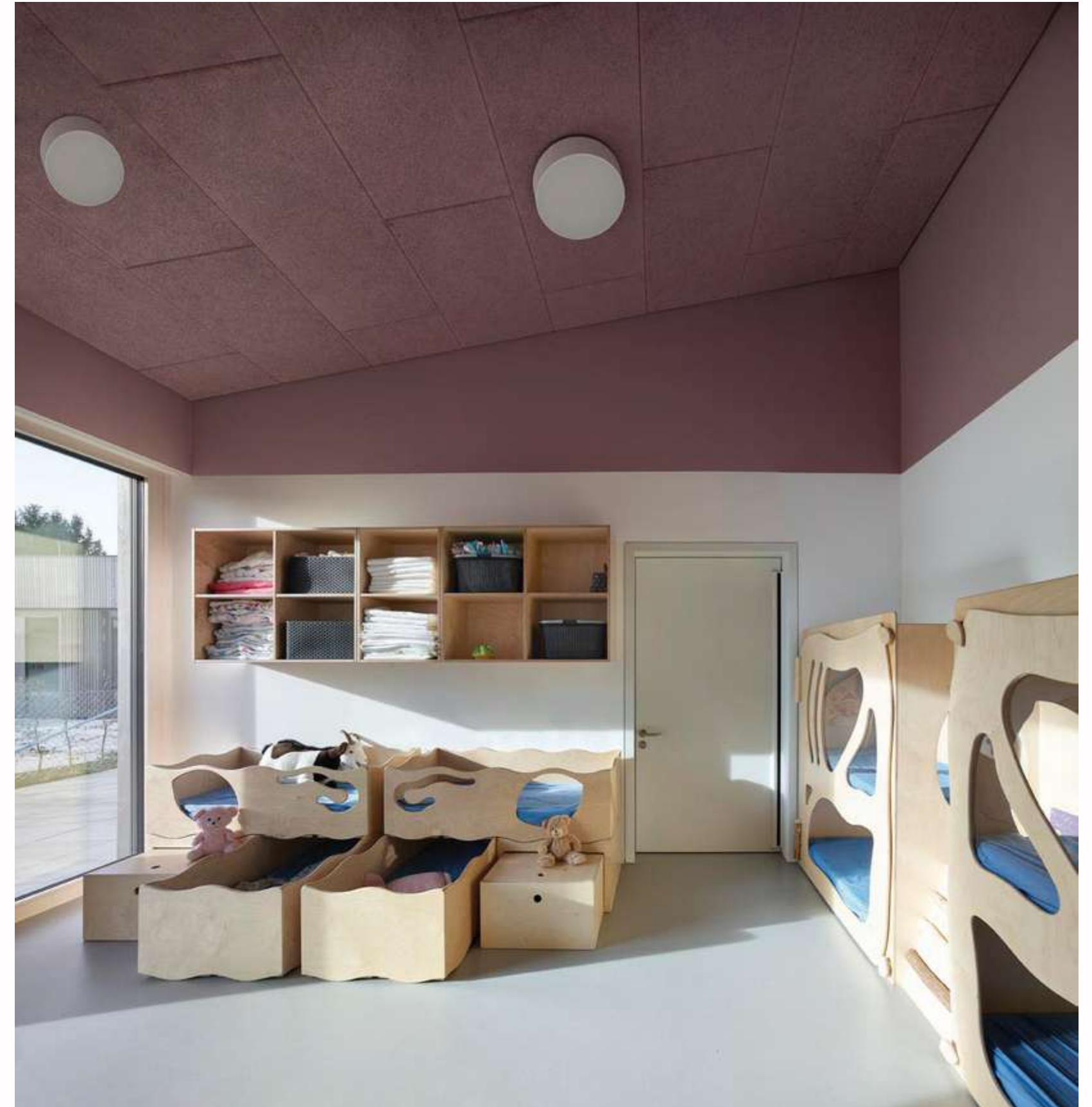
**THANK YOU FOR YOUR  
ATTENTION AND LOOK  
FORWARD TO WORKING  
WITH YOU**

**24**



# YOUR CARPENTER THALER

**Ihr Schreiner Thaler®**  
CARPENTERS BUSINESS FROM GERMANY



YOUR CARPENTER THALER



# MATTHIAS THALER

My name  
is Matthias Thaler.  
I am master carpenter,  
economist and  
managing director  
of Thaler GbR

02



## OUR PHILOSOPHY

- we are working in cooperation with design-kindermöbel managing director Claudia Seeger.
- actually our carpentry is led in the third generation and the managing directors are Matthias and Christoph Thaler.
- our specialities: Design funitures for children, interiors for nurseys and play schools, storage furniture, high-quality kitchens and individual living.

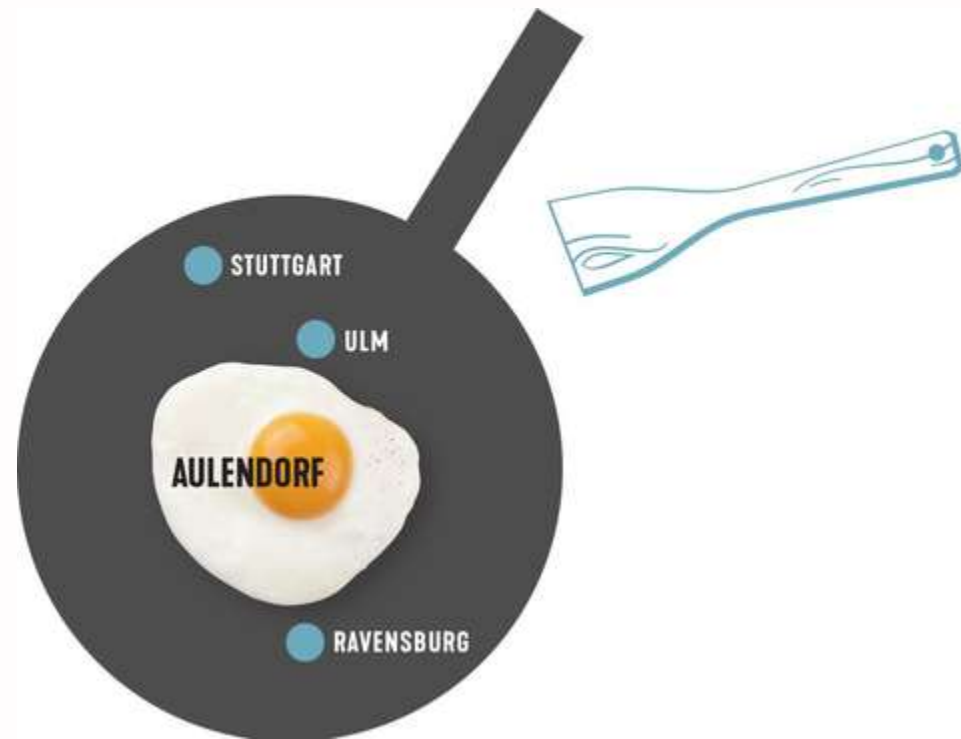
Up to 15 employees work in the company for the complete satisfaction of our customers.





# OUR CARPENTRY IN AULENDORF

05







CNC MACHINE 1



CNC MACHINE 2



HORIZONTAL  
PANEL SAW





**PLANING  
MACHINE**



**EDGING  
MACHINE**



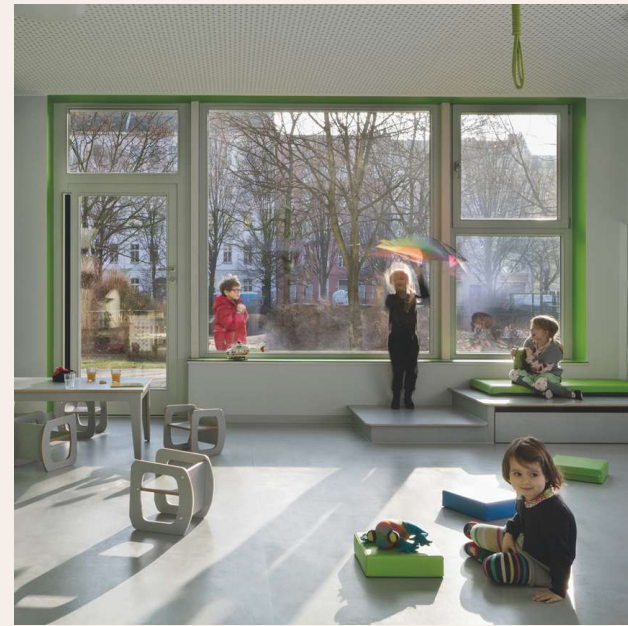
**CIRCULAR  
SAW**

08

## WE VALUE THE HIGHEST ...



High  
craftsmanship.



Longevity  
suitable for  
high humidity.



High quality  
materials.



Production  
in-house  
in Germany.





## We are partner of Design-Kindermöbel

- Cooperation with Designer Claudia Seeger.
- Claudia Seeger designs und plans furniture and facilities
- We manufacture the furniture in the highest German quality in order to be easy to install.

# OUR PRODUCTS

10

## Furniture for children's houses



SLEEPING



MOVEMENT



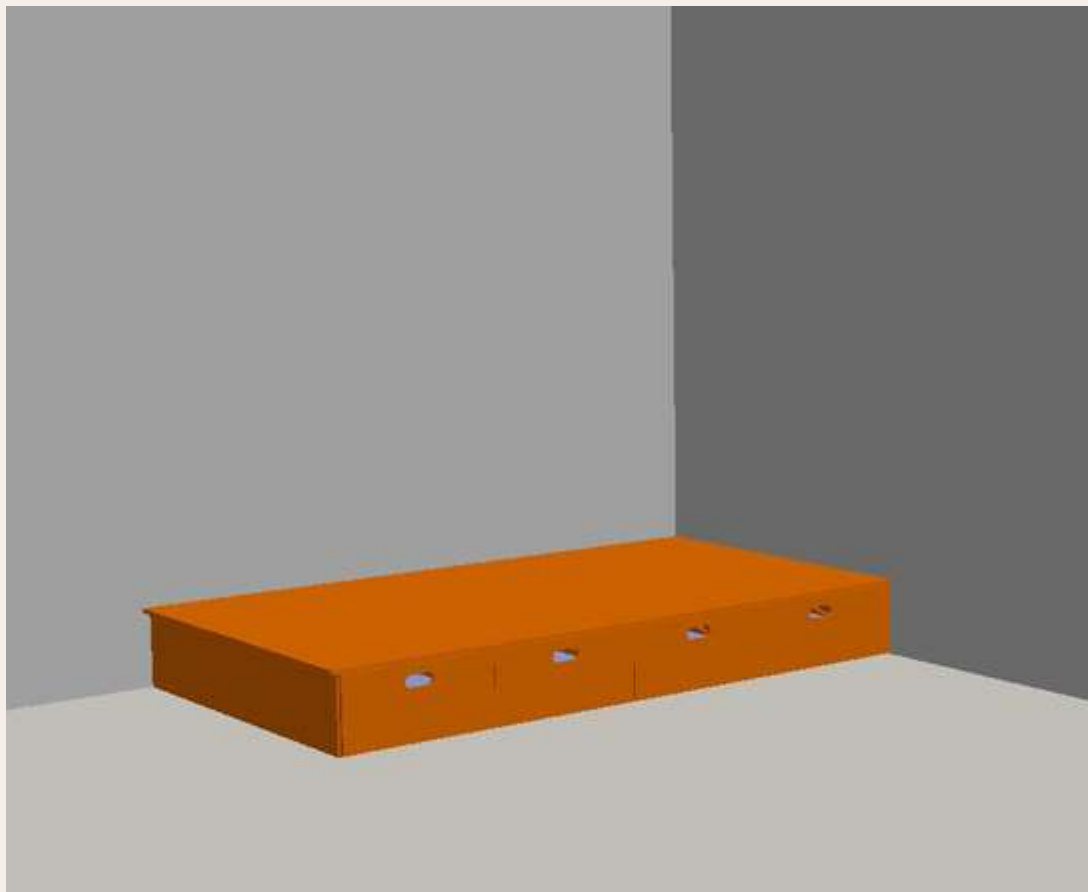
RESEARCH



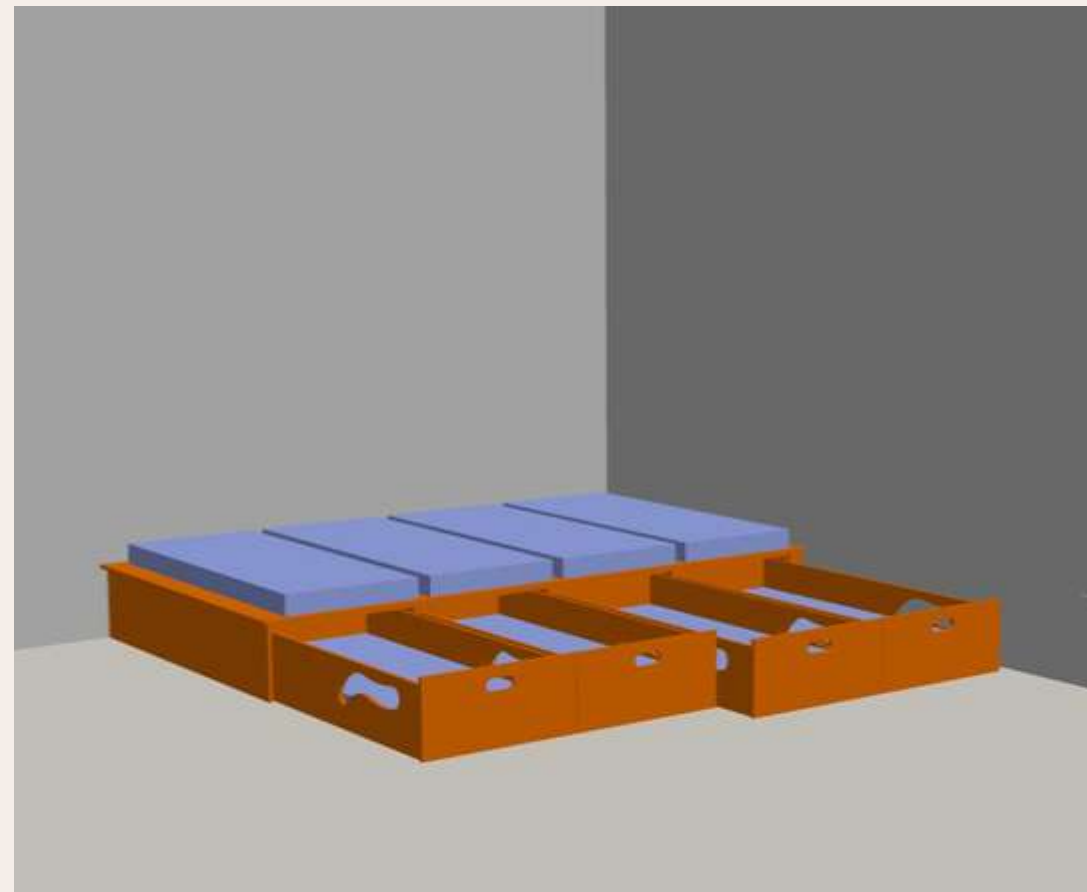
# ADVANTAGES OF OUR PRODUCTS

11

Our products are modular systems!



Step 1



Step 2



Step 3 ... and so on!

# ADVANTAGES OF OUR PRODUCTS

Our products are very easy to install!

12

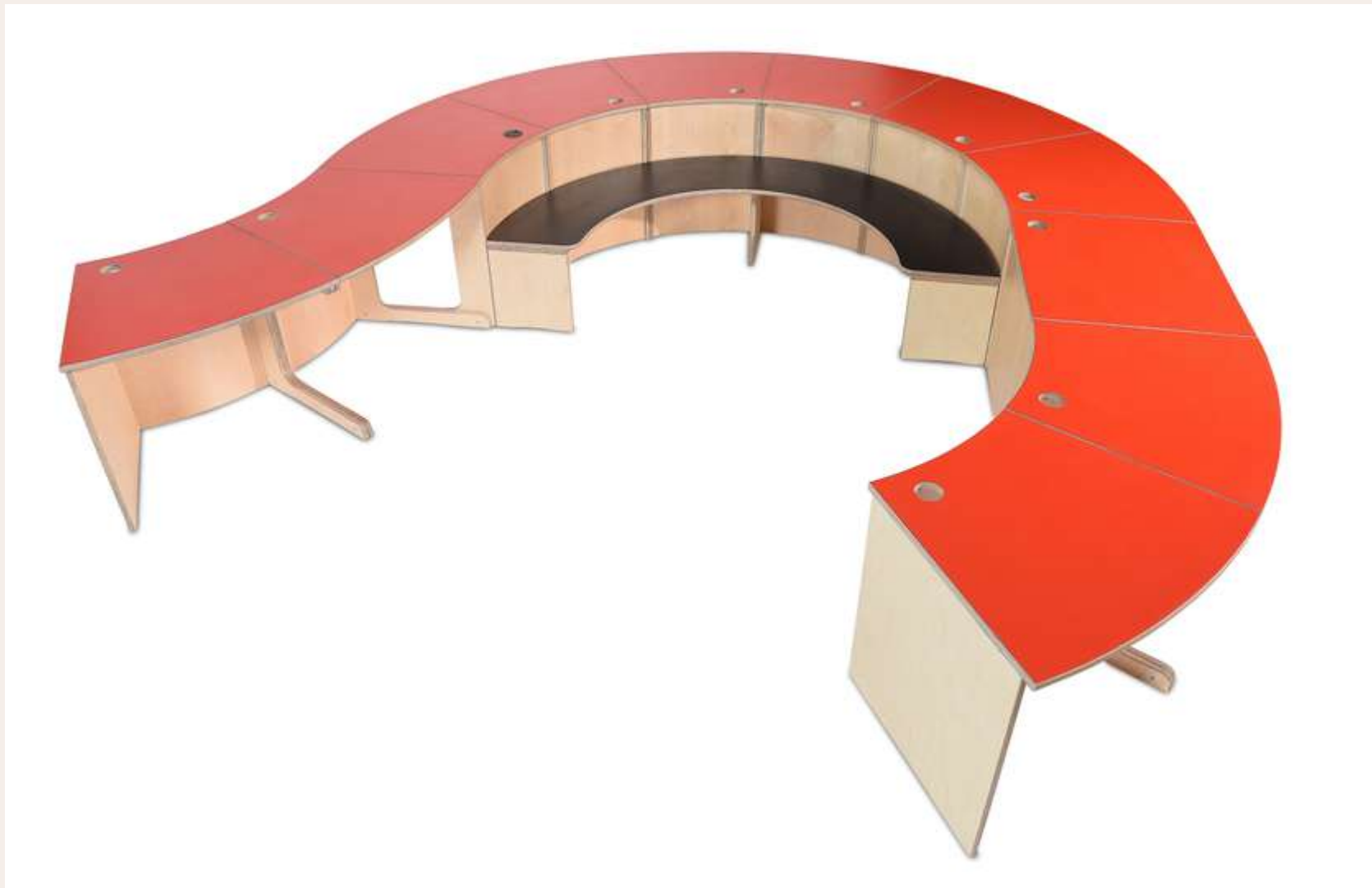




# ADVANTAGES OF OUR PRODUCTS

13

Our products are durable  
and moisture resistant!



# WHAT WE ARE LOOKING FOR ...

14

## PRINCIPAL

Owners of kindergartens, schools looking for facilities with a high design value and a feel-good climate.

## PARTNER COMPANY

Carpenter for transport and assembly on site.

## SALES PARTNERS

Sales partner or architect who distributes our concept.



# THANK YOU VERY MUCH

15



**DESIGN-KINDERMOEBEL**

We thank you very much  
for your attention.

Sincerely, Claudia Seeger

Visit our homepage  
[www.design-kindermoebel.de](http://www.design-kindermoebel.de)



**YOURS CARPENTER THALER**

We thank you very much  
for your attention.

Sincerely, Matthias Thaler

Visit our homepage  
[www.ihrschreinerthaler.de](http://www.ihrschreinerthaler.de)