



embeddeers GmbH

WHO WE ARE

embeddeers GmbH – Company Profile

- Founded 2007 in Berlin, Germany
- Head office in Berlin with 45 employees
- Automotive experts for embedded systems / software / hardware Engineering
- Development team with average
 - 13 yrs automotive systems & software experience
 - 18 yrs embedded systems experience
- A Total of 400+ man-years of automotive customer project experience
- Cooperation with AVIN System (India) regarding various AUTOSAR tasks



CORE PROFESSION

- Electronic Control Units
- Functional Safety
- System Engineering
- Software Engineering
- Hardware Engineering
- Test / Validation
- eMobility

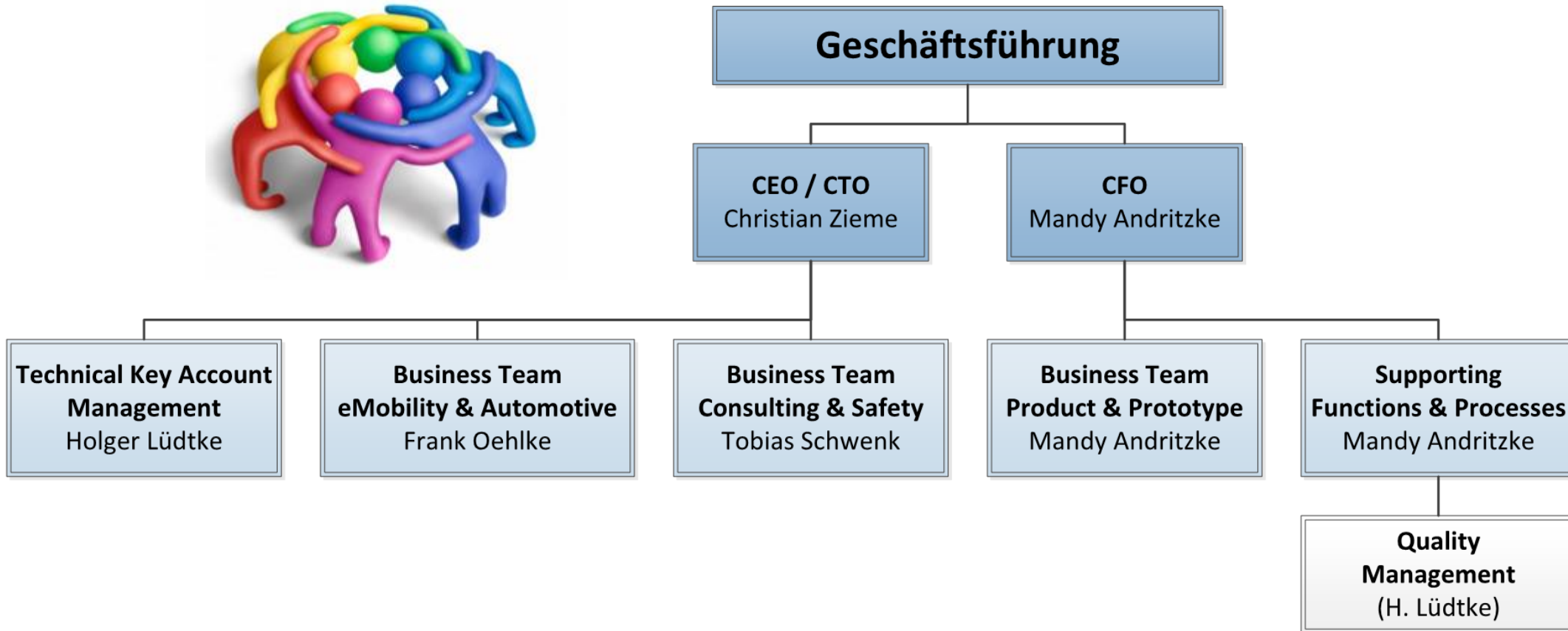
SPECIALS

- All V-Model Services
- Generic IP Base
- Basic AUTOSAR Stack
- Development Web-Portal
- Laboratories
- Tools and Equipment

PROCESSES

- Automotive SPICE
- Rapid Prototyping

embeddeers - Organisation & Management Team



Our Customers



International Experience



REFERENCE PROJECTS

Reference Projects

Li-Ion-Battery Projects:

- Battery Management System
- Battery Management Controller
- Cell Management Controller
- Battery Disconnect Unit
- Battery Core
- Functional Safety

Power Electronics:

- Hybrid Drive
- Drive Unit with DC/DC
- Electric Motor Control
- Microhybrid
- On-Board Charger
- Functional Safety

Certification Projects:

- Standardization / TÜV

Reference Projects

AUTOMOTIVE ECUs

- Body Controllers
- Safety Controllers (Truck & Car)
- Birdview / Topview
- Interior and Exterior Light
- Heating / Ventilation / AC

INDUSTRY 4.0

- Connectivity Devices
- Crane Drive Units
- Bluetooth Crane Control
- Telematics Module
- Energy Harvesting
- Electronic ePaper Label

embeddeers IP

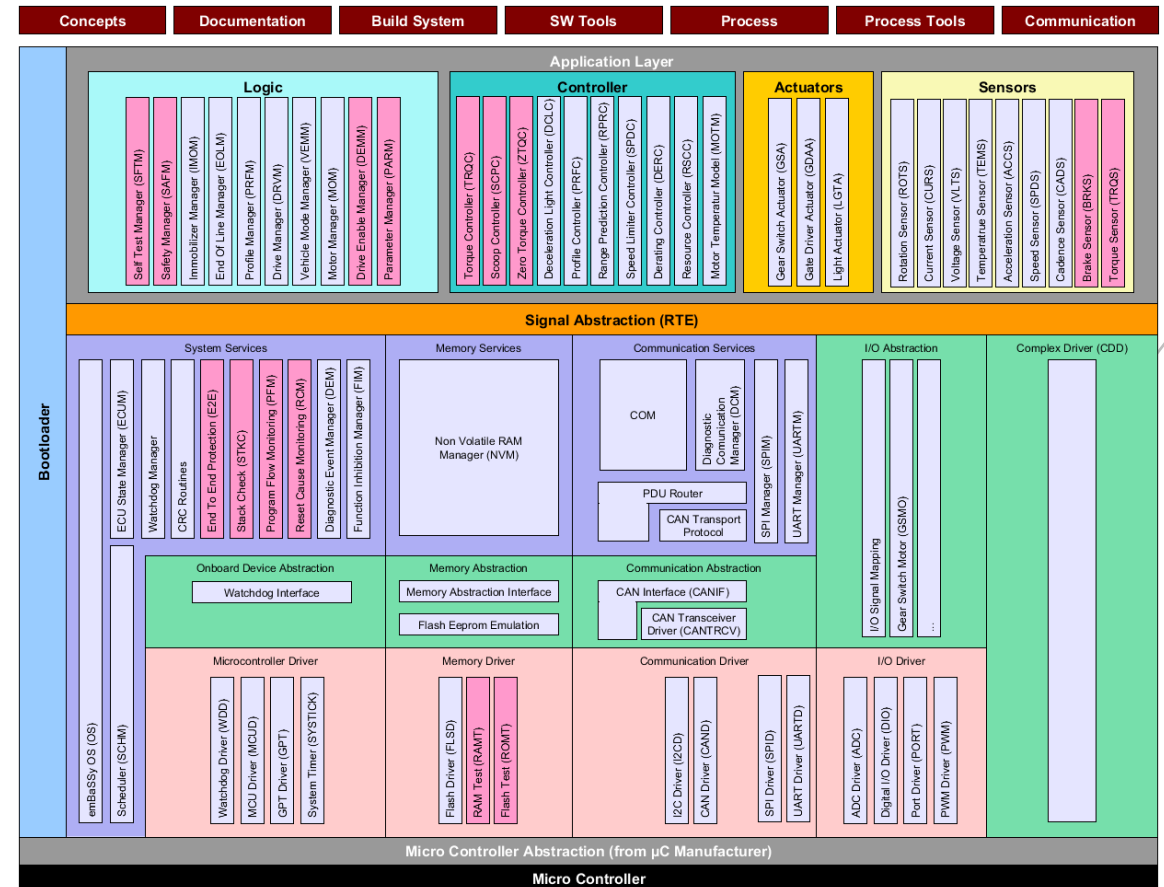
AUTOSAR-like Software Stack (emBaSSy)

Basic Software (BSW)

- AUTOSAR-like modules und interfaces
- Low resources usage
- Mature and in production
- Free from 3rd party rights
- Generator for CAN, RTE, DEM, NvM, ...
- Contains safety modules (ASIL/SIL)
- Integrated into Eclipse IDE
- Capable up to ASIL C
- No costs

Purpose

- Rapid-prototyping
- Series production



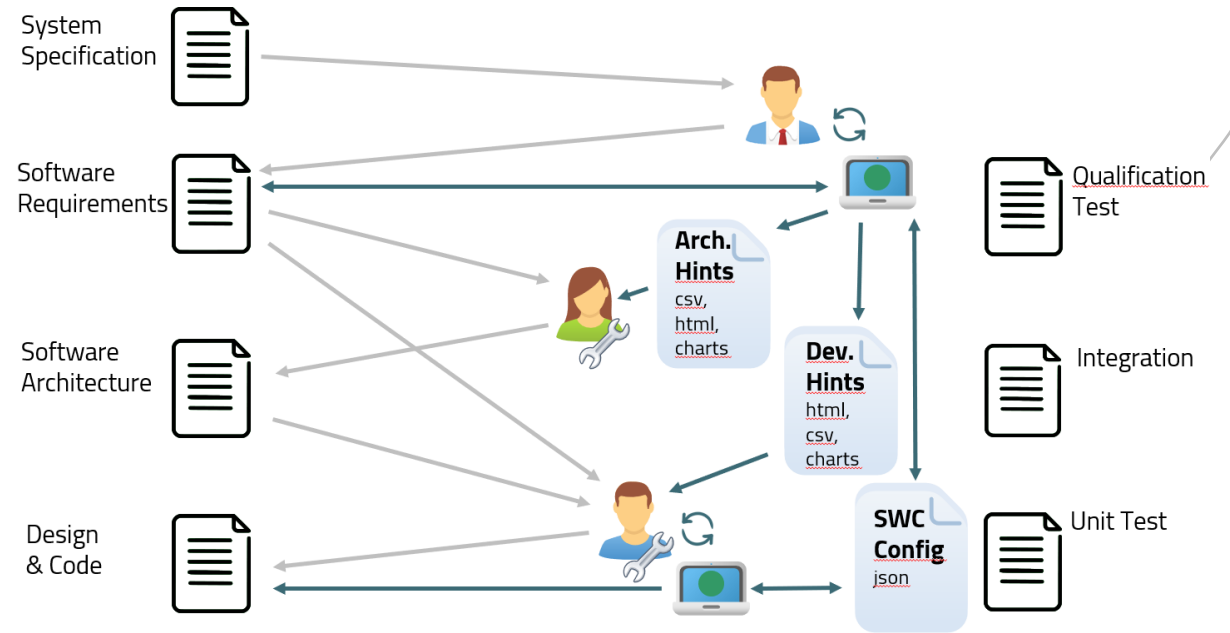
Application Design Tooling with Code Generation

Features

- SW Requirements engineering
- SW Architecture
- SW Component Development
- Real State Machine Design
- Testcase development
- Compatible with external tools (i.e. Matlab)
- Generates C/C++/Java Code, Charts, Design, Requirments

Advantages

- Reduces Application costs up to 1/20
- Reduces Development Time up to 1/10
- Increases Quality
- Increases Maintainability



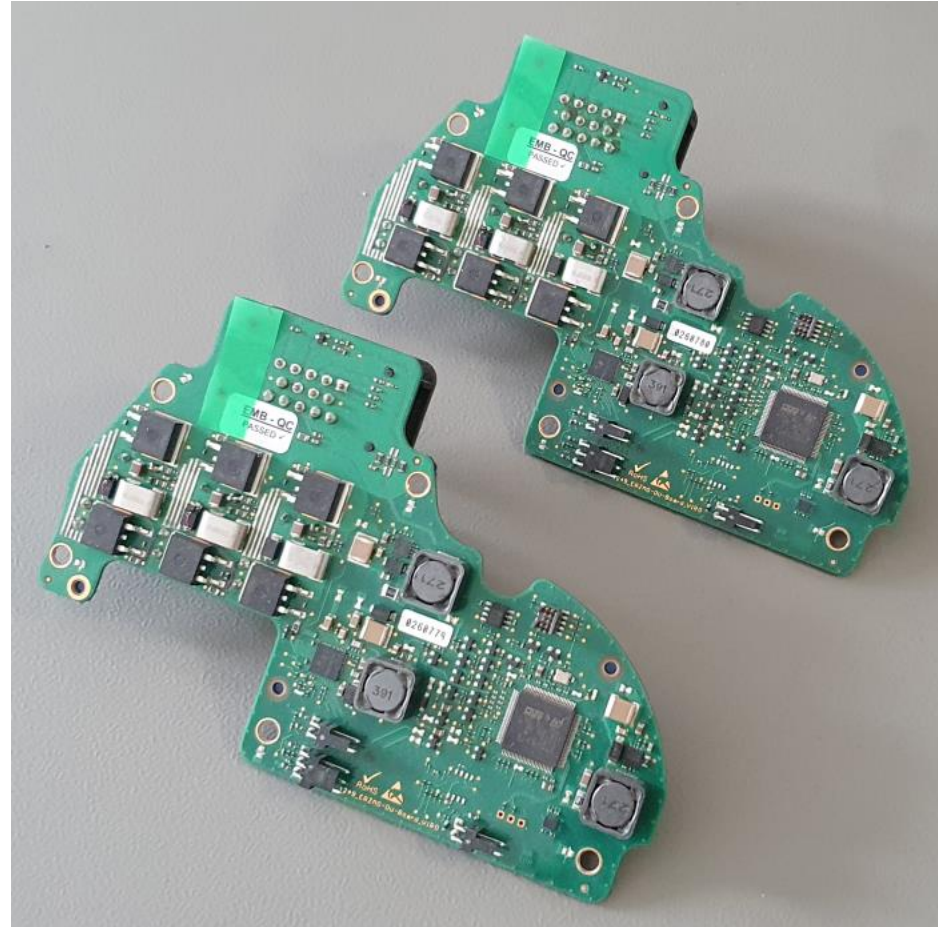
eMobility Electronics and Software

Features

- BLDC Power Electronics (48V)
- Battery Management Systems
- eBike Controllers (HMI)
- BLDC Motor Control (FOC)
- ARM based
- Mature and in Production
- For LEVs / eBikes / Cranes
- ASIL / SIL capable

Advantages

- No 3rd Party Licenses
- Easy to be modified



AT YOUR SERVICE

CONTACT

Christian Zieme

CEO / CTO

+49 (0)30 2000 580 21

+49 (0)173 847 04 60

christian.zieme@embeddeers.com

Frank Oehlke

Automotive

+49 (0)30 2000 580 39

+49 (0)172 457 61 84

frank.oehlke@embeddeers.com

Mandy Andritzke

CEO / CFO

+49 (0)30 2000 580 68

mandy.andritzke@embeddeers.com

Tobias Schwenk

Consulting & Safety

+49 (0)30 2000 580 66

tobias.schwenk@embeddeers.com