

**Üdvözljük Önöket!**  
*Herzlich Willkommen*



# Introduction of Paul Maschinenfabrik

on the occasion of the event of the  
German-Hungarian Chamber of Foreign Trade

Speaker:  
**Michael Gülich**  
Sales Director

Division:  
**Prestressed Concrete Technology**  
Heavy-Lifting Technology  
Woodworking Technology



## History & Today:

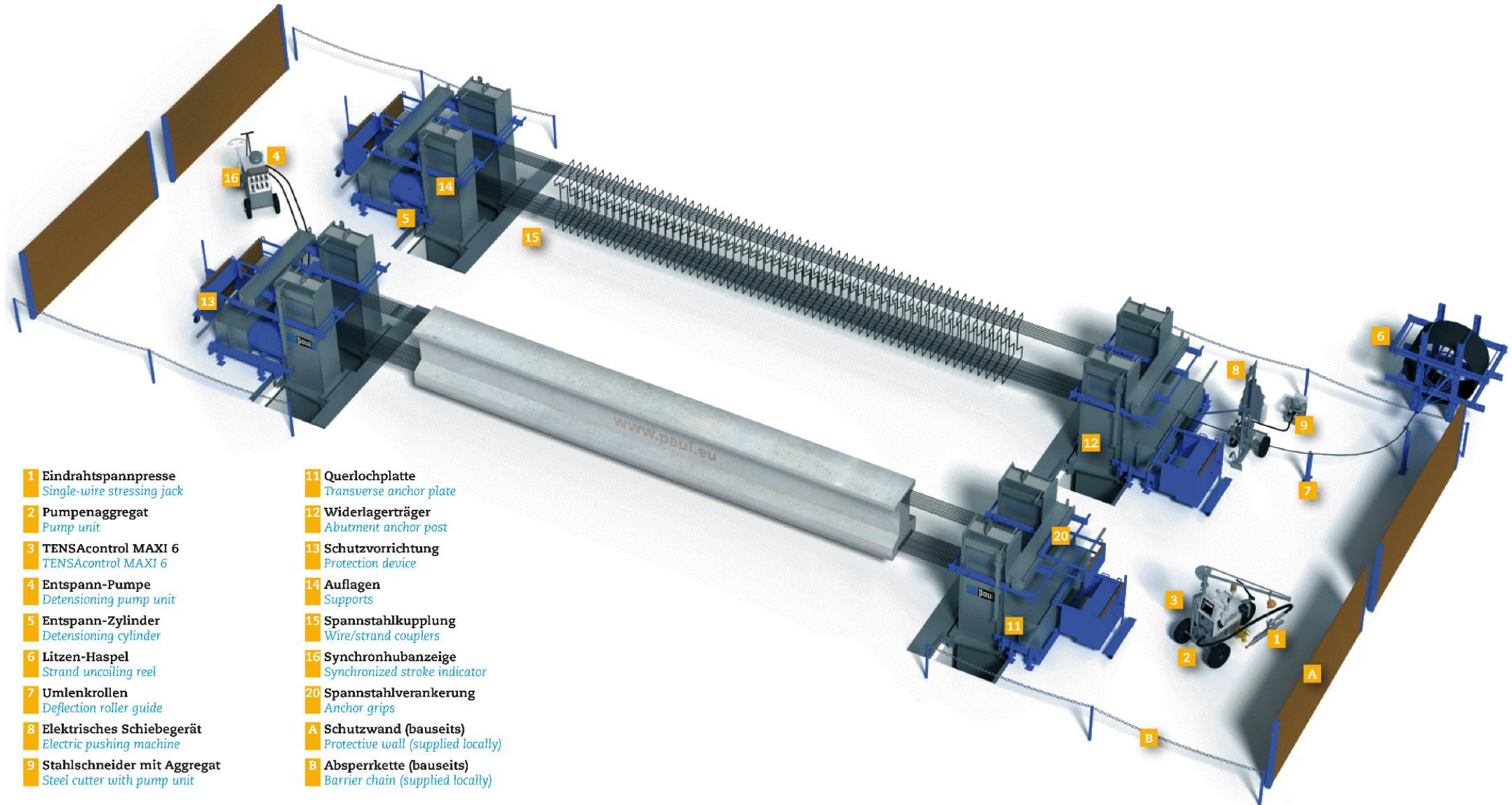
- 1925: Max Paul installed a mechanical workshop and there he began the production of special machines for whips
- 1948: After WW2, his sons Bertold and Odilo developed 1948 the first double edging circular saw
- 1954: Paul developed the first stressing equipments & accessories
- 1959: the first jack with revolutionary 2-button operation was build
- 1975: factory extended to Riedlingen, total staff approx. 180
- 1990s: machines where more and more automated, first version of TENSACONTROL
- 2000: headquarters and production moves from the city center to the new location in Dürmentingen industrial area
- 2010: new hall in Dürmentingen, total covered production are 37,000m<sup>2</sup>
- 2012: third division heavy-lifting technology was established as sister division to prestressed concrete technology
- 2014: Paul woodworking division takes over company Reinhardt in Rottweil
- 2016: commissioning of self-developed and build full automatic long-storage system in Riedlingen
- **Paul in 2022:**
  - 3 locations: Dürmentingen, Riedlingen, Rottweil
  - 280 employees, 40 trainees
  - Covered production are: 37,000m<sup>2</sup>
  - Total area: 120,000m<sup>2</sup>
  - Export rate approx. 80-85%
  - family owned company







**Prestressing of precast concrete elements**



**1 Eindrahtspannpresse**  
Single-wire stressing jack

**2 Pumpenaggregat**  
Pump unit

**3 TENSACONTROL MAXI 6**  
TENSACONTROL MAXI 6

**4 Entspann-Pumpe**  
Detensioning pump unit

**5 Entspann-Zylinder**  
Detensioning cylinder

**6 Litzen-Haspel**  
Strand uncoiling reel

**7 Umlenkrollen**  
Deflection roller guide

**8 Elektrisches Schiebegerät**  
Electric pushing machine

**9 Stahlschneider mit Aggregat**  
Steel cutter with pump unit

**11 Querlochplatte**  
Transverse anchor plate

**12 Widerlagerträger**  
Abutment anchor post

**13 Schutzvorrichtung**  
Protection device

**14 Auflagen**  
Supports

**15 Spannstrahlkupplung**  
Wire/strand couplers

**16 Synchronhubanzeige**  
Synchronized stroke indicator

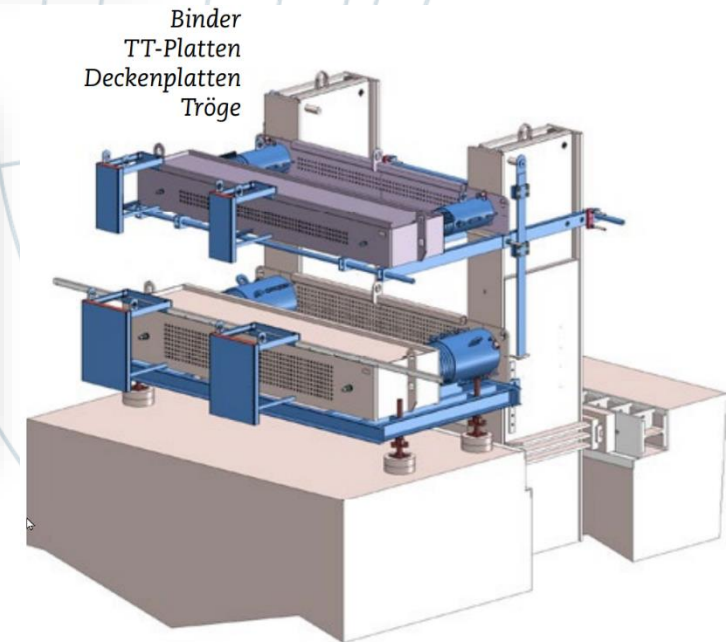
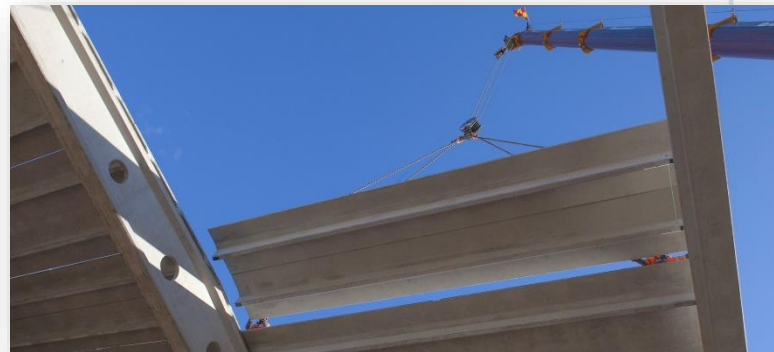
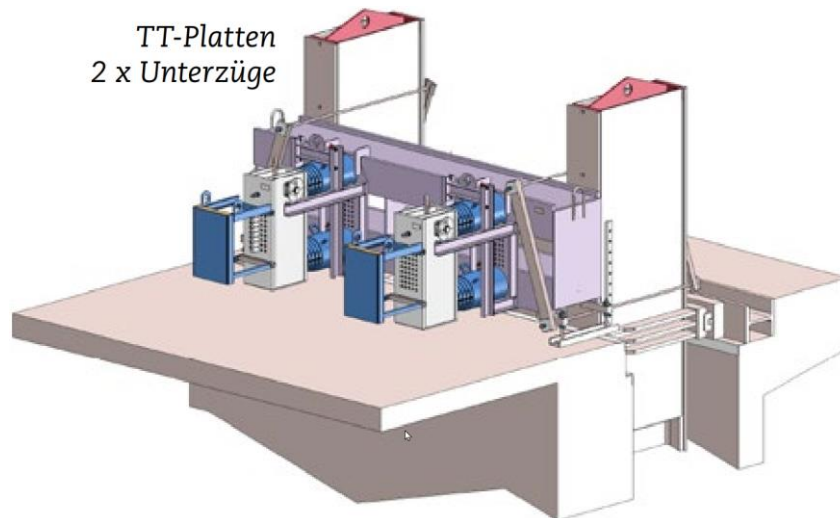
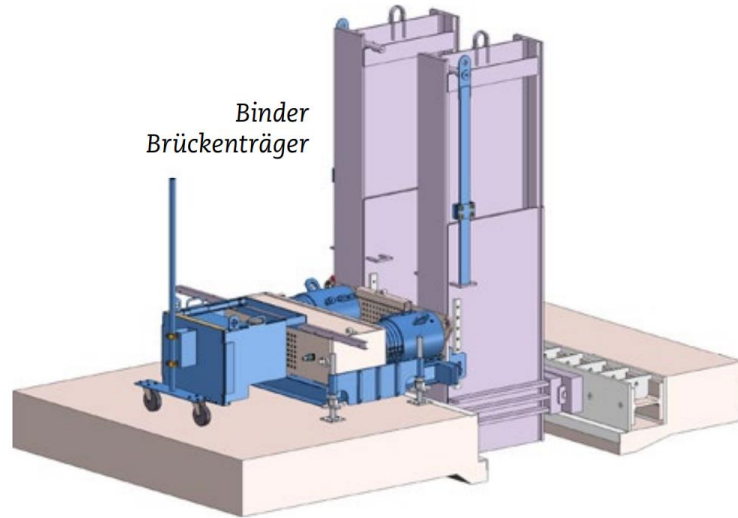
**20 Spannstrahlverankerung**  
Anchor grips

**A Schutzwand (bauseits)**  
Protective wall (supplied locally)

**B Absperrkette (bauseits)**  
Barrier chain (supplied locally)

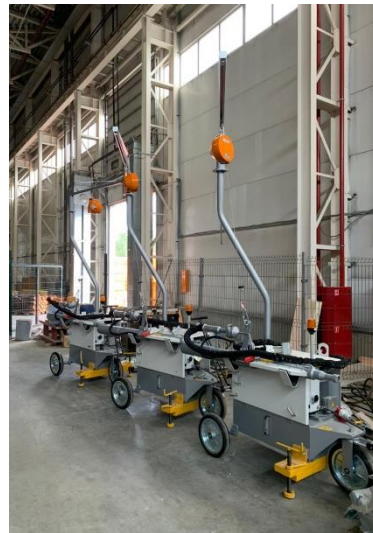
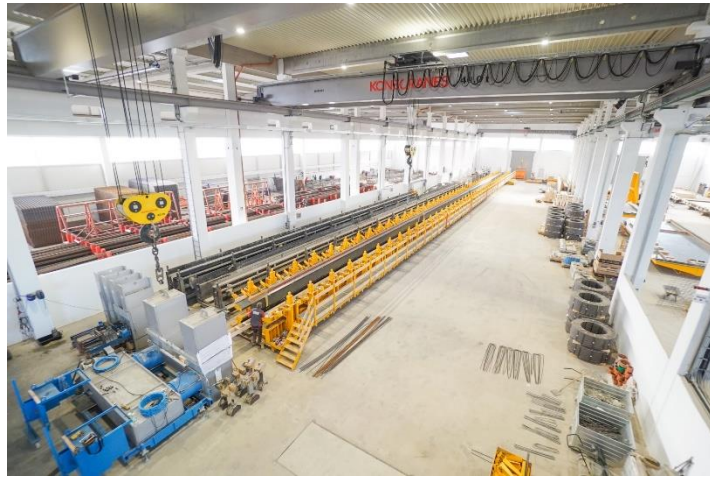


# Stressing beds for all kinds of prestressed elements

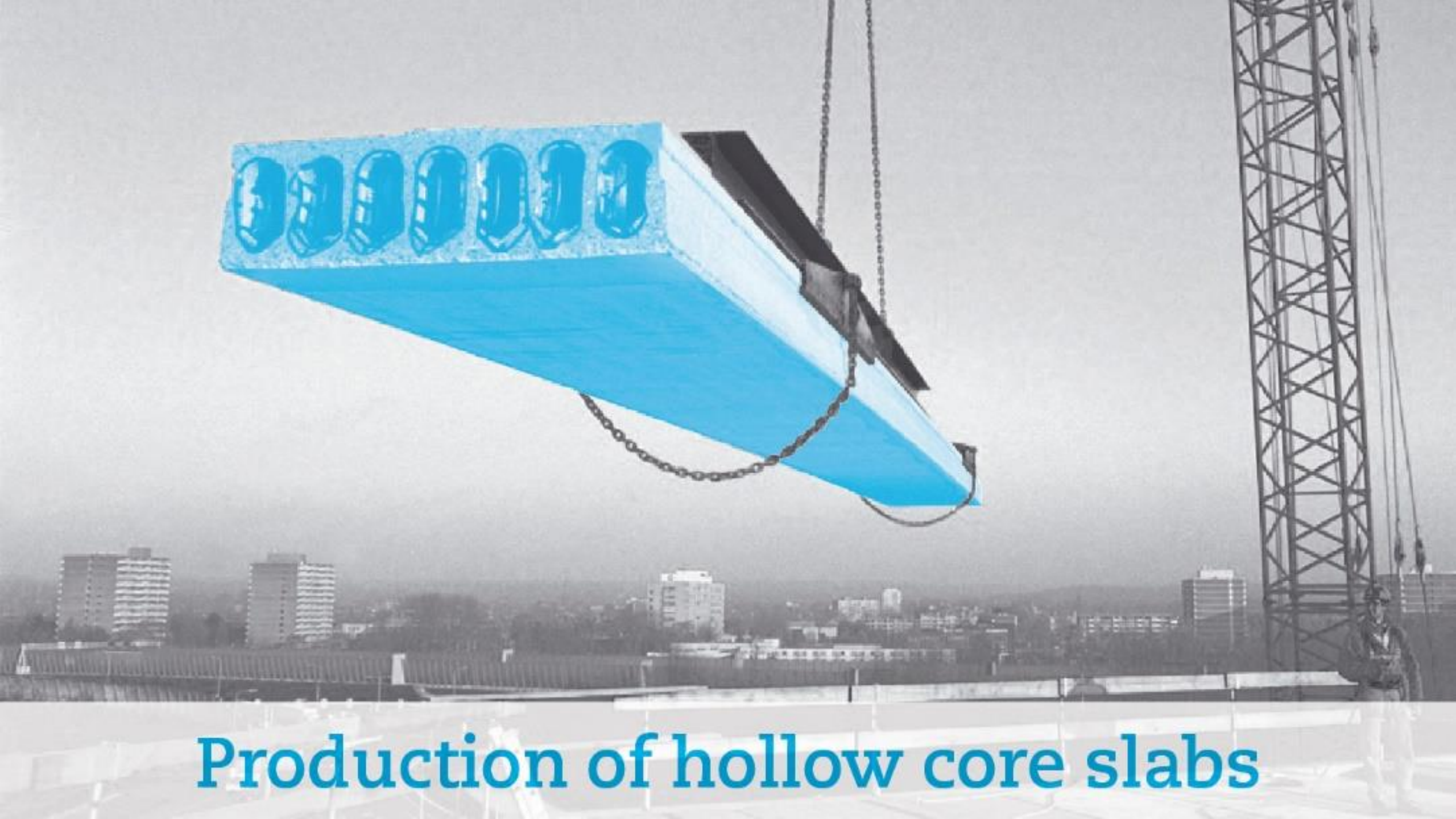




## Stressing beds for all kinds of prestressed elements







**Production of hollow core slabs**



## Stressing solutions for hollow core slabs







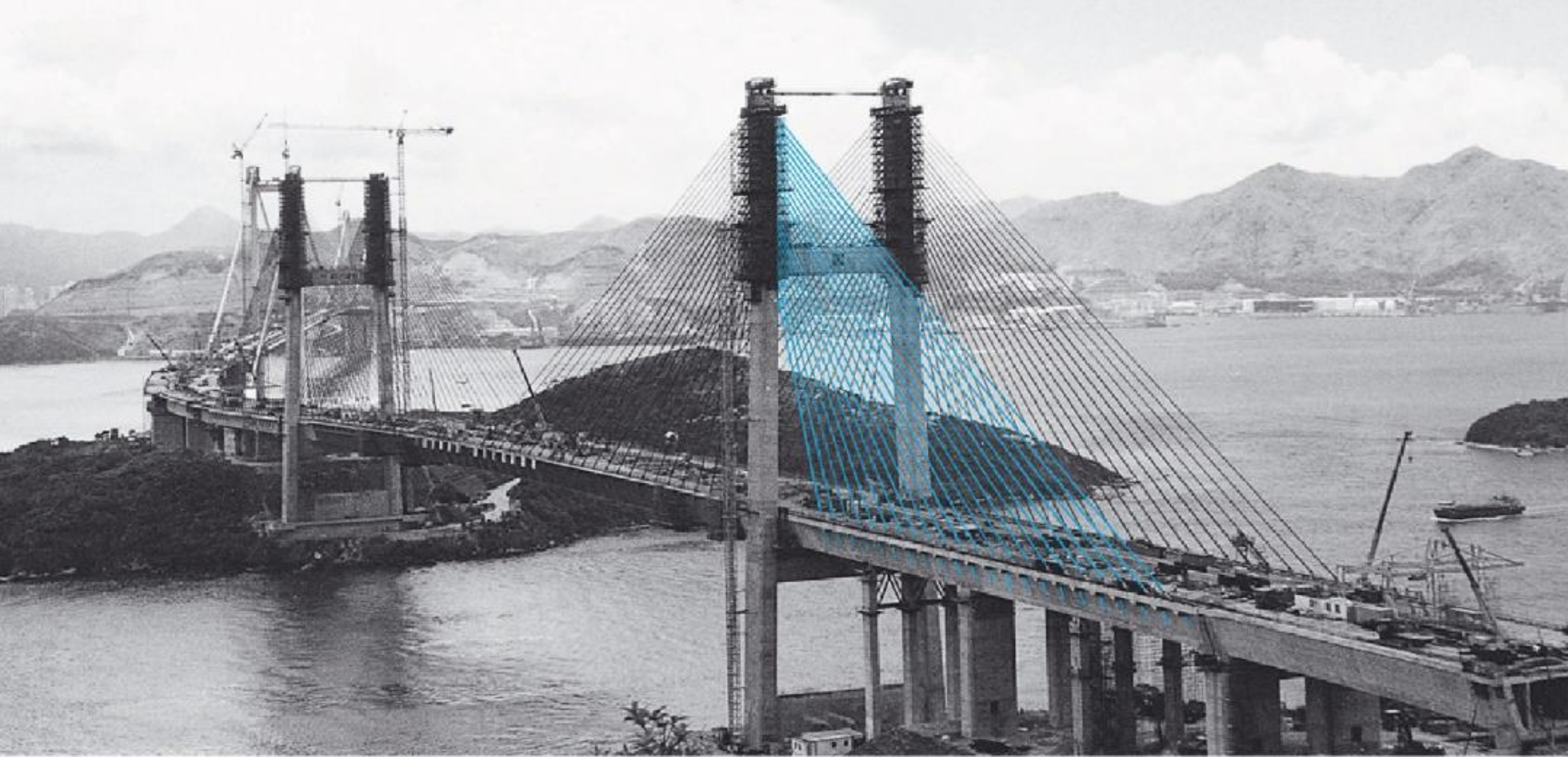
Sleeper production



# Manufacturing of Prestressed Concrete Sleepers



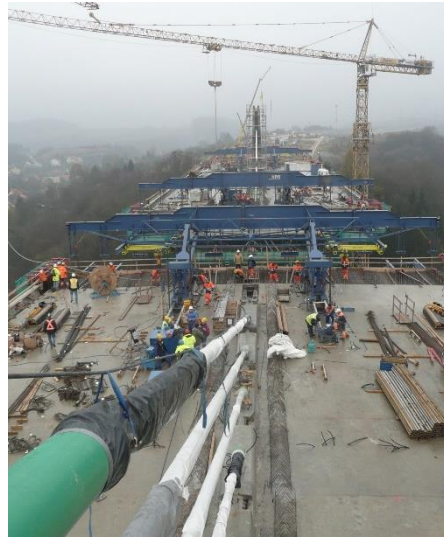




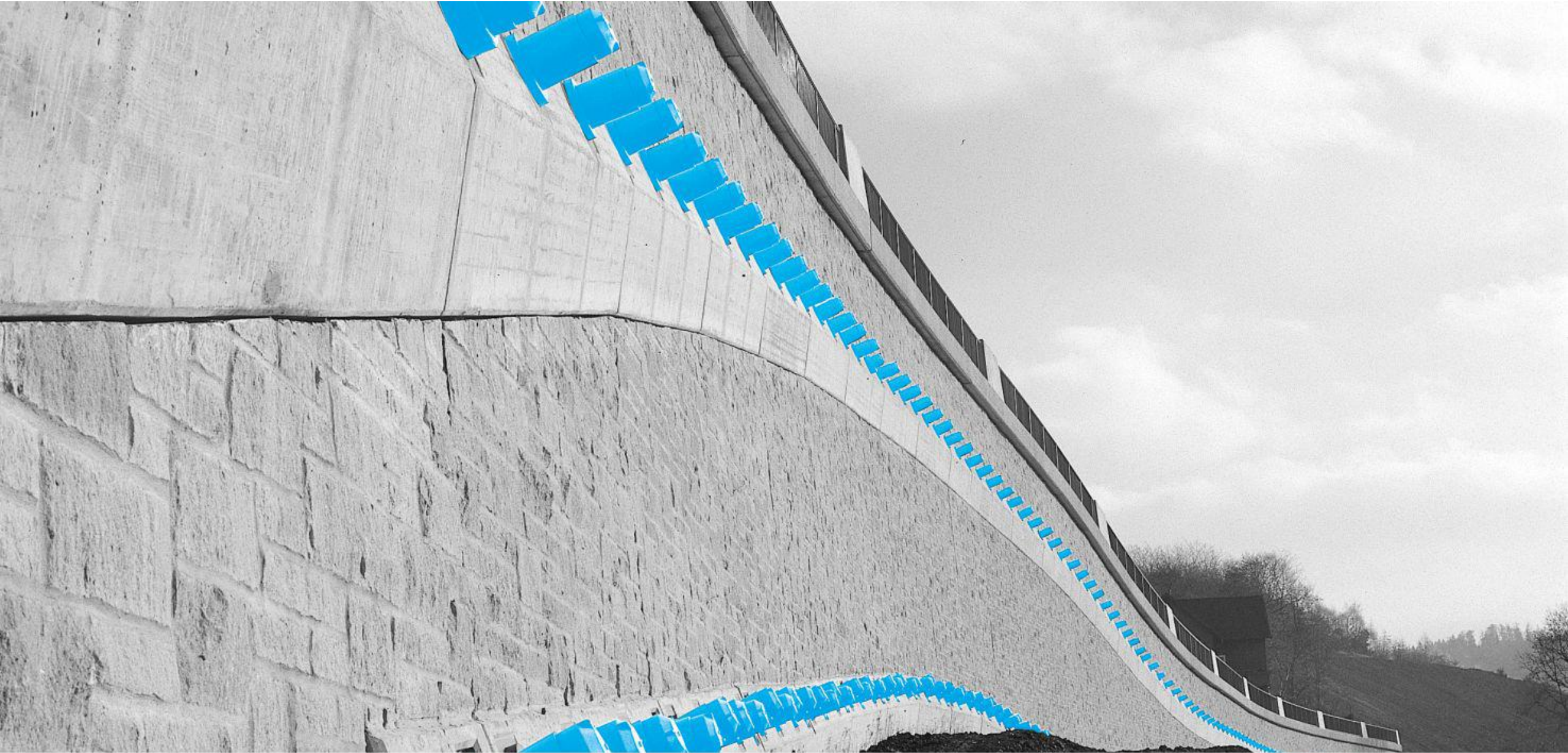
Stressing of stay cables



# Pushing and Stressing of Bridges and Stay Cables







# Stressing of Ground Anchors



# Manufacturing and Stressing of Ground Anchors







**Stressing of towers and poles**



## Anchor manufacturing and Stressing of Wind-Towers





## Summary

### Prestressing in the Factory

- on Stressing beds for beams, TT-slabs, flat slabs, lintles,...
- for Hollowcore Slabs
- for concrete sleepers
- for poles

### Post-Tensioning on site

- for bridges
- for stay cables
- for ground-anchors
- for wind-towers

Your partner for:

Single wire stressing, multi stressing, button heading, pushing / cutting, anchor manufacturing,...





**Vielen Dank für Ihre Aufmerksamkeit!**  
*Thank you for your attention!*



**Paul Maschinenfabrik GmbH & Co. KG**  
Prestressed Concrete Technology  
Max-Paul-Str. 1  
88525 Duermentingen  
Germany

Tel: +49 7371 500 0  
Fax: +49 7371 500 111  
Mail: [stressing@paul.eu](mailto:stressing@paul.eu)  
Web: [stressing.paul.eu](http://stressing.paul.eu)  
YouTube: [stressing-channel.paul.eu](http://stressing-channel.paul.eu)