

CITIES WITH A FUTURE

REHABILITATE
TO REVITALIZE
OUR CITIES

Abel Mascarenhas

President of the Executive Board of EG IFRRU 2020

XXII Simpósio Luso-Alemão de Energia

Lisboa, 20 de outubro de 2020



REPÚBLICA
PORTUGUESA

INFRAESTRUTURAS
E HABITAÇÃO



instrumento financeiro
reabilitação e revitalização urbanas

Cofinanciado por:



UNIÃO EUROPEIA
Fundos Europeus
Estruturais e de Investimento



Entidades gestoras:



Implementation of IFRRU 2020



Implementation of IFRRU 2020

251

financing
contracts

724 M€

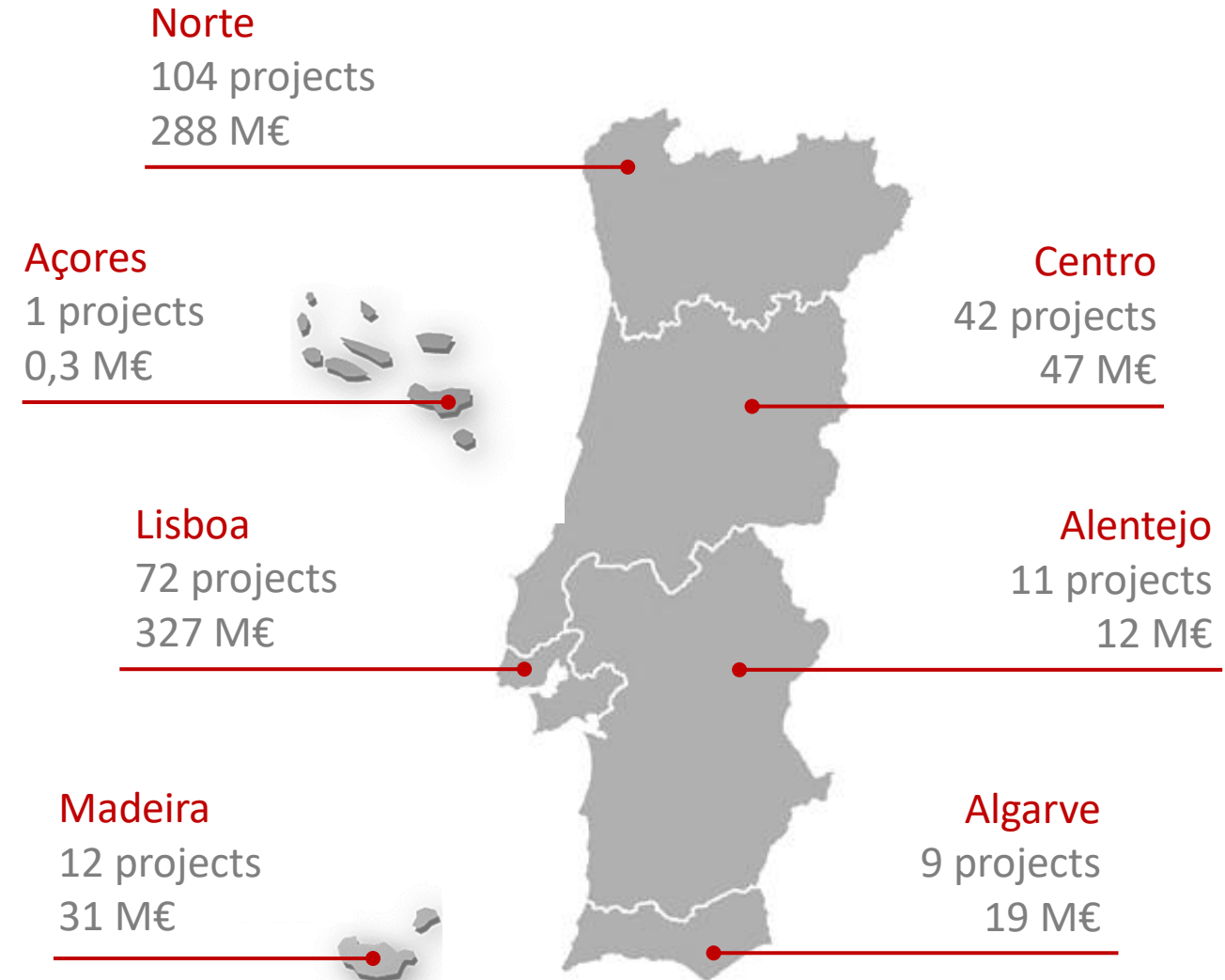
contracted
investment

515

applications

1.326 M€

potential
investment



74 cities with projects ongoing
1650 opinions issued by 145 municipalities



Castelo Branco
Vila Real de Santo António
Alcochete
Bragança
Loures
Batalha
Peso da Régua
Vouzela
Proença-a-Nova
Moita
Funchal
Mirandela
Loulé
Albergaria-a-Velha
Silves
Águeda
Elvas
Beja
Braga
Viana do Castelo
Abrantes
Leiria
Porto
Mangualde
Lagos
Anadia
Évora
Câmara de Lobos
Matosinhos
Santarém
Barcelos
Santo Tirso
Amarante
Maфра
Condeixa-a-Nova
Sintra
Faro
Cascais
Coimbra
Guimarães
Vila Real
Oeiras
Vila Nova de Gaia
Oliveira de Azeméis
Vila Franca de Xira
Aveiro
Póvoa de Varzim
Figueira da Foz
Ponte de Sôr
Lisboa
Trofa
Vila Viçosa
Santiago do Cacém
Setúbal
Marvão
Cantanhede
Paços de Ferreira
Ferreira do Zêzere
Barreiro
Viseu
Moimenta da Beira
Lousã
Gouveia
Soure
Penamacor
Santa Maria da Feira
Pombal
Boticas
Alenquer
São João da Madeira
Ponta Delgada
Odemira
Castro Branco

Entities supported

189 enterprises

38 natural persons

13 public entities

11 social associations or similar

Use of the building

107 housing

130 economic activities

14 public and social equipment



IFRRU 2020

instrumento financeiro
reabilitação e revitalização urbanas

Contracted projects untill june 2020:



1.133

renovated households



346.427 m²

renovated public or
comercial buildings



Contracted projects untill june 2020:



1.790

new residents



3.474

jobs





Contracted projects untill june 2020:



29.152 toe

primary energy
consumption reduction



13.866 ton CO2 equiv

greenhouse gas
emissions reduction

What is IFRRU 2020 ?



What is IFRRU 2020 ?

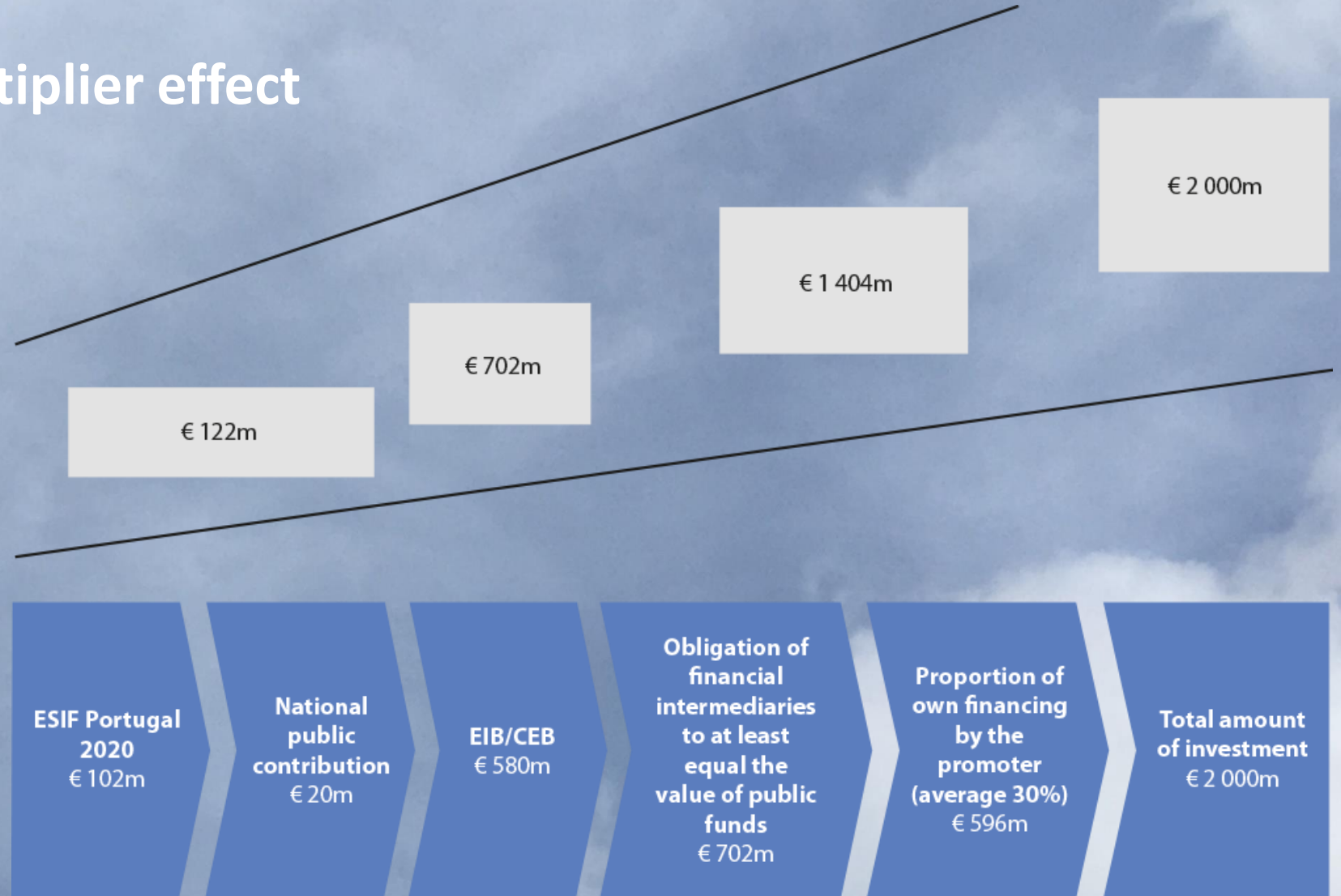
IFRRU 2020 (Financial Instrument for Urban Regenerations and Revitalization) is a financial instrument aimed to support in more favourable conditions investments in urban renewal, that covers the entire Portuguese territory.

A single application for funding is required both for building renewal and for energy efficiency. The application shall be submitted to the selected banks through their commercial network at any time, that is, without prior application periods and without a limit to the number of applications per candidate.



What is IFRRU 2020 ?

Multiplier effect



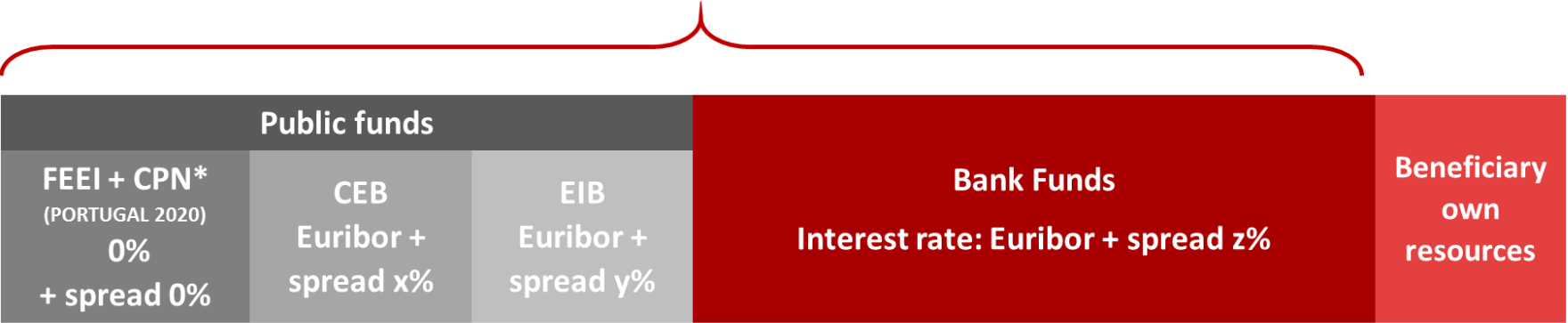
What is IFRRU 2020 ?

Better financing conditions result from **combining public funds** (European funds from PORTUGAL 2020, EIB - European Investment Bank and the Development Bank and CEB - Council of Europe Development Bank) with **private funds from commercial banks**, selected specifically for this program.

1.400 million €

IFRRU 2020 loan composition:

Global interest rate:
reduced comparing to the one applied for market loans to similar projects



* CPN = national public contribution, from the State Budget

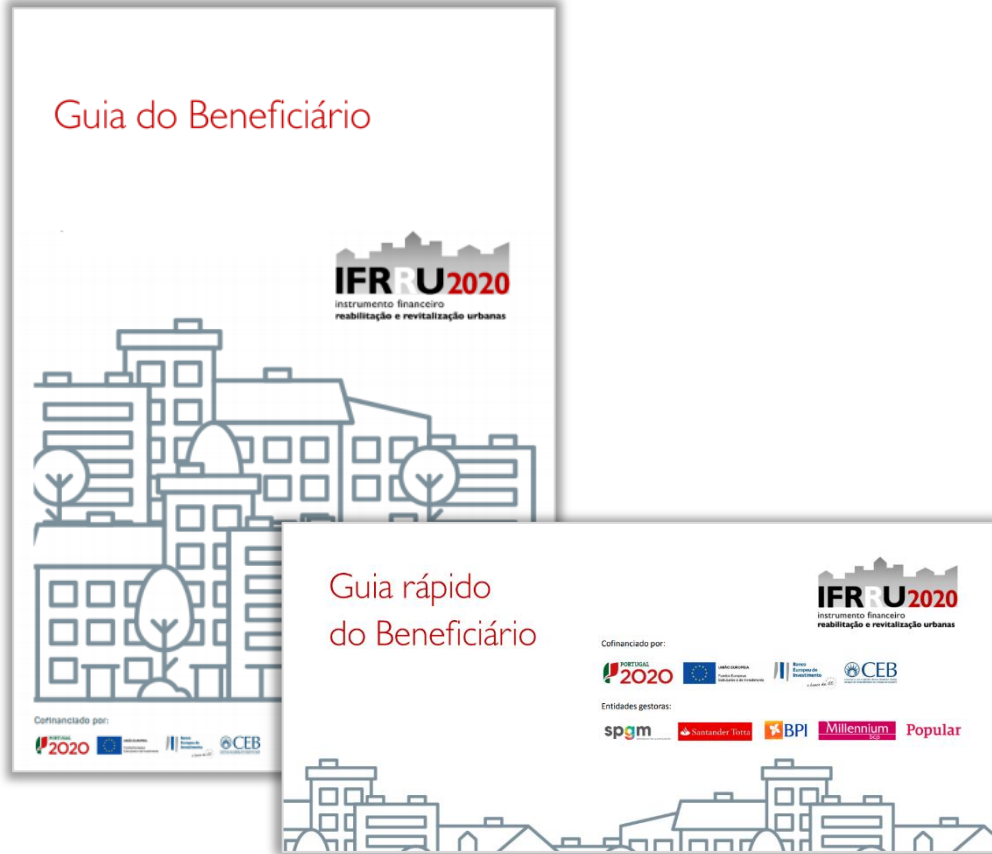
At least 50% of the loan

Can be required or not, depending on the needs/project/candidate



What is IFRRU 2020 ?

Main documents:



Contents in English:

Webpage

<https://ifrru.ihru.pt/web/guest/home-en1>

Brochure

[https://ifrru.ihru.pt/documents/20126/35997/Folheto IFRRU2020 Ingl es.pdf/e5ea5011-c22d-5cbe-11d5-1931596fa36e?t=1556286108745](https://ifrru.ihru.pt/documents/20126/35997/Folheto_IFRRU2020_Ingl_es.pdf/e5ea5011-c22d-5cbe-11d5-1931596fa36e?t=1556286108745)

Video

<https://youtu.be/g4bEcsE6FWI>

Types of support



Types of support

More details:

Chapter 2 Guia do Beneficiário (PT)

Loans

> **Composition**

máx 50% public funds + min 50% funds from the Bank

> **Interest rates**

below market prices - value depending on the combination of the various sources of financing

> **Maturity**

Up to 20 years

> **Grace period**

Investment period + 6 months (máx. 4 years)

> **Financing coverage**

up to 100% of the investment, depending on the financing needs and the risk analysis by the Bank

> **Guarantees**

those required by the Bank, consisting mainly the mortgage of the property to rehabilitate



Application process



Application Process

More details:

Chapter 4 Guia do Beneficiário (PT)

3 STEPS

Easy access for citizens

- > Simplified procedures
- > Support through a helpdesk (email and phone)

More details:

<https://ifrru.ihru.pt/web/guest/applications-en> (EN)

Who

URBAN AUTHORITY
FOCAL POINT

AGENCY FOR ENERGY
(ADENE)

FINANCIAL
INTERMEDIARIES

What

BINDING OPINION OF THE MUNICIPALITY

Focal point confirms that the project fits into the strategy defined for the territory

Over 300 municipalities involved

ENERGY CERTIFICATION

Identifies the appropriate EE measures for the project

Qualified experts

ANALYSIS AND DECISION OF APPLICATION FOR FUNDING

Loans for all final recipients or guarantees (for enterprises)

Banks

Application Process

More details:

Chapter 4 Guia do Beneficiário (PT)

When?

Applications can be submitted to the selected banks through their commercial network at any time, that is, without prior application periods.

Who can apply?

Any entity, whether natural or collective person, public or private, with a title that gives her the power to carry out the intervention.



Information and easy
access for citizens



Information and easy access for citizens

Communication strategy

- > Over **100 awareness raising sessions** - including in the outermost regions of Azores and Madeira
- > Reaching out to the **main actors of the sector**: national associations of engineers, technical engineers, architects and ADENE – close to the experts that do the energy certification
- > Promotion through **major events** of the sector: Urban Rehabilitation Weeks, Real Estate Exhibitions
- > **International promotion** – Protocol with AICEP + spreading information close to the consulates, the Embassies and the Portuguese emigrant support offices in each Municipality.



Information and easy access for citizens

Communication strategy (cont.)

- > Dedicated **Website** including comprehensive information
- > **Guidance** and **Short Guide** for final recipients - online
- > Promotional **videos** which summarise the opportunity that IFRRU 2020 is for potential beneficiaries, including testimonials of promoters
- > **Leaflets**
- > A periodic **Newsletter** sent to all stakeholders
- > **YouTube channel** and **LinkedIn** account with regular updates.
- > Creation of webpages, brochures and videos in **different languages** – English, Spanish and French

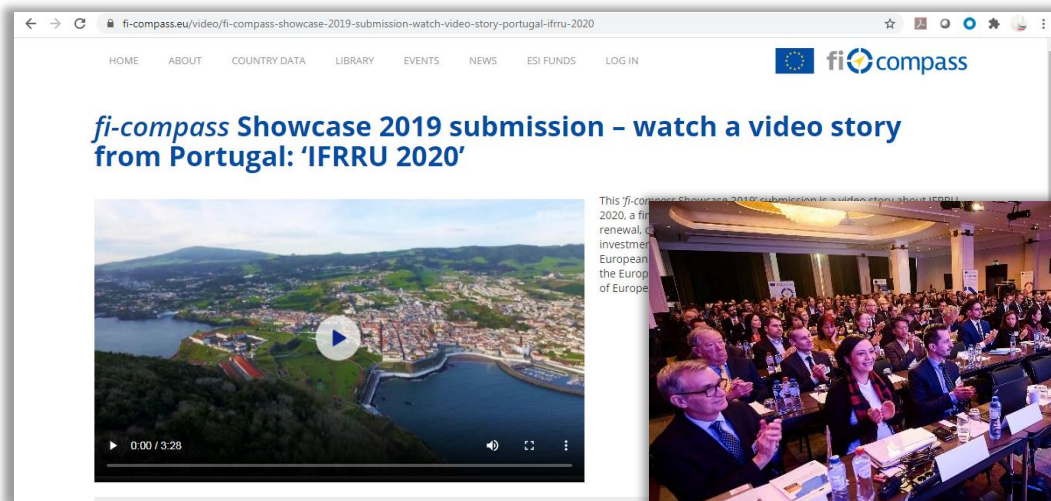
In addition, the **financial intermediaries** have developed their own marketing campaigns integrated within the promotion of their conventional business.



<https://ifrru.ihru.pt/web/guest/home-en1>

Information and easy access for citizens

- > Considered as a case study by the European Commission and European Development Bank (EIB) – fi-compass platform
- > Visits to 3 projects supported by IFRRU 2020
- > Online wide information - <https://www.fi-compass.eu/>
- > Presentation at Fi-campus 2019, Brussels



Thank you for your attention

ifrru@ifrru.ihru.pt



CITIES WITH A FUTURE

REHABILITATE
TO REVITALIZE
OUR CITIES



REPÚBLICA
PORTUGUESA

INFRAESTRUTURAS
E HABITAÇÃO



instrumento financeiro
reabilitação e revitalização urbanas

Cofinanciado por:



Entidades gestoras:

