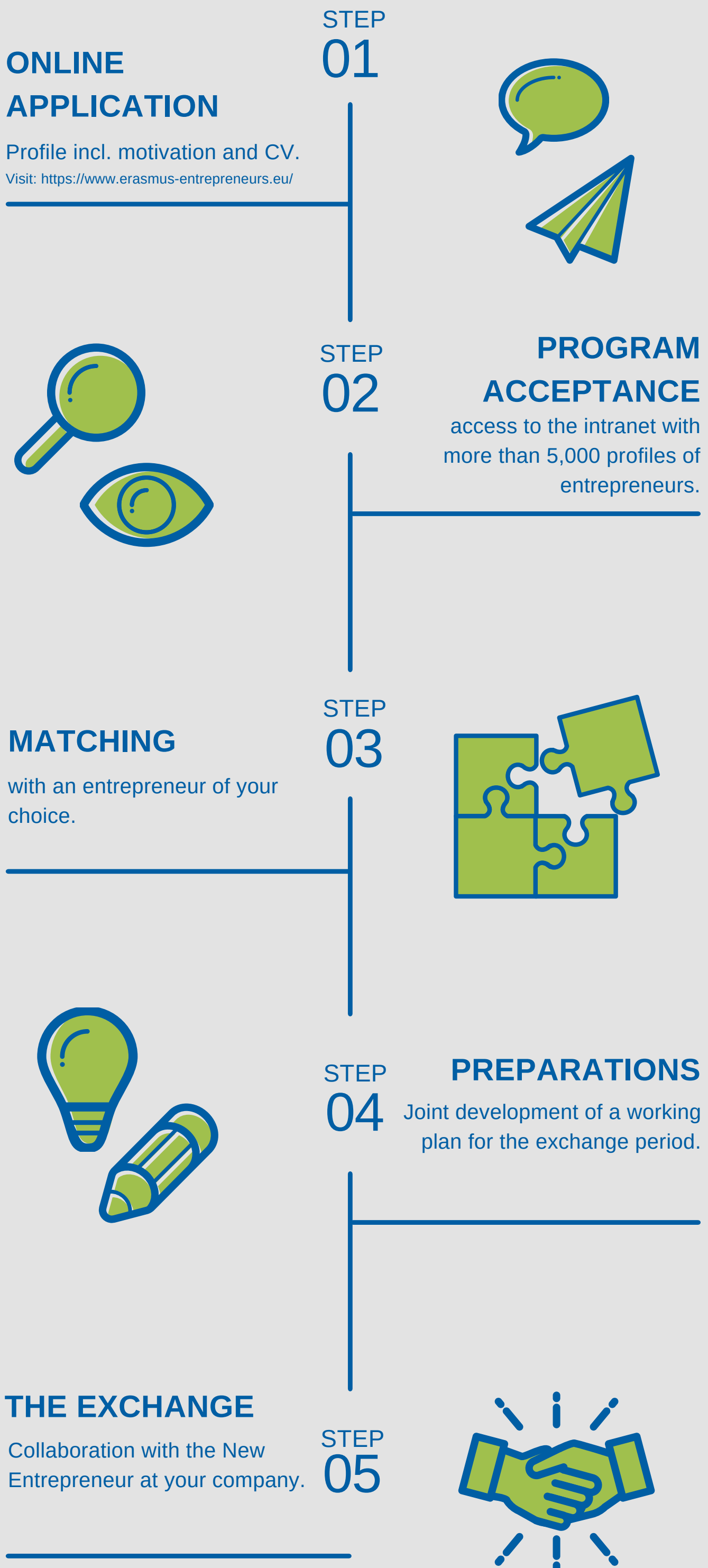


Program Guide and Application for Host Entrepreneurs



Erasmus for Young Entrepreneurs Global



THE PROGRAM IN DETAIL

ONCE YOUR PROFILE IS ACCEPTED

1

You can start to actively search for a match and propose up to 5 exchanges.

2

In conversation you find synergies and define the scope of collaboration. If both entrepreneurs accept, you enter the commitment phase.

3

Your Intermediary Organisation will help you collect input and draft the joint activity plan.

COMMITMENT

The commitment defines the collaboration between two entrepreneurs. It is the instrument to implement the exchange and measure its success. The commitment reflects an equal relationship and a win-win cooperation. It is specific to the relationship between two individuals.



Once the commitment is ready, it is uploaded for your review and approval.



The Intermediary Organisations will perform a last check before all documentation is reviewed by the European Commission for final validation of the exchange.

RELATIONSHIP EXECUTION FLOW

1

Introduction training for the New Entrepreneur (VISA, financial assistance).

2

Start and end dates of the exchange are confirmed with you.

3

New Entrepreneur travels to destination for the exchange to take place.

4

You actively collaborate with the New Entrepreneur and share your business experience.

FLEXIBLE SOLUTIONS: COMBINE REMOTE & PHYSICAL EXCHANGES



TIME FOR FEEDBACK

At the end of the exchange, both entrepreneurs will be asked for feedback. Time for your assessment of the collaboration.

YOUR EXCHANGE IS COMPLETED



Stay in touch with the EYE Global Program, become part of the Alumni Network or host again.