

“Smart Battery Management System (BMS)
electronics and embedded software solutions”

For Smarter batteries



Who we are

Profile

Name: Batkon
 Foundation: 2011
 Co. Type: R&D
 Parent-co : AIM Energy Inc.
 Within: ITU Technopark



R&D Projects and Product Development

2013 - 48V Lithium Battery System
 2014 - EV Battery Management System
 2016 - Nuclear Reactor Control System
 2018 – Telco Battery Management System
 2019 – i-Pack Portable Energy Storage System
 2020 – Megatron Large Scale Lithium BESS
 2021 - IoT Supported Wireless Sensor Platform
 2022 - Modular Lithium Battery Mng. System



Activities

Designing Battery Management Systems
 Modernization of ITU Nuclear Research Reactor Systems (2014)
 Raising up the Battery Technology Department
 Restructuring as an R&D innovation company
 Founding a new company called BATKON (2017)
 Ever upgrading our products and increasing the numbers
 Producing joint projects with the leader foundations
 Receiving project incentives from TÜBİTAK and KOSGEB
 Receiving investment from RHEA venture-capital which is quoted on BIST (2021)

Management Team



Türker ŞAHİN

Co-Founder, CIO

İTÜ Physics Eng. B.Sc. and
Energy Eng. M.Sc. Graduated
Yapı Kredi Bank, Yapı Kredi Insurance,
Erdemsoft etc.
Embedded and Cloud Software Designer
25+ years



İlker AYDIN

Founder, CEO

İTÜ Electronics M.Sc. Graduated
Professional background: Nortel
Networks, Ericsson, Gen-Pa
32+ years engineering experience.
Technology Entrepreneur since 2000
eVoIP, Ericom, AIM Energy and BATKON



Aydın TUNALI

CTO

İTÜ Electronics B.Sc. Graduated
Beko R&D, AIM Energy
Professional background.
Hardware Designer 35+ years



Tolga KÖKTUNA

CCO

Anadolu Univ. Economics Graduate



Akın GÜNDÜZ

Partner

Market Requirement

Problems

**Reliable and scalable
Lithium Battery Management**

Micro Mobility

**Telecom & UPS
Industry**

Monitoring for VRLA Batteries

VRLA (Lead Acid) monitoring system to protect them and alert before a battery fault

**Integrated and scalable
Battery Energy Storage
BESS for kWh to MWh**

**Large Scale
Energy Storage**

**Remote
Management**

IoT Cloud Platform

Several type of sensors located telecom sites, data centers, Industrial facilities and we need a remote monitoring and management software platform located at cloud



Batkon Solutions

Solutions

BMSLion : Modular/scalable
Lithium BMS

LiCh :Smart Lithium Charger

MEGATRON is containerized BESS;

LAR-24 : Lithium battery + Rectifier
DC UPS for Electricity Distribution
Transformer Sites

Micro Mobility

Telecom & UPS
Industry



Small to Large
Scale Energy
Storage

Remote
Management

wBIS :Wireless Battery Inspection
System for VRLA batteries

Telco BMS : VRLA Battery
management Telecom Base station
sites

ReMon : IoT Cloud software
platform

Batkon Product Portfolio

Click to product for more information on web



Megatron

Large Scale Lithium BESS



BMSLion

Modular Lithium Battery Manager (BMS)



Telco BMS

Telecom VRLA Battery Manager



wBIS

Telecom & UPS VRLA Battery Inspector



LAR-24

Smart 24V DC UPS for Electricity Distribution Transformer Sites



LiCh

Smart Lithium Battery Charger



i-Pack

Portable Energy Storage



BattLion

Telecom & UPS Lithium Battery Pack with BMS

History

TRIGA Nuclear Research Reactor
Control System designed



i-Pack



BMSLion



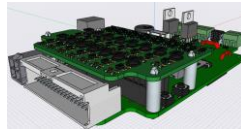
LAR-24



wBIS



Sandy BMS



2011

2014

2016

2017

2018

2019

2020

2021

2022



BattLion



Telco BMS



Megatron



LiCh

Smart BMS like a **Swiss Army Knife**

Batkon's BMS is modular-scalable and connectivity rich solution for various vertical market segments



Robotics AGV/AMR



Large Battery ESS



Telecom Lithium Battery Packs

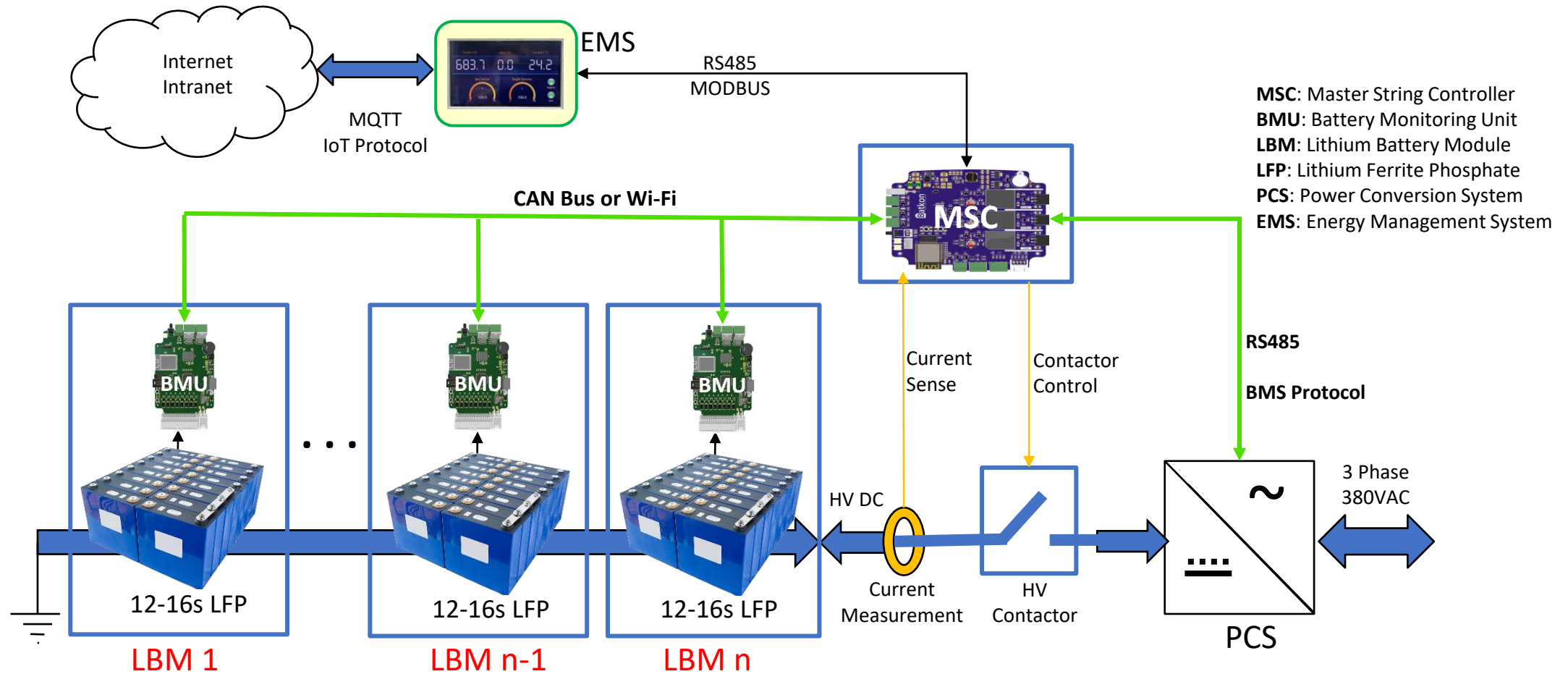


Mini BEV



E-Forklift/Transpalet

MEGATRON Block Diagram



BATKON has critical know-how on modular High Voltage DC lithium battery string management.



LAR-24 24VDC Lithium Battery UPS

- 300W...1000 W AC->DC Power
- 12-24 Ah Lithium Battery
- 7-8s Lithium BMS
- 4.3 inch TFT Touch LCD
- 8 ports Dry-contact Alarm outputs
- Ethernet or Wi-Fi TCP/IP
- Optional RS485 Modbus-RTU



LiCh Smart Lithium Battery Charging System



48/24/12VDC adjustable Lithium battery pack

1-3 kW power charger.

Charger «talks» to Lithium BMS and coordinates charging regime

- **CAN** : CanOpen, SAE J1939, CAN 2.0b
- **RS485** : MODBUS-Serial
- **Wi-Fi** : MODBUS-TCP, MQTT, HTTP/JSON, Embedded WEB

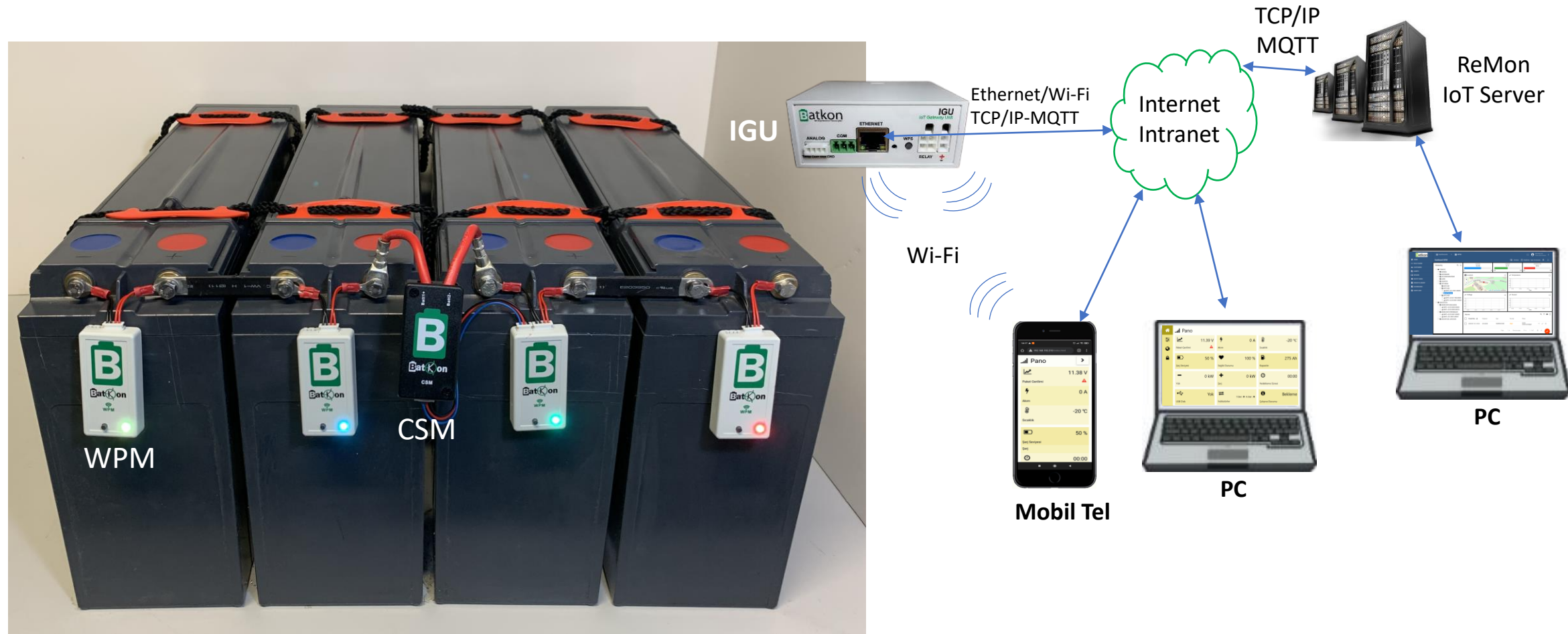
Designed for Forklift/transpalet, AGV/AMR lithium battery packs

i-Pack Portable Emergency Energy Storage System

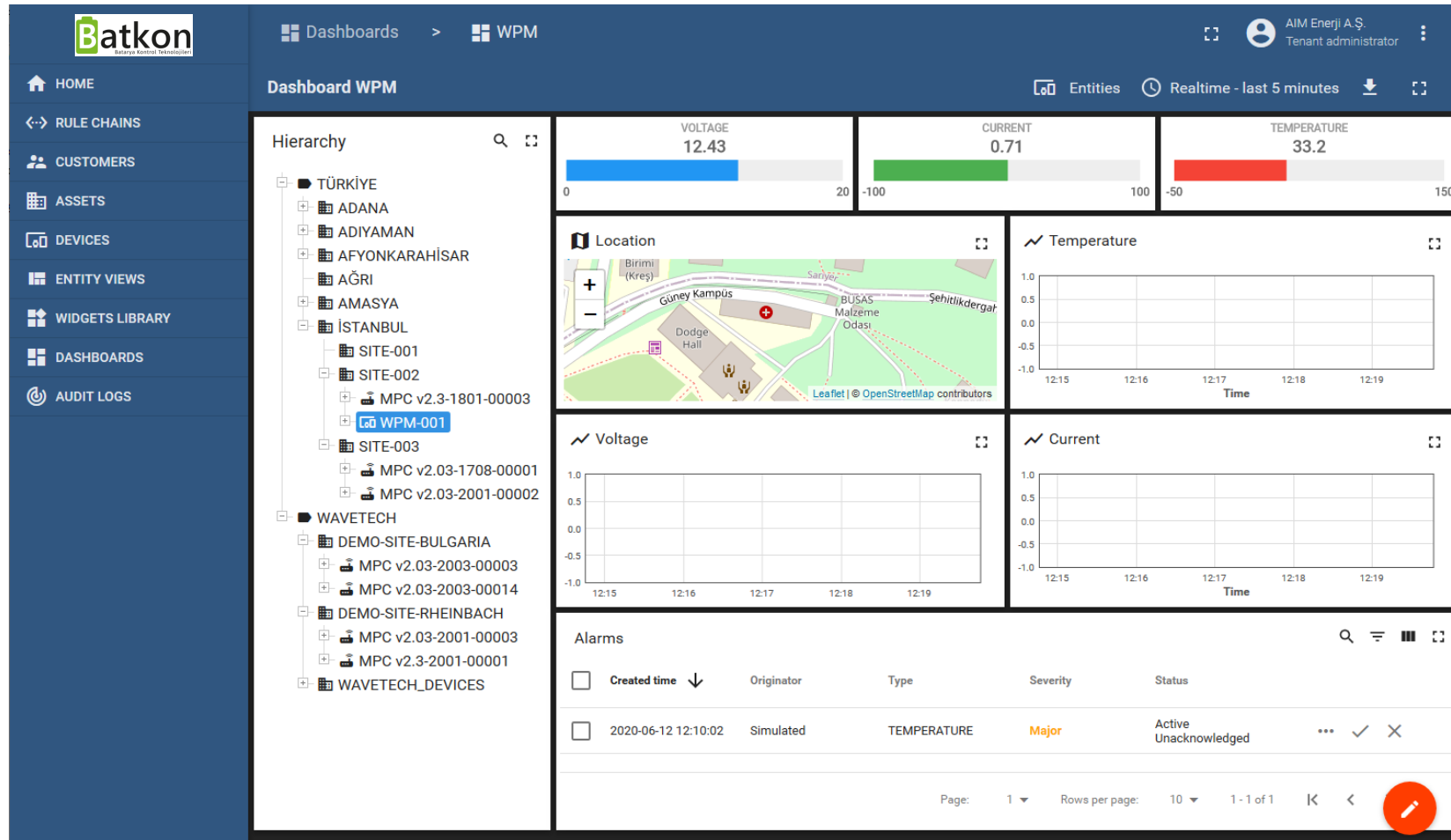


- Quieter and lighter alternative of Diesel Generators
- Lithium battery can be charged at warehouse
- 2 person can carry to emergency site
- i-Pack can supply 230 VAC power for emergency and first-aid equipment
- Different storage and power capacity versions are available compatible with emergency authorities requirement

wBIS Wireless Battery Inspection System



IoT (MQTT) protocol supported Wireless Inspection system for Lead Acid (VRLA) batteries



All BATKON products has IoT suport over TCP/IP networks. **ReMon** software can collect data from devices and evaluate for actions.

Contact



For Smarter Batteries

www.en.batkon.com

BATKON Batarya Kontrol Teknolojileri A.S.

Resitpasa Mah. Katar Cad. Ari-6 Enerji Teknokent No: 2 /49 D:209 Sariyer / Istanbul / Turkiye

Tel: +90 212 286 33 35 **E-mail:** info@batkon.com